

daviesscountyfair.com

2019
Daviess County Lions

FAIR

JULY 10-13

PHILPOT, KENTUCKY



Owensboro Health proudly supports the Daviess County Lions Club Fair!

One of the joys of summertime in Kentucky is getting to enjoy the company of the people you love. That's why Owensboro Health is proud to support one of the best places to spend time with family and friends, the annual Daviess County Lions Club Fair!

The mission of Owensboro Health is to heal the sick and to improve the health of the communities we serve. We want to help you live life to the fullest so you can enjoy the pleasures of summer, including time spent at the county fair. Whether that's through preventive care to keep you healthy, or helping you access providers and specialists who can help you feel better soon, Owensboro Health is proud to offer healthcare in our communities.

If you'd like to know more about Owensboro Health and how we can help make a difference for you and your loved ones, visit OwensboroHealth.org. We hope you enjoy the fair and all the wonderful opportunities of the summer!



OwensboroHealth.org





MARKS MIDWAY

amusements



Sponsored by: Owensboro
Health



DAVIESS COUNTY LIONS CLUB AT WORK

The Daviess County Lions Club donates to many local charities throughout the year. Our primary focus is on eye care for the less fortunate individuals. The Lions Club is a non profit organization that raises funds to support these charitable efforts through special programs throughout the year.

Please check our website for dates for fund raising events or on facebook at [daviesscountylionsclubfair](https://www.daviesscountylionsclubfair.com). Our website is www.daviesscountyfair.com.

*Thank You,
Daviess County Lions Members*



Daviess County Lions Club Fair

CATALOG CONTENTS

2019 Premium List	18-19
4-H & FFA Feeder Calf Exhibition	86
4-H Home Economics and Agriculture	41-63
4-H Open Fun Show	85
4-H Poultry Show	92
4-H Rabbit Show	92
ATV 4-Wheel Mud Bogg	89
Adult Honey Division	17
Baby and Toddler Contests.....	80
Canning Division.....	87
Daviess County Fair Board.....	8
Event Chairmanships	9
Exile Concert	66
Fair Schedule.....	7
FFA Entries	98
Fine Arts & Crafts.....	32
Firefighters Challenge.....	28
Fireworks	83
First Bite Fishing Tanks	40
Gate Admission Prices	5
GCPA Tractors & Mini Rod Pulls.....	95
General Rules	5

Junior Market Lamb, Sheep & Goat Show.....	100
Kentucky Pride Hay Futurity	98
Kentucky State Fair	4
Laser Tag	97
Little Mister & Miss Daviess County	31
Livestock Division.....	77
Miss Daviess County Pageant.....	78
Miss Pre-Teen.....	80
Miss Teen Daviess County.....	79
Monster Trucks	76
Open Beef Cattle Show	88
Open Dairy Cattle Show.....	26
Open Youth Market Swine Show.....	92
Pedal Tractor Pull	91
Petting Zoo	69
Preliminary Talent show	99
President's Message.....	10
Truck and Tractor Pull.....	101
Youth Crop Division	73
Youth Fat Steers Show	88



RIBBONS WON. MEMORIES MADE.

Choose an entry and share your unique talents.
General entries are due July 1; Livestock July 10;
and Pigeon, Poultry & Rabbit July 18.

Visit kystatefair.org for details.


Kentucky
STATE FAIR
AUGUST 15-25, 2019
Kentucky Exposition Center / Louisville



Your Image; Our Specialty.



(270) 215-5700

1635 SWEENEY ST • OWENSBORO, KY

WWW.DMCGRAPHICS.COM

Daviess County Fair

ADMISSION PRICES

(Carnival FREE with Paid Admission)

Gates Open at 5:00 p.m.

NO Coolers or Alcohol Allowed

NO Firearms

**CHECK
YOUR PROGRAM
FOR EVENT LOCATION**

<u>Fair Admiss</u>	<u>Adults</u>	<u>Children (3-12)</u>	<u>Children under 3</u>
Wednesday, July 10	\$10.00	\$8.00	FREE
Thursday, July 11	\$10.00	\$8.00	FREE
Friday, July 12	\$12.00	\$10.00	FREE
Saturday, July 13	\$12.00	\$10.00	FREE

**Wednesday through Saturday
Carnival ~ Midway**

Rain Outs ~ NO Refunds

GENERAL RULES

The Daviess County Fair is planned and conducted according to the Kentucky Department of Agriculture regulations for the use of state funds.

All precautions possible will be taken by the Daviess County Fair to prevent accidents to any person, animal, or property and to the destruction, loss, or abuse of any property or to any and all exhibits, but will not be liable for any accidents that may occur to any person, animal, property, or exhibit while at the fairgrounds.

5. Entries made in 4-H, FFA, and FHA Classes must have been produced in conjunction with an approved project sponsored by these organizations.

6. All decisions made by judges and fair officials are final.

7. For medical emergency call 911 and then contact Fair Office (297-9519).

8. Announcements made on day of event take precedence over printed matter.

9. Fair entries must be entered at 4-H building, 7:00 a.m. to 1:00 p.m. and 4:00 p.m. to 6:00 p.m., Tuesday July 9.

10. Entries and premiums can be picked up only on Sunday, July 14 from 2:00 p.m. to 4:00 p.m.

1. Disorderly conduct of any kind is forbidden. Those indulging will forfeit their right to remain on the fairgrounds.

2. Police protection will be provided at all times.

3. Open classes are open to all persons or exhibitors unless otherwise specified.

4. Alcohol or Drugs are not allowed on Fairgrounds.



Daviness County Fiscal Court

COUNTY JUDGE/EXECUTIVE
Al Mattingly

COUNTY ATTORNEY
Claud Porter

Daviness County Courthouse
PO Box 1716
Owensboro, KY 42302-1716
Phone: 270-685-8424
Fax: 270-685-8469
www.davinessky.org

COUNTY COMMISSIONERS
Charlie Castlen – Central Dist.
George Wathen – West Dist.
Mike Koger – West Dist.

Dear Fair Participants,

Welcome to the Daviness County Lions Club Fair! We are glad you are here.

With numerous livestock events, farm implement competitions, agricultural products, and ag-related vendors galore, this year's fair will be one to remember. If you visited the fair in the past, you know the excitement doesn't end there. Many food vendors will be at hand ready to fill your stomach with some delicious, world-class (and some not so world-class) food along with several other attention-grabbing attractions.

You are encouraged to relax and enjoy yourself during the fair and as always, welcome.

Sincerely,

Al Mattingly
Daviness County Judge/Executive



2019 FAIR SCHEDULE

JUNE 27 - THURSDAY

Miss Pre-Teen Pageant..... 7:00 p.m. Hines Center

JUNE 28 - FRIDAY

Miss Daviess County Pageant..... 7:00 p.m. Hines Center

JUNE 29 - SATURDAY

Miss Teen Daviess County Pageant 7:00 p.m. Hines Center

JUNE 30 - SUNDAY

Baby and Toddler Contest..... 1:00 p.m. Hines Center

Little Mister & Miss Pageant 3:00 p.m. Hines Center

JULY 9 - TUESDAY

(Enter 4-H, FFA, Garden, Crops Hay
& Honey Exhibits 4:00 to 6:00 p.m. East Exhibit Building

JULY 10 - WEDNESDAY

4-H/FFA Feeder Calf Show 5:00 p.m. Tom Curtsinger Bldg

Open Beef & Youth Fat Steer Show (After Calf Show) Tom Curtsinger Bldg

Dairy Show (After Fat Steer Show) Tom Curtsinger Bldg

Fire Fighters Challenge..... 7:00 p.m. Miles Arena

ATV 4-Wheel Mud Bogg 7:30 p.m. Small Arena

4-H Garden Exhibits..... 5:00 p.m. until Closing Fair Grounds

Commercial Vendors..... 5:00 p.m. until Closing Fair Grounds

Laser Tag

(Free with admission to fair)..... 5:00 p.m. until Closing Fair Grounds

Inflatable's

(Free with admission to fair)..... 5:00 p.m. until Closing Fair Grounds

Carnival - Rides

Free w/paid admission to fair 5:00 p.m. until Closing Fair Grounds

Pony Rides

Free w/paid admission to fair 5:00 p.m. until Closing Fair Grounds

Petting Zoo

Free w/paid admission to fair 5:00 p.m. until Closing Fair Grounds

JULY 11 - THURSDAY

Open Youth Market Swine Show 6:00 p.m. Tom Curtsinger Bldg

Monster Truck Show 7:30 p.m. Miles Arena

Pit Party 5:00 - 7:00 p.m. Miles Arena

ATV/4-Wheel Mud Bogg 7:30 p.m. Small Arena

4-H Garden Exhibits..... 5:00 p.m. until Closing Fair Grounds

Commercial Vendors..... 5:00 p.m. until Closing Fair Grounds

Laser Tag

(Free with admission to fair)..... 5:00 p.m. until Closing Fair Grounds

Inflatable's

(Free with admission to fair)..... 5:00 p.m. until Closing Fair Grounds

Carnival - Rides

Free w/paid admission to fair 5:00 p.m. until Closing Fair Grounds

Pony Rides

Free w/paid admission to fair 5:00 p.m. until Closing Fair Grounds

Petting Zoo

Free w/paid admission to fair 5:00 p.m. until Closing Fair Grounds

JULY 12 - FRIDAY

4-H Rabbit Show..... 6:30 p.m. Tom Curtsinger Bldg

4-H Poultry Show 7:00 p.m. Tom Curtsinger Bldg

Open Youth Lamb & Goat Show 7:00 p.m. Tom Curtsinger Bldg

Truck & Tractor Pull ... Battle of The Bluegrass 7:00 p.m. Miles Arena

Fireworks over the Fair - During Intermission

4-H Garden Exhibits..... 5:00 p.m. until Closing Fair Grounds

Commercial Vendors..... 5:00 p.m. until Closing Fair Grounds

Laser Tag

(Free with admission to fair)..... 5:00 p.m. until Closing Fair Grounds

Inflatable's

(Free with admission to fair)..... 5:00 p.m. until Closing Fair Grounds

Carnival - Rides

Free w/paid admission to fair 5:00 p.m. until Closing Fair Grounds

Pony Rides

Free w/paid admission to fair 5:00 p.m. until Closing Fair Grounds

Petting Zoo

Free w/paid admission to fair 5:00 p.m. until Closing Fair Grounds

JULY 13 - SATURDAY

Open talent show (registration)..... 5:30 p.m. Bittel Hall

Show Begins..... 6:00 p.m.

Kids' Pedal Tractor Pull (FREE Event ages 3-12). 6:00 p.m. Fair Grounds

Truck & Tractor Pull ... Battle of The Bluegrass 7:00 p.m. Miles Arena

GCPA Garden Tractor and Mini Rod Pull..... 7:00 p.m. Small Arena

4-H Garden Exhibits..... 5:00 p.m. until Closing Fair Grounds

Commercial Vendors..... 5:00 p.m. until Closing Fair Grounds

Laser Tag

(Free with admission to fair)..... 5:00 p.m. until Closing Fair Grounds

Inflatable's

(Free with admission to fair)..... 5:00 p.m. until Closing Fair Grounds

Carnival - Rides

Free w/paid admission to fair 5:00 p.m. until Closing Fair Grounds

Pony Rides

Free w/paid admission to fair 5:00 p.m. until Closing Fair Grounds

Petting Zoo

Free w/paid admission to fair 5:00 p.m. until Closing Fair Grounds

JULY 14 - SUNDAY

Pick up Crops and Exhibits 2:00 until 4:00 p.m. East Exhibit Hall

** (Any crops or exhibits not picked up Sunday will be donated or discarded) **

JULY 20 - SATURDAY

Open Fun Horse Show 6:00 p.m. Small Arena



- Mike Hamilton, Chairman
 - Tim Bowen
 - Bill Jones
 - Jay Bell
 - Joan Hayden
 - Gary Mayfield
 - Dyanne Baker
 - Dr. Walter H. Marsch

AGRICULTURE ADVISORY BOARD:

Clint Hardy.....	County Extension Agent
Joan Hayden	Farm Bureau
Craig Howard	Agriscience, Daviess County
Chad Askins.....	Agriscience, Daviess County
Jason Smith.....	Agriscience, Daviess County
Kellie Burch	Agriscience, Apollo
Aaron Tucker.....	Agriscience, Apollo
Tyler Miller	Adult Ag Teacher
Ashley Thomas	Agriscience, Owensboro Catholic



2019 EVENT CHAIRMANSHIPS

<u>Name/Title of Event</u>	<u>Chairperson</u>
4-H & FFA Steer & Heifer Show	Daniel Hayden & Martin Hayden
4-Wheel ATV Mud Sling	Jay Bell
Ag Youth and Adult Crop.....	Clint Hardy
Baby & Toddler Pageants	Amber Teasley
Beauty Pageant “Miss Daviess County”	Haley London
Beauty Pageant “Miss Teen Daviess County”	Latasha Shemwell
Beauty Pageant “Miss Pre-Teen Daviess County”	Latasha Shemwell
Beef Cattle Show	Daniel Hayden & Martin Hayden
Booth Rentals	Greg Mills
Concessions.....	Gary Mayfield
Dairy Cattle Show	Daniel Hayden
Exhibitors - Commercial	Greg Mills
Fair Catalog.....	Joan Hayden
Feeder Calf Show	Daniel Hayden & Martin Hayden
Firefighters Challenge	Pat Thompson & Marc Henderson
Little Mister and Miss Pageant	Amber Teasley
Pageants	Joan Hayden
Parking	Joan Hayden
Pedal Tractor Pulling Contest	Gayle Rearden & Walter Marsch
Public Relations and Advertising.....	Tim Bowen
Sanitation	Bill Ditto
Security	Keith Cain
Sheep & Goat Show	Stacey Potts
Swine Show	Brad Ebelhar
Truck & Tractor Pulls	Tim Bowen
Talent Show	Latasha Shemwell



2018-2019 PRESIDENT DAVISS COUNTY LIONS CLUB

It's a warm July night in Daviess County, Kentucky and the lights are bright in Philpot, which can only mean one thing...the Daviess County Lions Club Fair is in full swing! Under the blazing illumination of carnival neon to the flashing flares of motorized behemoths, people from all corners will gather to celebrate the pride of the County. From your neighbors' displays of handcrafts, produce, prized livestock, baked goods, and ear shattering turbocharged competition, the fair offers something for everyone nightly.

Of course the food is on! Cuisines of all flavors and aromas will permeate the air. Numerous vendors will be working hard to satisfy even the most curious of appetites. Where else can you get a funnel cake with your pork burger?

A county fair is the result of commitment and the hands on labor from the whole community. The Daviess County Lions Club Fair is no exception. We strive to be a part of our neighborhoods and support the International Lions Club motto: To Serve. The Daviess County Lions Club greatly appreciates all the help and aid from our sponsors. Without their continued support, the Daviess County Fair would simply not be possible.

On behalf of the Daviess County Lions Club, I invite everyone to bring your family and join your neighbors in supporting our community and to have a great time!

All the best,
Mike Hamilton
Daviess County Lions Club President, 2018



*Many thanks for the support of
Our Advertisers and Sponsors
for helping make the
Daviess County Lions Club Fair
A Continued Success*



12

BUILDERS DISCOUNT LUMBER

All Wood Custom Cabinets and Counters

3429 Highway 54 East • Owensboro, KY 42303

270-926-4200



Western Kentucky Minerals

WEST

Surfacing Mining

Gravel

Chip Rock

57s

#3s

#4s

8905 Short Station Rd

Philpot, KY

(270) 281-5005

OHIO VALLEY 2-WAY RADIO

An MPD, Inc. Company



Voice – Data – P25 – IP – 2-Way Radios – Digital – Warranty Services - Consulting

Manufacturing



Speed up delivery, reduce waste, control costs, increase safety, and improve customer service.

Utilities



Keep workers safe and connected with mission and business critical radio solutions.

Hospitality



Equip your staff with mobile, voice, and data solutions and they can provide superior service.

Public Safety



Give first responders the reliable, real time information they need to stay safe and be more efficient.

Ohio Valley 2-Way Radio - 2035 E. Parrish Ave. - Owensboro, KY 42303
270-683-4963 www.ovradio.com

Mitzi Autry's

PORTABLE TOILETS



13 River Road
Owensboro, KY 42301

Cell: 270) 314-6180
Office: (270) 685-3344

GORDON'S *True Value* HARDWARE

321 Washington Ave.
Owensboro, Kentucky 42301
(270) 683-1115

6180 KY 54
Philpot, Kentucky 42366
(270) 729-4261

We've got what it takes *True Value*.



FM **EXCAVATING** **& TRUCKING CORP**

HAWESVILLE, KY
(270) 922-6492

C. G. Williams, Inc.

- Septic Tank Cleaning
- Grease Traps
- Treatment Plant
- Large and Small Capacity Trucks



2008 Reid Road
Owensboro, KY 42303
(270) 683-3383
Fax: (270) 281-0130

C. G. WILLIAMS

JACK HAYDEN

★ **BIG** ★ **D** ★ ★ **R** **I** **E** **P P**

2820 West Parrish Avenue
Owensboro, Kentucky 42301

Phone: (270) 684-4806



OWENSBORO ARCHERY CLUB



KELCAS
Petroleum
Production
& Exploration

3520 New Hartford Road Suite 100 • Owensboro, KY 42303
 Ph: 270-683-1322
www.kelcas.com

KELCAS wishes much success to the
Daviess County Lions Club Fair

Thanks for All You Do For Our Community!

Old Hickory Pit Bar-B-Q

"Where Local Folks Bring Visitors For
 Owensboro's Best Bar-B-Q"

... A fine tradition for 6 generations

MUTTON • PORK • CHICKEN
RIBS • BEEF

Dine In / Carry Out • Catering
Custom Cooking • Gift Certificates

FRI. - SAT., 9 A.M. - 10 P.M.

SUN. - THURS., 9 A.M. - 9 P.M.

338 Washington Ave., Owensboro, KY 42301

(270) 926-9000

Kellems

PLUMBING & SEPTIC SERVICE

(270)233-4000 office/fax • kellemsplumbing@gmail.com

Residential • Commercial • Industrial



ADULT HONEY DIVISION

RULES:

1. All classes except youth classes are open to the world.

2. Each entry of bees, honey or beeswax exhibited ~ must be produced in the exhibitor’s aplary in the last year.

3. An exhibitor will be restricted to one entry in each class. Where there is only one entry in a class, the first prize if merited, will be awarded.

4. Entries will be presented between 4 and 6 p.m. open Tuesday, July 17th.
5. Exhibits should be removed Sunday, July 24th between 8 and 10 a.m.

6. Exhibits may be opened by the judges, if in the opinion of the judge it is necessary.

7. Exhibits will be in standard frames or standard honey jars, except where otherwise noted.

8. Exhibits will not bear ownership labels until after judging.

CLASS NO.

451	Shallow frame of comb honey	\$8.00	\$6.00	\$5.00	\$3.00
452	Deep frame of comb honey	8.00	6.00	5.00	3.00
453	White extracted honey				
	Four 1 pound glass containers.....	8.00	6.00	5.00	3.00
454	Light amber extracted honey				
	Four 1 pound glass containers.....	8.00	6.00	5.00	3.00
455	Amber extracted honey				
	Four 1 pound glass containers.....	8.00	6.00	5.00	3.00
456	Dark amber extracted				
	Four 1 pound glass containers.....	8.00	6.00	5.00	3.00
457	Chunk honey ~ Four 1 pint reg. glass canning jars.....	8.00	6.00	5.00	3.00
458	Cut comb honey ~ Four 1 lb. packages.....	8.00	6.00	5.00	3.00
459	Best quality of beeswax ~ 1 block weighing 1-5 lbs.	8.00	6.00	5.00	4.00
460	Observation hive	20.00	15.00	10.00	
461	Honey gift package - 6 lbs. or less.				
	This display shall consist of a box basket, or any other suitable container of packaged honey.				
	It may contain beeswax products. To be judged on package & contents.				
	NO PERISHABLE ITEMS ALLOWED	15.00	10.00	6.00	2.00

Murphy's

Appliance & Electronics Company

(270) 683-7396

2225 New Hartford Road

Owensboro, KY 42303



2019 CROPS PREMIUM LIST

Approved by Kentucky Department of Agriculture, Division of Show and Fairs, Frankfort, Kentucky

CROP DIVISION

CO-CHAIRMEN: Annette Meyer Heisdorffer and Clint Hardy

COMMITTEE: Monica Connelly, Brenda Clemons, Marty & Rita Jacobs, Wayne Mattingly, Robert Martin, Jeff Rice, Bonnie Nance, Carol Bell, David & Rebecca Carrico, Elaine Williams, Gail Niehaus, Joyce Riney, Nadine Higdon, Patsy Austin, Danna Cook and Paul Puckett

RULES:

1. Entries must be entered at display headquarters from 7 a.m. to 1 p.m. and 4 p.m. to 6 p.m., Tuesday, July 9. Entries and premiums may be picked up from 2:00 to 4:00 p.m. Sunday, July 22. Entries and premiums may be picked up from 2 p.m. to 4 p.m., Sunday, July 14.
2. ALL ENTRIES BECOME PROPERTY OF THE FAIR.
3. Exhibitor will provide baskets or tray for garden display No. 94.
4. In crop entries, the judges will consider uniformity in size and color, freedom from blemishes or signs of disease, cleanliness and designated number for each category in selection of winning entries.
5. All entries of fruit and vegetables not picked up by 4 p.m., Sunday, July 22, will be disposed of properly.

Entries are due Tuesday, July 9 at the Exhibit Building between 4 p.m. and 6 p.m. and may be picked up Sunday July 14 from 2 p.m. to 4 p.m.

FARM CROPS

1. Burley Tobacco, 1 Stick of 5 Stalks	\$20.00	\$17.00	\$15.00	\$10.00
2. DarkAir Cured, 1 Stick of 5 Stalks	\$20.00	\$17.00	\$15.00	\$10.00
3. Soybeans, 3 Plants (with seed pods)	\$15.00	\$10.00	\$8.00	\$7.00
4. Soybeans, 3 Plants (without seed pods)	\$15.00	\$10.00	\$8.00	\$7.00
5. 2019 Yellow Corn - 3 Ears (without husks)	\$15.00	\$10.00	\$8.00	\$7.00
6. 2019 Wheat, 1 Quart	\$15.00	\$10.00	\$8.00	\$7.00

FRUITS

22 - Blueberry - 1 Cup	\$8.00	\$6.00	\$5.00	\$4.00
23 - Apples - Summer 4	\$8.00	\$6.00	\$5.00	\$4.00
24 - Blackberries - 1 Cup	\$8.00	\$6.00	\$5.00	\$4.00
25 - Peaches - Any type, 4	\$8.00	\$6.00	\$5.00	\$4.00

VEGETABLES & MELONS

50 - Beans, Bush - 1 Dozen	\$6.00	\$5.00	\$4.00	\$3.00
51 - Beans, Pole - 1 Dozen	\$6.00	\$5.00	\$4.00	\$3.00
52 - Beans, Lima - 10 in hull	\$6.00	\$5.00	\$4.00	\$3.00
53 - Beets, Any Variety - 4	\$6.00	\$5.00	\$4.00	\$3.00
54 - Cabbage - 1 Head	\$6.00	\$5.00	\$4.00	\$3.00
55 - Cabbage - Largest Head	\$6.00	\$5.00	\$4.00	\$3.00
56 - Cantaloupe - 1	\$6.00	\$5.00	\$4.00	\$3.00
57 - Carrots, Any Variety - 4	\$6.00	\$5.00	\$4.00	\$3.00
58 - Corn, Sweet - 4 White, Shucks	\$6.00	\$5.00	\$4.00	\$3.00
59 - Corn, Sweet - 4 Yellow, Shucks	\$6.00	\$5.00	\$4.00	\$3.00
60 - Corn, Sweet - 4 Bi-Color, Shucks	\$6.00	\$5.00	\$4.00	\$3.00
61 - Cucumbers, for Slicing - 4	\$6.00	\$5.00	\$4.00	\$3.00
62 - Cucumbers, for Pickling - 4	\$6.00	\$5.00	\$4.00	\$3.00
63 - Cuslaw - 1	\$6.00	\$5.00	\$4.00	\$3.00
64 - Eggplant - 2	\$6.00	\$5.00	\$4.00	\$3.00
66 - Onion, White - 4	\$6.00	\$5.00	\$4.00	\$3.00
67 - Onion, Purple - 4	\$6.00	\$5.00	\$4.00	\$3.00
68 - Onion, Yellow - 4	\$6.00	\$5.00	\$4.00	\$3.00
69 - Okra, Green - 7	\$6.00	\$5.00	\$4.00	\$3.00
70 - Peppers, Bell - 4	\$6.00	\$5.00	\$4.00	\$3.00
71 - Peppers, Habenero - 4	\$6.00	\$5.00	\$4.00	\$3.00
72 - Peppers, Banana - 4	\$6.00	\$5.00	\$4.00	\$3.00
73 - Peppers, Jalapeno - 4	\$6.00	\$5.00	\$4.00	\$3.00
74 - Peppers, Cayenne - 4	\$6.00	\$5.00	\$4.00	\$3.00
75 - Potatoes, White - 4	\$6.00	\$5.00	\$4.00	\$3.00



76 - Potatoes, Red - 4	\$6.00	\$5.00	\$4.00	
77 - Potatoes, Largest - 1	\$6.00	\$5.00	\$4.00	\$3.00
78 - Pumpkin, Largest - 1	\$15.00	\$12.00	\$10.00	\$8.00
79 - Squash, Yellow Summer Straight Neck - 3	\$6.00	\$5.00	\$4.00	\$3.00
80 - Squash, Crooked Neck - 3	\$6.00	\$5.00	\$4.00	\$3.00
81 - Squash, Zucchini - 3	\$6.00	\$5.00	\$4.00	\$3.00
82 - Squash, Butternut - 3	\$6.00	\$5.00	\$4.00	\$3.00
83 - Sunflower, Head, Largest.....	\$10.00	\$7.00	\$5.00	\$4.00
84 - Tomatoes, Red, (regular size) - 4	\$6.00	\$5.00	\$4.00	\$3.00
85 - Tomatoes, Red Cherry type - 4	\$6.00	\$5.00	\$4.00	\$3.00
86 - Tomatoes, Roma - 4	\$6.00	\$5.00	\$4.00	\$3.00
87 - Tomatoes, Yellow (regular size) - 4	\$6.00	\$5.00	\$4.00	\$3.00
88 - Tomatoes, Grape (any color) - 4	\$6.00	\$5.00	\$4.00	\$3.00
89 - Tomatoes, Heirloom (any type) - 4	\$6.00	\$5.00	\$4.00	\$3.00
90 - Tomatoes, Largest - 1	\$10.00	\$7.00	\$5.00	\$4.00
91 - Watermelon, Largest by weight	\$15.00	\$12.00	\$10.00	\$8.00
92 - Vegetable Collection, Display area 2½ X 2 feet	\$20.00	\$15.00	\$10.00	\$8.00
93 - Most Unusual Vegetable	\$6.00	\$5.00	\$4.00	\$3.00

FLOWERS

1 - Cosmos - 6 Stems	\$6.00	\$5.00	\$4.00	\$3.00
2 - Celosia (Cockscomb) 3 Stems (any type).....	\$6.00	\$5.00	\$4.00	\$3.00
3 - Dahlia, Large - 3 Stems	\$6.00	\$5.00	\$4.00	\$3.00
4 - Dahlia, Small - 3 Stems	\$6.00	\$5.00	\$4.00	\$3.00
5 - Gladiolus – 3 Stems	\$6.00	\$5.00	\$4.00	\$3.00
6 - Marigold, Large, Orange - 3 Stems	\$6.00	\$5.00	\$4.00	\$3.00
7 - Marigold, Large, Yellow - 3 Stems	\$6.00	\$5.00	\$4.00	\$3.00
8 - Marigold, Large, Other - 3 Stems	\$6.00	\$5.00	\$4.00	\$3.00
9 - Marigold, Small, Orange - 3 Stems	\$6.00	\$5.00	\$4.00	\$3.00
10 - Marigold, Small, Yellow - 3 Stems	\$6.00	\$5.00	\$4.00	\$3.00
11 - Marigold, Small, Other - 3 Stems	\$6.00	\$5.00	\$4.00	\$3.00
12 - Petunia - 6 Stems	\$6.00	\$5.00	\$4.00	\$3.00
13 - Roses, Red - 3 Stems	\$6.00	\$5.00	\$4.00	\$3.00
14 - Roses, Yellow - 3 Stems	\$6.00	\$5.00	\$4.00	\$3.00
15 - Roses, Other - 3 Stems	\$6.00	\$5.00	\$4.00	\$3.00
16 - Sunflowers - 3 Stems	\$6.00	\$5.00	\$4.00	\$3.00
17 - Zinnias, Small - 3 Stems.....	\$6.00	\$5.00	\$4.00	\$3.00
18 - Zinnias, Large - 3 Stems	\$6.00	\$5.00	\$4.00	\$3.00
19 - Snapdragons - 3 Stems	\$6.00	\$5.00	\$4.00	\$3.00
20 - Blue Salvia - 3 Stems.....	\$6.00	\$5.00	\$4.00	\$3.00

HERBS

1 - Peppermint – 3 stems foliage with or without blossoms	\$6.00	\$5.00	\$4.00	\$3.00
2 - Spearmint - 3 stems foliage with or without blossoms.....	\$6.00	\$5.00	\$4.00	\$3.00
3 - Basil, Opal - 3 stems foliage with or without blossoms	\$6.00	\$5.00	\$4.00	\$3.00
4 - Basil, Green - 3 stems foliage with or without blossoms	\$6.00	\$5.00	\$4.00	\$3.00
5 - Lemon Balm - 3 stems foliage with or without blossoms	\$6.00	\$5.00	\$4.00	\$3.00

ARRANGEMENTS (No Silk Flowers)

21 - Dried Flowers - Best Arrangement	\$8.00	\$6.00	\$4.00	\$3.00
22 - Mixed Flowers - Small Arrangement - (Under 10” tall)	\$8.00	\$6.00	\$4.00	\$3.00
23 - Mixed Flowers - Large Arrangement - (Over 10” tall).....	\$8.00	\$6.00	\$4.00	\$3.00
24 - Roses - Best Arrangement	\$8.00	\$6.00	\$4.00	\$3.00
25 - Sunflowers - Best Arrangement	\$8.00	\$6.00	\$4.00	\$3.00

POTTED PLANTS

26 - Potted Houseplants	\$6.00	\$5.00	\$4.00	\$3.00
27 - African Violet.....	\$6.00	\$5.00	\$4.00	\$3.00
28 - Potted Succulents and or Cacti	\$6.00	\$5.00	\$4.00	\$3.00



270-231-8160

**1030 Center St.
Owensboro, KY 42301**

*Building Trust &
Confidence since 1996*

Commercial & Industrial General Contractor

MILES
TRANSPORTATION ^L_{LC}

(270) 926-6188 • OWENSBORO, KENTUCKY



AUTHORIZED DEALER OF
SUKUP & REINKE
PRODUCTS
YOUR PROVIDER FOR
BINS
GRAIN HANDLING
EQUIPMENT & PIVOTS

270-713-0295
OWENSBORO, KY 42303

Family Wellness Solutions

for all of your primary care needs

- Preventative Healthcare
- CDL Physicals
- Sports and School Physicals
- Minor Sutures
- Acute Illnesses
- Basic Vaccines
- Chronic Disease Management
- Home visits for elderly homebound



**6071 HWY 142
Philpot, KY 42366
Phone: 270-713-0177**

Email: LindaBoarmanFNP@outlook.com

Find us on Facebook!

**LABCORP on-site open 7am-4:30pm
Monday-Friday**



270-695-9591

SEPTIC~PORTABLE TOILETS~GREASE TRAPS



The Voice of Daviness County Agriculture

Daviness County

OLE SOUTH

BAR★B★Q

**Dine In
Carry Out
Catering
Drive thru**

**Breakfast,
Lunch,
and Dinner
Buffet**

270-926-6464

**SUNDAY-THURSDAY 6 AM - 8 PM
FRIDAY - SATURDAY 6 AM - 9 PM**

olesouthbbq.com

Western Kentucky Regional Blood Center

Your private non-profit community blood center serving western Kentucky
proudly supports **The DCHS Panthers!**



Blood Center Hours:
Mon., Wed., Thurs.—
8:30 a.m. to 5:30 p.m.
Tuesday—8:30 a.m. to 8:00 p.m.
Friday—8:30 a.m. to 4:30 p.m.
1-270-684-9296

www.wkrbc.org

Sole supplier of blood components
to
Owensboro Health Regional Hospital.

ELECTRICAL EQUIPMENT REPAIR, INC.

Motor Rewinding, Balancing & Repair • All Brands

MOTOR DISTRIBUTORS:

A. O. Smith • Century • Fasco • Leeson • GE • Baldor

SERVICE & WARRANTY:

• Zoeller Pumps • Reddie Heaters

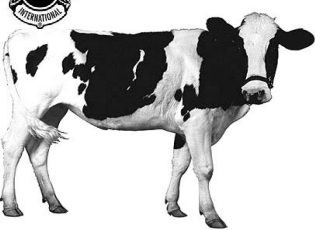
POWER TOOL SERVICE CENTER:

• Milwaukee • Skil & Bosch • Black & Decker
• DeWalt • Reddi Heaters • Makita • Ridgid • Porter Cable

FACTORY SERVICE CENTER

1330 E. 2nd Street

(270) 684-5357

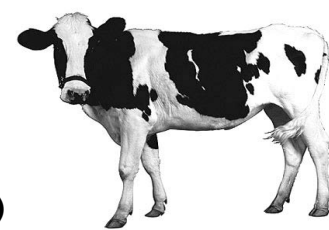


OPEN DAIRY CATTLE SHOW

Chairman: Daniel Hayden

JUDGING: GUERNSEY, BROWN SWISS, HOLSTEIN AND JERSEY

WEDNESDAY, JULY 10, 2019 - (following market cattle)



ALL DAIRY CATTLE DUE ON GROUNDS BY 5:00 P.M.
WEDNESDAY, JULY 18

All animals to enter Fairgrounds thru Gate II

PREMIUMS

Showmanship Class
Junior Calves through Senior Yearlings:
1st - \$25.00, 2nd - \$20.00, 3rd - \$15.00

Cows: 2 years old, 3 years old, 4 years old, Aged Cows
1st - \$25.00, 2nd - \$20.00, 3rd - \$15.00

604 Dairy Steers - May be exhibited by youth ages 9-19 as of January 1, 2019 only. Dairy Steers must be dehorned with horns less than 2 inches in height and healed.

Showmanship Class - Plaque
Junior - 13 years and under
Senior 14 Years & up

CLASSES AND BIRTH DATES FOR 2019 DAIRY SHOWS

Class	Birth Date
605 - Junior Calf	Born March 1, 2018 – April 30, 2019
606 - Intermediate Calf Born	December 1, 2017 – February 28, 2018
607 – Senior Calf	Born September 1, 2017 – November 30, 2018
608 – Summer Yearling	Born June 1, 2017 – August 31, 2018
609 – Junior Yearling	Born March 1, 2017 – May 31, 2018
610 – Intermediate Yearling	Born December 1, 2016 – February 28, 2017
611 – Senior Yearling	Born September 1, 2016 – November 30, 2017
612 – JUNIOR CHAMPION	ROSETTE
613 – 2 Years Old	Born September 1, 2016 – August 31, 2017
614 – 3 Years Old	Born September 1, 2015 – August 31, 2016
615 – 4 Years Old	Born September 1, 2014 – August 31, 2015
616 – 5 Years Old and Older	Before September 1, 2014
617 – SENIOR CHAMPION	\$25 & ROSETTE
618 – GRAND CHAMPION	\$50 & BANNER
619 – RESERVE CHAMPION	\$25
620 – Best 3 females - Bred & Owned by Exhibitor:	
	1ST - \$25.00, 2ND - \$20.00, 3RD - \$15.00

CULINARY – CAKE DECORATING

Daviess County Fair is not responsible for lost or damaged entries.

All entries must be entered at the Exhibit Building from 4 p.m. to 6 p.m., Tuesday, July 9. Entries and **premiums** may be picked up from 2 p.m. to 4 p.m., Sunday, July 14.

Division 3306 – Decorated Cakes or Molds

To facilitate handling and minimize damage – cakes should be placed on footed boards with sufficient space around the cake edge and designed to withstand several moves by Fair staff.

Decorated Cakes MUST be presented on commercially produced forms or very sturdy foil-lined board. Entries may not exceed about 16 inches in diameter, length and/or width including any decoration extending from the cake and about 28 inches in height including ornamentation.

Also, other decorated cakes MUST be presented on commercially produced forms or very sturdy foil-lined board and may not exceed about 16 inches in diameter, length and/or width including any decoration extending from the cake and about 16 inches in height including ornamentation.

JUDGING STANDARDS FOR DECORATED CAKES

Artistry.....	50
Practicality.....	25
Creativity.....	25
TOTAL.....	100

Note: Judging is based primarily on individual hand work and not on the application of purchased ornamentation.

Note: Any cake in any class may employ any technique.

These Classes are Open to PROFESSIONAL/ADVANCED Cake Decorators

For purposes of this Fair contest you are considered a Professional/Advanced Cake Decorator if you make cakes and sell them, or are a cake instructor/teacher, consultant or bakery owner/operator or have skills so refined as to be determined by the Superintendent to be on a Professional/Advanced Level.

Class No.	1st
99 Bridal Cake	Rosette
100 Birthday Cake	Rosette
101 Theme Cake: Tattoos	Rosette

These Classes are Open to INTERMEDIATE Cake Decorators

For purposes of this fair contest you are considered an Intermediate Cake Decorator if you demonstrate decorating skills indicating two or more years' experience but do not sell more than (12) twelve cakes per year for profit.

Class No.	1st	2nd	3rd	4th
105 Bridal Cake	\$10	\$8	\$6	\$4
106 Birthday Cake	\$10	\$8	\$6	\$4
107 Theme Cake: Tattoos	\$10	\$8	\$6	\$4

**80+ USED
GAS &
ELECTRIC
GOLF CARTS
IN STOCK**



7251 HOBBS RD
12 miles west of Owensboro, off Hwy 56 W
Behind Whittakers Gun Store

270.229.3663 **/tonyscarts**

**Open Monday - Friday 9am-5pm
Saturday 10am-2pm**



**FINANCING
AVAILABLE**
**6 MONTHS
SAME AS CASH**
**LOW MONTHLY
PAYMENTS**

**10%
OFF**

**Parts &
Accessories**

With coupon.
Not valid w/other
offers.
Expires 8/31/19

CouponCRAZY

**\$100
OFF**

**Custom Golf
Cart Purchase**

With coupon.
Not valid w/other
offers.
Expires 8/31/19

CouponCRAZY

**10%
OFF**

Service

With coupon.
Not valid w/other
offers.
Expires 8/31/19

CouponCRAZY

SPECIALIZING IN CUSTOM GOLF CARTS

SALES - PARTS

ACCESSORIES

RENTALS - SERVICE

MOTORS - BATTERIES - CHARGER

WHEELS & TIRES - CUSTOM SEATS

Firefighter's Challenge

**Wednesday, July 10, 2019 • 7 p.m.
at Daviess County Fairgrounds
in Miles Arena.**

**See firefighting equipment and your
local departments compete for
bragging rights in multiple events.**



Contact Pat Thompson or Marc Henderson: 270-695-9019



270-233-9440

**10154 HWY 54
WHITESVILLE, KY 42378**



OVER 90 YEARS OF BUSINESS IN THE TRI-STATE AREA

**ALEXANDER
& COMPANY CPAS PSC**

Meeting your accounting needs since 1924

- Tax
- Bookkeeping
- Retirement Planning
- Estate Planning
- Auditing

- Financial Consulting
- QuickBooks Training
- Payroll
- New Business Formation
- Elder Care

(270) 684-3237

www.acocpa.net



OFFICE EQUIPMENT COMPANY

OF OWENSBORO

"Quality Office Supplies and Furniture Since 1949"

1701 Breckenridge Street

Member of:



YOUR BEST VALUE . . . EVERYDAY

FREE DELIVERY

270-926-2222

**OFFICE SUPPLIES
AT DISCOUNT PRICES!!**



GARDEN CENTER

FLOWERS VEGETABLES MULCH

**A
Member
of**



9770 Oak Street Whitesville KY (270)929-3846

54 PIZZA EXPRESS

*"Your Favorite Homemade Pizza
For Over A Decade."*

**Home Of The Top
Heavy Pizza**

East

54 at Villa Point

270-683-5454

West

1700 Starlite

270-683-5400

- PIZZA • SPAGHETTI • SANDWICHES
- CALZONES • LASAGNA • GARLIC BREAD
- BREAD STICKS • SALADS

FREE DELIVERY • DAY OR NIGHT

Eat In - Carry Out - Delivery

We Appreciate Your Patronage



R.C. BRATCHER

**Welding • Radiator
Complete Automotive**

2386 Windhaven Drive
Owensboro, KY 42303

(270) 684-5256 • 1-800-266-9616
Fax: (270) 688-9011

LITTLE MISTER & MISS DAVIESS COUNTY PAGEANT

SUNDAY, JULY 30, 2019
3:00 p.m.

Hines Center, Philpot, KY

For entry applications, go to www.daviesscountyfair.com

FOR INFORMATION CONTACT:
Amber Teasley, 270-297-9519, Ext. 701





Fine Arts & Crafts

Daviess County Fair is not responsible for lost or damaged entries.

All entries must be entered at the Exhibit Building from 4 p.m. to 6 p.m., Tuesday, July 9. Entries and premiums may be picked up from 2 p.m. to 4 p.m., Sunday, July 14.

DIVISION 4004, 4005, 4006

All correctly tagged entries are pre-screened upon check-in by volunteers, handled by runners and immediately hung by volunteers and Fine Arts & Crafts Staff according to the Class # on entry tag.

Entries not meeting the stated specifications will be immediately returned to exhibitor upon disqualification at the check-in table.

REQUIRED: As with all contemporary art photographic imagery comes in every SIZE. ANY photo print up to 16"x20" is permitted and must be mounted proportionately and securely to mat board or foam core board. Mat cannot be Larger than 16"x20"! A square photo may be mounted and matted on any 16" square or smaller. Panorama 3:1 ratio, "postage stamp" size and collage-cut, shaped photos are welcome using full artistic license. Prints on all media are welcome. Regardless of type of print a blackboard will reinforce your mount allowing alligator clip hanging on pegboard.

PROHIBITED: Glass coverings, frames, wires, clips, strings, thin poster board, Masonite, or any sticky substances felt on any part of the front or the back of an entry. The thickness of the entire must not be greater than 1/2 inch.

PREPARING YOUR ENTRY: Print your name on the back of the entry. Do not put your name on the front of the entry itself. IF YOU DO NOT WISH TO RECLAIM YOUR ENTRY AFTER THE FAIR CLOSES, WRITE "RECYCLE" ON THE BACK OF THE ENTRY.

BEST COLOR PHOTOGRAPH

\$25 & Rosette

BEST DIGITAL PHOTOGRAPH

\$25 & Rosette

DIVISION 4004

ASPIRING PHOTOGRAPHY DIVISION

- ASPIRING Division (Intermediate and Novice) Photographers – For purposes of this fair competition you are considered "ASPIRING" if you have never entered before or have won a blue ribbon but do not sell photographs as describe in "ACOMPLISHED" Division. Entrants must abide by all entry rules of the Photography Division.
- Each entrant is permitted one entry only in each class. Photographs may not duplicate an image (i.e. 'color' to monochrome) used in any other class and duplicates will be eliminated from competition.
- All photographs must be the original work of the artist (with the exception of the actual printing).

Judge(s) reward artistic merit and look for prints demonstrating photographic excellence, high standards of fine art criteria in each class category. Photographs entered must be prints of your original captured image and must represent one of the following photographic class categories and must be tagged correctly for that specific class.

Awards in each class 1st - \$10.00 2nd - \$8.00 3rd - \$6.00 4th - \$4.00

All Awards and Honorable Mention ribbons will be awards at judge's discretion.

MONOCHROME

BLACK & WHITE, OR TONED, INCLUDING SEPIA

(NOTE: Hand-tinted images or monochrome images that have been digitally manipulated to show a specific color (such as a red dress in a black and white print) must be entered in the color classes.)

Class No.

- 60. PEOPLE/Human (two or more) depicted in posed or candid compositions.
- 61. PLACES (any local and global) TAG must name photographed LOCATION for public enjoyment. Includes scenic, natural landmarks and urban environments.
- 62. THINGS (DIGITAL Art) "grouped" arrangements of objects, "stuff", collectibles, "still life" use interior lighting or best use (window) natural lighting (books, art, toys, tables, food, tools, furniture, etc.) NO Pets. NO people.

COLOR

Class No.

- 70. PEOPLE/Human (two or more) depicted in posed or candid compositions.

- 71. PLACES (any local and global) TAG must name photographed LOCATION for public enjoyment. Includes scenic, natural landmarks and urban environments.
- 72. THINGS (DIGITAL Art) "grouped" arrangements of objects, "stuff", collectibles, "still life" use interior lighting or best use (window) natural lighting (books, art, toys, tables, food, tools, furniture, etc.) NO Pets. NO people.

To avoid disqualifications, please follow specifications for size and mounting descried at beginning of photography section.

Division 4005

ACCOMPLISHED PHOTOGRAPHY DIVISION

- For purposes of this fair competition you are considered "ACCOMPLISHED" if you make photos and sell them, are a teacher of photography or operate a commercial studio.
- Exhibitors who are eligible to enter the accomplished division may NOT enter the aspiring division (4004 Intermediate and Novice).
- Each entrant is permitted one entry only in each class. Photographs may not duplicate an image (i.e. 'color' to monochrome) used in any other class and duplicates will be eliminated from competition.
- All photographs must be the original work of the artist (with the exception of the actual printing).

Judge(s) reward artistic merit and look for prints demonstrating photographic excellence, high standards of fine art criteria in each class category. Photographs entered must be prints of your original captured image and must present one of the following photographic class categories and must be tagged correctly for that specific class.

Awards in each class 1st - \$10.00 2nd - \$8.00 3rd - \$6.00 4th - \$4.00

All Awards and Honorable Mention ribbons will be awarded at judge's discretion.

MONOCHROME

BLACK & WHITE, OR TONED, INCLUDING SEPIA

(NOTE: Hand-tinted images or monochrome images that have been digitally manipulated to show a specific color (such as a red dress in a black and white print) must be entered in the color classes.)

Class No.

- 80. PEOPLE/Human (two or more) depicted in posed or candid compositions.
- 81. PLACES (any local and global) TAG must name photographed LOCATION for public enjoyment. Includes scenic, natural landmarks and urban environments.
- 82. THINGS (DIGITAL Art) "grouped" arrangements of objects, "stuff", collectibles, "still life" use interior lighting or best use (window) natural lighting (books, art, toys, tables, food, tools, furniture, etc.) NO Pets. NO people.

COLOR

Class No.

- 90. PEOPLE/Human (two or more) depicted in posed or candid compositions.
- 91. PLACES (any local and global) TAG must name photographed LOCATION for public enjoyment. Includes scenic, natural landmarks and urban environments.
- 92. THINGS (DIGITAL Art) "grouped" arrangements of objects, "stuff", collectibles, "still life" use interior lighting or best use (window) natural lighting (books, art, toys, tables, food, tools, furniture, etc.) 'NO Pets. NO people.

Division 4006

STUDENT PHOTOGRAPHY

- Fine Arts and Photography specifications and Rules 1-3 apply to the Student Photography Division, with the following exception: This section is open to middle and high school students in grades 6-12. Grade level will be determined by the 2017-2018 school year.**
- Entrants should write their name, school and grade on the folded area of the**

Fine Arts & Crafts continued

entry tag. This information will be covered at the time of judging but will be visible to the public when prints are on display.

The conceptualization, set up and taking of the photograph should originate with the student.

Awards in each class 1st - \$10.00 2nd - \$8.00 3rd - \$6.00 4th - \$4.00

MONOCHROME

Class No.

100 PETS WITH PEOPLE (DOMESTIC OR WILDLIFE): Candid and formal shots may depict animals interacting with any number of humans (No hunting photos.) Any performing, domestic, wild and exotic creatures (Zoo shots) not violating animal protection law allowed. Human Portraiture MUST include a pet when composed.

101 AMERICAN CITIES, 50 STATES AND U.S. LANDMARKS: Travel and family vacation shots encouraged, Parks (by name) indicate location on tag. People may be included.

COLOR

Class No.

104 PETS WITH PEOPLE (DOMESTIC OR WILDLIFE): Candid and formal shots may depict animals interacting with any number of humans (No hunting photos.) Any performing, domestic, wild and exotic creatures (Zoo shots) not violating animal protection law allowed. Human Portraiture MUST include a pet when composed.

105 AMERICAN CITIES, 50 STATES AND U.S. LANDMARKS: Travel and family vacation shots encouraged, Parks (by name) indicate location on tag. People may be included.

ELDER



PIPE & SUPPLY CO., INC.

1615 Sweeney Street
P. O. Box 1302 • Owensboro, KY 42302

Office: 270-684-0088

Fax: 270-684-5292

HOWARD'S BODY SHOP INC.

"We Can Make your Car beautiful Again"

270-233-5436

8172 Ward Rd.

Whitesville, Ky 42378



CENTURY 21[®]

Partners

GAIL NIEHAUS

CR5, GR1, SFR, MRP, ABR, PSA
Realtor[®]

3317 Frederica Street | Owensboro, KY 42301

Call or Text 270.316.7257

gniehaus@century21partners.com

www.gailniehaus.com



THE GLENMORE DISTILLERY





Ward Family Dentistry, PSC

TERRY A. WARD, D.M.D.

730 West 12th Street • Owensboro, KY 42301

Telephone: 270-683-1336 • Fax: 270-689-1841

(OFFICE HOURS BY APPOINTMENT)

RuralKing.com

America's Farm & Home Store



WE ARE LENDING

(270) 926-2000

SOUTH CENTRAL BANK

southcentralbank.com



Member
FDIC





HILLIARD LYONSSM

Strategic Wealth Advisory Group

A Baird Company

J.J.B. HILLARD, W.L. LYONS, LLC | MEMBER NYSE, FINRA & SIPC

Proud supporters of the Daviness County Fair

Come join us at the Fairgrounds.



Call Farm Credit today.

OWENSBORO OFFICE

270-684-6251

3216 Buckland Square, Owensboro, KY 42301

Or go to e-farmcredit.com



ADAM JACKSON EXCAVATING LLC

Adam Jackson - Parishioner

(270) 315-6681

- Lakes • Dirt For Sale • Rock Hauling
- Farm Work • Driveways
- Building Pads/Foundations

ALEX G. BRYANT

Agent

Auto, Home, Life & Health

270-993-9272

2645 Frederica Street, Ste. 100

Owensboro, KY 42301

Office: 270-926-9600

Fax: (270) 926.9620

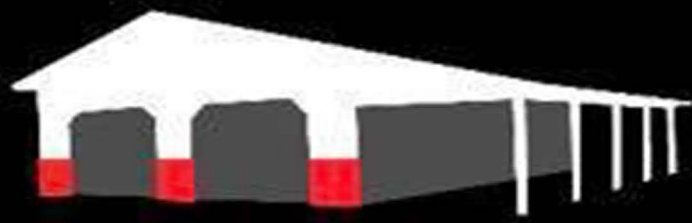
email: Alex.Bryant@kyfb.com



KENTUCKY FARM BUREAU



BIG ON COMMITMENT.®



MORRIS

POST FRAME

POLEBARN MATERIAL • GARAGE DOOR SALES • METAL SALES

270-929-3868





Providing Hands-On Fishing

Our attraction is fun for families and kids of all ages.

*** Fishing Instructors are on site at all times making sure fishermen are safely having fun.**

Friday and Saturday

July 12-13 2019

5:00 pm to Closing

ADDRESS:

4257 Tippecanoe Rd.
Youngstown, Ohio
44511

PHONE:

330-FISHING
(347-4464)

EMAIL:

firstbitefishing@aol.com





4-H HOME ECONOMICS AND AGRICULTURE PRODUCTS

Exhibits must be entered Tuesday, July 9, 2019, from 7 a.m. - 1 p.m. and 4 p.m. to 6 p.m.

Entries must be picked up from 2:00 until 4:00 p.m. on Sunday, July 14, 2019



General Rules:

1. 4-H Entries will be accepted at the Exhibit Hall at the Daviess County Lions Club Fairgrounds on July 9, 2019 from 7 a.m.- 1 p.m. and 4 - 6 p.m. No late entries will be accepted.
2. All exhibits and premiums shall be picked up at the Exhibit Hall on Sunday July 14 from 2-4 p.m. All exhibits remaining after 4 p.m. may be disposed of or donated. Premiums will be available for pick up at the Daviess County Extension Office for a limited time to follow.
3. All decisions made by the judges are final.
4. There are no entry fees for 4-H classes.
5. Unless noted otherwise, 4-H'ers may enter one item per class in each eligible category.
6. 4-H entries are open only to those youth enrolled in 4-H. If you are not currently enrolled, you may do so at the time of entering exhibits.
7. Cloverbud classes are open to youth enrolled in 4-H at the age of 5-8 years old as of January 1, 2019. Cloverbuds are eligible to enter all 4-H classes at the County level **only**. A few additional 'Cloverbud Only' classes are available and may be found among standard categories throughout the 4-H fair classes. This allows youth and parent to prepare as the Cloverbud reaches 4-H age.
8. Junior classes are open to youth enrolled in 4-H at the age of 9-13 years old as of January 1, 2019.
9. Senior classes are open to youth enrolled in 4-H at the age of 14-18 years old as of January 1, 2019.
10. The Superintendent shall have the duty and authority to reject any entry that in his/her opinion is unworthy of entry.
11. A 4-H Identification card must be secured to each entry. This card should be secured to the exhibit in a visible location. Attach in the lower right corner when able. This Identification card will be available at registration.
12. Each entry must be the work of the exhibitor and an original creation by the exhibitor when able.
13. Entries must have been completed by the exhibitor since the 2018 Daviess County Fair.
14. Project entry must meet all the requirements for the class; otherwise, the entry will be disqualified.
15. The Danish System will be used in scoring each exhibit with a Grand Champion for each division. The Danish System is as follows:
 - a. Blue – Excellent work
 - b. Red – Good work needing some improvement
 - c. White – Good effort needing improvements
 - d. Green – Participation Ribbon, the item did not meet criteria

4-H TOBACCO EXHIBIT

Division 2101 – Burley

Division 2102 – Dark Stripped

Division – 2103 – Green Stick & Potted Burley

1. See General Rules applying to all 4-H Exhibitors and general rules applying to all exhibits other than livestock listed previously in this catalog.
2. 4-H exhibitors are eligible to compete in only **one** division of the youth show (not 4-H AND FFA). However, they may compete in the Open Youth Class, provided they have separate entries for that class.

3. Entries infected with insects or disease, or exhibiting severe damage, shall be discarded at the discretion of the Superintendent.
4. Each stick of green tobacco consists of 4 stalks per stick. The Superintendent and staff will NOT select a stalk to remove if 5 are included on the stick. It will be the duty of the exhibitor to select the stalk to remove.
5. All entries in the green stick classes should be wilted for a better presentation, but must still be in **GREEN STAGE**. Green tobacco will be judged on uniformity, general appearance and quality. The Superintendent has the right to disqualify any stick entered into the green stick category that has cured beyond the green stage.
6. All growing tobacco plants should be potted in a waterproof plastic bag and placed in an attractive container before arrival at the Fair. A five (5) gallon bucket is suggested.
7. Each exhibit of stripped Burley tobacco shall consist of two (2) hands, each hand shall be made of twenty (20) leaves or more.

ALL 4-H BURLEY SHOULD BE ENTERED AS DIVISION 2101

BURLEY DIVISION – STRIPPED

CLASS NO.

- 5 Flying
- 6 Lug
- 7 Leaf
- 8 Tip

BURLEY - BEST CROP

CLASS NO.

- 15 Best Crop, 4-H, 4 grades

Entries shall be on an individual basis and must be produced by the exhibitor. An entry shall consist of four grades: Flying, Lugs, Leaf and Tips. Each grade shall consist of two hands of 20 leaves each and samples entered in Classes 6 through 8 shall not be considered for this class.

ALL 4-H DARK TOBACCO SHOULD BE ENTERED AS DIVISION 2102

Entries shall be on an individual basis and must be produced by the exhibitor. An entry shall consist of four grades: Wrappers, Heavy Brown Leaf, Dark Leaf, and Thin Brown Leaf.

DARK TOBACCO

CLASS NO.

- 26 4-H Best Crop
(2 hands – 20 leaves each grade)

4-H CLASS GREEN DARK TOBACCO (BY STICKS):

CLASS NO.

- 31 Dark

GROWING DARK TOBACCO PLANT

CLASS NO.

- 33 Best potted growing plant of Dark Tobacco, any type



GREEN STICK AND POTTED BURLEY TOBACCO SHOULD BE ENTERED AS DIVISION 2103

4-H CLASS GREEN TOBACCO (BY STICKS):

CLASS NO.

36 Burley

CLASS NO.

39 Best potted growing plant of Burley Tobacco

If you submit an exhibit to the State level, all potted plants will become the property of the Kentucky State Fair and after judging will be used as decorations throughout the Fair for promotion of the Tobacco Department.

DIVISION 6015 4-H HORTICULTURE & PLANT SCIENCE

- See General Rules applying to all 4-H Exhibitors and general rules applying to all exhibits other than livestock listed previously in this catalog.
- Examples of acceptable exhibits are listed below. Plants, photographs or other visual aids are necessary for most projects. The class will be governed by the following:
 - Exhibits will be judged on the quality of the primary (horticulture) project work.
 - All plants exhibited **MUST** have been grown by the 4-Hers for at least 6 months. Exceptions will be made with terrariums, dish gardens and annual and vegetable bucket gardens which may have been grown for a shorter period of time.
 - Items improperly entered will be disqualified.
 - Exhibits entered with pesticide residue will be disqualified and disposed of.
 - Care will be provided for all plants. However, because of low light, air conditioning, etc., no guarantee can be made that the plants will be returned in their original condition. Plants are entered at the risk of the exhibitor.
 - Vegetable entries should be fresh, with the label on top of exhibit. Do not stick toothpicks in produce.

YOUTH SHOULD NOT USE GARDEN SOIL IN CONTAINERS. USE WELL-DRAINED, DISEASE-FREE POTTING SOIL FOR ALL CONTAINERS.

CLASS NO.

- Environmental Awareness (Such as but not limited to) A one page description of project must accompany entry item (type or printed neatly) to be eligible for entry.
 - Tree planting on city property, roadways, parks, etc.
 - Home landscaping
 - Composting
- Production and Marketing (such as but not limited to)
 - Vegetable garden planted for home and/or market use.
 - The planting, production, or management of fruit plantings.
 - The planting, production, or management of trees, shrubs, greenhouse crops or garden perennials.
- Experimental Horticulture (such as, but not limited to) A one page description of project must accompany entry item (type or printed neatly) to be eligible for entry.
 - "Science Fair" type of exhibit involving experimental work with plants
 - Comparison of different varieties of vegetables or annual flowers
 - Comparison of mulching or other cultural practices
- Horticultural Project Exhibits (such as, but not limited to) A one page description of project must accompany entry item (type or printed neatly) to be eligible for entry.
 - How to propagate plants
 - How to force spring bulbs
 - How to start seeds
 - How to graft cacti

E. How to dry herbs

PLANT DISPLAYS:

CLASS NO.

- Terrariums
- County level only – Fresh cut arrangement of 3-10 flowers. Must label flower type, may contain a variety of flowers.
- Dish gardens (desert or tropical)
- Vegetable container gardens (grown in container - not dug out of the garden)
- Annual container gardens - (non-vegetable)
- House plants
- Hanging baskets
- Herb Container Garden
- CLOVERBUD Earth Buddy – Make your own Earth Buddy. Directions are available from the Daviess County Extension Office.
- Window Box Display
- Upcycle Container Garden (Previously used container recycled, example, wood pallet garden)

GARDEN AND/OR ORCHARD DISPLAYS

CLASS NO.

- The exhibitor may exhibit as many different fruits and/or vegetables from their garden as desired. Any size or type (minimum of five types) of produce may be displayed in the 2'x3' area provided for each exhibit. The exhibit must be in a display container (box or basket) which can be easily moved. Vegetables will not be returned to exhibitor. They will be judged as follows:

Quality of Produce	40%
Attractiveness of Container	30%
Number of different types	15%
Uniformity and true-to-teepees	10%
Labeling	5%

4-H'ers may also exhibit plates of vegetables. **A white paper plate for vegetables must be supplied by the exhibitor.** These vegetables will not be returned to the exhibitor. Classes of vegetables will be limited to:

CLASS NO.

- Tomato (5 per plate) Must be ripe (red or yellow color only) cherry type
- Tomato (5 per plate) beef steak
- Tomato (5 per plate) heirloom
- Peppers, hot (5 per plate)
- Peppers, bell (5 per plate)
- Peppers, sweet (5 per plate)
- Cucumbers, slicing (5 per plate)
- Cucumbers, pickling (5 per plate)
- Beans, snap or Lima (12 per plate)
- Corn, sweet (in the husk with silks) (5 ears per plate)
- Cantaloupe (1 whole), **halved**

They will be judged as follows:	Condition	25%
	Quality	20%
	Uniformity	20%
	True-To Type	20%
	Size	15%

The largest vegetable may not be the highest quality, nevertheless, it is unique. The largest entry in each of the following classes will receive a class champion ribbon.

CLASS NO.

- Largest Tomato (by weight) Must be ripe (red or yellow color only)
- Largest Pumpkin (by weight)
- Largest Watermelon (by weight)

DIVISION 6018 - 4-H CROPS PROJECT

1. See General Rules applying to all 4-H Exhibitors and general rules applying to all exhibits other than livestock listed previously in this catalog.
2. Grain samples must be of good quality and free from foreign matter. The Superintendent has the authority to refuse any and all entries due to excess chaff, rodent pellets, mold, musty, foreign materials, or anything that makes is unsuitable for display. Do not bring grains in glass containers. **Grain must be in one (1) gallon zip lock bags. ID tags and yield/variety information must be attached to bag.**
3. Bring ½ hay bale securely bound with cord or twine. **Place ½ hay bale in a large double strength garbage bag.** Tags must be attached to the bale and not the bags.
4. **Legume hay shall consist of 85% of the class designed as legume. Grass hay shall be 85% of the class designed as grass. Mixed hay should contain only one eligible grass and one eligible legume. The legume component shall be at least 30 percent alfalfa and not more than 70% legume. Eligible legumes are alfalfa, red clover, and ladino clover. Eligible grasses are timothy, Bermuda grass, orchard grass, tall fescue and rye grass.**
5. The field corn and popcorn will be exhibited on plates or in a Ziploc bag. Variety and yield information must be included.
6. Roots of soybeans must be washed.

LEGUME HAY:

CLASS NO.

- 600 Alfalfa hay, ½ bale (no full bales accepted) from the current year's project crop, neatly tied and labeled.
- 601 Red clover hay, ½ bale (no full bales accepted) from the current year's project crop, neatly tied and labeled.

GRASS HAY:

CLASS NO.

- 602 Timothy Hay, ½ bale (**no full bales accepted**) from this current year's project crop, neatly tied and labeled.
- 603 Other Grass Hay, ½ bale (**no full bales accepted**) from the current year's project crop, neatly tied and labeled.

MIXED HAY:

CLASS NO.

- 604 Mixed Hay, ½ bale (**no full bales accepted**) from the current year's project crop, neatly tied and labeled.

YELLOW CORN:

CLASS NO.

- 605 Yellow-ear, from the previous year's crop, 8 ears shucked, and labeled with variety and yield.
- 606 Yellow-ear, from the current year's crop, 8 ears shucked, and labeled with variety and yield.
- 607 Yellow-shelled, from the previous year's crop, 0.5 gallon in a container, and labeled to show variety and yield.

WHITE CORN:

CLASS NO.

- 608 White-ear, from the previous year's crop, 8 ears shucked, and labeled with variety and yield.
- 609 White-ear, from the current year's crop, 8 ears shucked, and labeled with variety and yield.
- 610 White-shelled, from the previous year's crop, 0.5 gallon in a container, and labeled to show variety and yield.

POPCORN:

CLASS NO.

- 611 White Popcorn-ear, from the previous year's crop, 8 ears shucked, and labeled with variety and yield.
- 612 Red Popcorn-ear, from the previous year's crop, 8 ears shucked, and labeled

with variety and yield.

- 613 Yellow Popcorn-ear, from the previous year's crop, 8 ears shucked, and labeled with variety and yield.

FIELD SOYBEANS (Oil):

CLASS NO.

- 614 Soybeans from the current year's crop, three stalks tied together below leaves, with roots intact, but free of soil, and labeled to show variety.
- 615 Soybeans from the previous year's crop. 1-gallon zip lock bag, and labeled to show variety and yield.

GRAIN SORGHUM (Milo):

CLASS NO.

- 617 Grain Sorghum from the current year's crop, three stalks tied together below leaves, with roots in tact, but free of soil, and labeled to show variety.
- 618 Grain Sorghum from the previous year's crop, 1-gallon zip lock bag, and labeled to show variety and yield.

SWEET SORGHUM

CLASS NO.

- 619 Sweet sorghum from the current year's crop, three stalks tied together below leaves, with roots intact, but free of soil, and labeled to show variety.

WHEAT (Soft, Red, Winter)

CLASS NO.

- 620 Wheat from the current year's crop, 0.5 gallon in a container, and labeled to show variety and yield.
- 621 Barley from the current year's crop, 0.5 gallon in a container, and labeled to show variety and yield.

Division 6021 - 4-H ELECTRIC

1. See General Rules applying to all 4-H Exhibitors and general rules applying to all exhibits other than livestock listed previously in this catalog.
2. Exhibits must be made based on the appropriate units in the 4-HCCS Electric Excitement project books, except Cloverbud only' classes. **Projects entered using Snap Circuits® kits will be disqualified.**
3. All exhibits requiring bulbs must have the correct size.
4. Use of molded plug-ins is **not prohibited but discouraged.**
5. Any electric project observed or judged to be unsafe or potentially harmful to the public or surroundings will be disqualified immediately.
6. Effective strain relief should be provided for all wire to terminal connections. Knots, clamps, connectors, or staples are acceptable when used appropriately.

MAGIC OF ELECTRICITY (4HCCS BU-06848) (All exhibits must be DC powered).

CLASS NO.

- 645C CLOVERBUD Rocket – Design and build your own rocket using supplies around your house.
- 645 Battery powered series and parallel circuits (Circuits must include both series and parallel, a simple switch and can be no more than 9 volts).
- 646 Homemade Galvanometer (Must be able to detect the presence of an electrical current)
- 647C CLOVERBUD Paper Airplanes – Design and make your own paper airplane.
- 647 Electromagnetic Circuits (Must be a working electromagnet with a simple switch and can be no more than 9 volts).
- 648 Simple homemade DC motor (Rotor must turn under its own power).

INVESTIGATING ELECTRICITY (4HCCS BU-06849) (all exhibits must be DC powered)

CLASS NO.

- 649 Battery powered series or parallel circuit (Circuit may be either series or parallel, must contain either a momentary and/or three way switch, a circuit diagram with explanation and can be no more than 9 volts).



- 650 Original design soldered circuit project (Circuit must contain an on/off switch, a motion or tilt activated switch, a light and sound producing device and must be powered by 9 volts. All connections in the circuit must be soldered and a circuit diagram with explanation must be included).

WIRED FOR POWER (4HCCS BU-06850) (all exhibits must be AC powered and be able to be safely connected and disconnected from a standard 120 volt duplex outlet).

CLASS NO.

- 651 Display of wire sizes and types with description and example of usage (display must contain at least 12 different examples)
- 652 Simple household or farm use circuit (Circuit must contain one single pole switch controlling one electrical load device. Circuit should be mounted on a sturdy mounting surface and free standing. Wiring should be done with Romex NM-B 12 gauge wire and clamped or stapled appropriately. A circuit diagram with explanation must be included)
- 653 Complex household or farm use circuit (Circuit must contain at least two three-way switches, and may also contain a four-way switch, controlling one electrical load device. The circuit must also contain a working duplex electrical outlet. Circuit should be mounted on a sturdy mounting surface and free standing. Wiring should be done with Romex NM-B 12 gauge wire and clamped or stapled appropriately. A circuit diagram with explanation must be included)
- 654 Table, desk, vanity or floor lamp, any purpose – original design only. (Pop Can Lamp kits will be disqualified)

ENTERING ELECTRONICS (4HCCS BU-06851) (exhibits may be either DC or AC powered. AC powered exhibits must be able to be safely connected and disconnected from a standard 120 volt duplex outlet).

CLASS NO.

- 655 Basic electronic circuits without solid-state components (from project book).
- 656 Basic electronic circuits with solid-state components (from kit).
- 657 Basic electronic circuits with solid-state components (original circuit design, must include circuit diagram and explanation).

GREEN ENERGY

CLASS NO.

- 658 Wind or solar powered energy project (from kit).
- 659 Wind or solar powered energy project (original design).

Division 6025 - 4-H WOOD SCIENCE

- See General Rules applying to all 4-H Exhibitors and general rules applying to all exhibits other than livestock listed previously in this catalog. . Reference materials include the Ky. 4-H Wood Science Plans Notebook and the 4-H CCS Woodworking Wonders guides.
- An exhibitor may **enter only one** Wood Science class per year.

CLASS NO.

- 674 Level 1, **made from a kit.** Simple items which have pre-cut and pre-drilled parts and youth demonstrate knowledge of assembly, selection and use of fasteners (nails, screws and/or glue), sanding techniques, and appropriate finishes. (Examples could include but not limited to: small bird house, non-hopper bird feeder, etc.) Item must demonstrate skill with fasteners, sanding and appropriate finish (no puzzles).
- 675 Level 1, **NOT from a kit.** Simple constructed wood item showing knowledge of hand tools, wood selection, cutting, drilling, usage of fasteners (nails, screws and/or glue), sanding techniques, and appropriate finishes. (Examples could include but not limited to: napkin holder, letter holder, simple picture frame, wire wiggly, towel holder, serving tray, jewelry box, small flag holder, 4-H book ends, airplane, hurricane lamp, trivet (pot holder), etc.)

- 676 Level 2, **made from a kit.** More elaborate items which require proper cutting, drilling and youth demonstrate knowledge of selection and skill in use of fasteners (nails, screws and/or glue), sanding techniques, and appropriate finishes. (Examples could include but not limited to: jewelry box, tool tray, large bird house, pine wood cars, etc.) Item must demonstrate skill with fasteners, sanding and appropriate finish (no puzzles).
- 677 Level 2, **NOT from a kit.** More elaborate items that demonstrate mastered skills with hand tools, basic knowledge of power hand tools, fastening options, appropriate surface preparations, and finish applications. (Examples could include but not limited to: puzzle, foot stool, revolving tie rack, 4-H key holder, cutting board, book rack, serving dish shelf, sawhorse, hopper type bird feeder, etc.)
- 678 Level 3, **NOT from a kit.** Items showing a more advanced knowledge of power tools, expertise in cutting, fitting, surface preparation, attention to fastening details, and finish application, (Examples could include but not limited to: a multi-purpose box, corner shelf, book shelf or laminated wood projects, garden bench, planting box, nail and tool box, shop tool rack & shelf, etc.) Original designs are welcomed. This exhibit is to be made up of two parts: 1) the **item** and 2) a **folder containing photographic documentation** of the steps taken in order to complete this exhibit.
- 679 Level 4, **NO kits.** Exhibits with a “furniture” quality finish, showing an understanding of all woodworking techniques learned in previous levels. Items must show a mastery of joint construction and use of special woods, and finishes. (Examples could include but not limited to: checker board room divider, coffee table, end table, chest of drawers, gun rack or cabinet, etc.) Original designs are welcomed. This exhibit is to be made up of two parts: 1) the **item** and 2) a **folder containing photographic documentation** of the steps taken in order to complete this exhibit.
- 680 Level 4, **NO kits.** Exhibits do not require a fine finish (painted finish allowable) because of practical use. Items demonstrate knowledge of all woodworking techniques learned in previous levels. Items must show a mastery of cutting, drilling, joint construction, use of special woods, and appropriate finishes. (Examples could include but not limited to: porch swing, chaise lounge, picnic table, lawn chair, large planters, etc.) This exhibit is to be made up of two parts: 1) the **item** and 2) a **folder containing photographic documentation** of the steps taken in order to complete this exhibit

Division 6026 – ECOLOGY, NATURAL RESOURCES

- See General Rules applying to all 4-H Exhibitors and general rules applying to all exhibits other than livestock listed previously in this catalog.
- An exhibitor may enter only one class Entomology and no more than two entries in Honey (one extracted, one chunk).**
- Specifications for pinned-insect exhibits 687A, 688, 689, and 691 (see below for insect photography exhibit, 687B):
 - 9" x 13" folding cardboard insect-collection boxes available through UK College of Agriculture, Department of Entomology, should be used. However, homemade or purchased wooden exhibit boxes may be used instead. They must be approximately 18" x 24" and not more than 3 1/2" thick with Plexiglas or glass covers and cellox pinning bottoms (or plastazote or polyethylene pinning bottoms available from entomology supply stores such as Bioquip.com). Boxes must be easily opened.
 - Specimens are to be arranged so the box can be exhibited horizontally. 4-H'ers may attach wires to the back of wooden boxes to help make them easier to display.
 - Identification labels available from your County Extension Office must be used. The exhibit identification card should be placed on the front of the box (each box). Instructions for pinning and labeling are included in your project literature.
 - One half of the specimens may be from the previous year's collection or from anywhere in the United States; one half or more must be Kentucky insects collected since the last Fair. No insects that were originally collected from countries outside of the United States may be included.

- e. For the first through fifth year projects, a display collection catalogue must be in an envelope attached to the back of the display box. Envelopes should be attached to permit their being opened easily to remove catalogue from them without moving the exhibit.
 - f. Most specimens in the display cases should be pinned, and the use of vials is discouraged. If vials are used, they may account for no more than 2% of a collection. Vials must be securely wired or pinned to the pinning bottoms.
 - g. The inclusion of non-insect specimens (spiders, e.g.) is encouraged, but because this is primarily an insect collection, and because non-insects do not preserve well on insect pins, points will be deducted if there are more than one specimen from each non-insect class.
4. Entomology exhibits are judged on the following categories: Orders, Species, Common Names, Labels, Condition of Specimens, Overall Appearance, Life Cycle Representation, and Catalog of Specimens. Check with county 4-H Agent for point distribution on score sheet.
5. Exhibits will be penalized if they do not:
- a. Use insect pins for pinning insects.
 - b. Use the 4-H Entomology identification labels.
 - c. Use display boxes that are not the official 9" x 13" cardboard boxes acquired through the Dept. of Entomology, or wooden boxes that are approximately 18" x 24" x 3 1/2".
 - d. Fulfill the requirements of the particular exhibit under which it is entered.
 - e. Have the insects arranged so the box can be exhibited horizontally.
 - f. Have the display collection catalogue in an envelope attached to the back of the display box through fifth year projects.
6. No extra credit will be given for specimens exhibited beyond the numbers listed in the current project books.
7. 4-H'ers entering fifth year cannot use the same exhibit that has been judged in any previous State Fair.

CLASS NO.

- 687C CLOVERBUD Spider Web – Design and Build your own spider web.
- 687A First year project (Up to three 9" x 13" official cardboard boxes, or up to two 18" x 24" wooden boxes, with minimum of 25 insects, maximum 50 insects, from at least four orders. Identification beyond order not necessary. All specimens must have date and locality label.)
- 687B First year project (minimum of 25 insect photographs, maximum 50 photographs, from at least four orders. Identification beyond order not necessary. All photographs must have notation field.)
- Specifications for insect photography exhibits:
- a. Images will be submitted on a USB memory device (such as a "thumb drive") with no other data except for the images and folders. The USB device must be identified externally with a tag or label, showing "4-Her's last name-County-Lot Number-Class Number-Entry Number." The single root folder will be labeled with the same information. Images will be contained inside this folder. Example folder name: Doe-Fayette-6026-687a-24531
 - b. Each image will be .jpg format, 1920X1080 pixels. Vertical or horizontal black bars may be present to allow for cropped images.
 - c. Each image will have a filename that matches the following: "last-name-county-#.jpg," where "#" indicates the number of the image inside the folder. Example filename: Doe-Fayette-1.jpg
 - d. Each image will include a 400X225 pixel (or larger if necessary), white notation box with important information about the photo. This notation field may be placed anywhere inside the image, including inside black bars (if present). Fonts may vary based on the 4-Her's software, but we recommend Ariel, 18pt, black, non-bold. The notation field will include the following information, with one space between each line:
[4-Her's Name, County, Lot Number, Class Number]
[Date of original photograph]/[Location of original photograph. Location may be in the form of a street/city/zip code address or GPS coordinates.]

[Brand and type of camera or camera phone]
[Settings, including type of lens, relevant camera settings, and "flash" or "no flash"] [Insect Order – Common Name]

1. First year entomology photography exhibits are judged on the following categories: Orders, Species, Common Names, Labels, Quality of Photograph. Check with county 4-H Agent for point distribution on score sheet.
 2. Digital insect collections will be penalized if they:
 - a. Consist of images that were created by someone other than the 4-Her
 - b. Are not submitted and labeled according to guidelines
 3. No extra credit will be given for photographs submitted beyond the numbers listed in the current project books.
- 688C CLOVERBUD Bug Mobile – Design and Build your own bug mobile by creating your own bugs.
- 688 Second year project (Up to three 9" x 13" official cardboard boxes, or up to two 18" x 24" wooden boxes, with minimum of eight orders and not less than 50 insects, nor more than 100 insects.) Half of the insects should be identified with a common name.
- 688B Second year project (40-50 photographs total, representing 2 kinds of insect eggs, 8 nymphs, 8 larvae, 2 pupae, and a minimum of 20, maximum of 30, images showing insect adaptations and/or behaviors). Specifications for exhibits are the same as for 687A except:
- Each image will include a 400X300 pixel (or larger if necessary) white notation box with important information about the photo. This notation field may be placed anywhere inside the image, including inside black bars (if present). Fonts may vary based on the 4-Her's software, but we recommend Ariel, 18pt, black, non-bold. The notation field will include the following information, with one space between each line:

[4-Her's Name, County, Lot Number, Class Number]
[Date of original photograph]/[Location of original photograph. Location may be in the form of a street/city/zip code address or GPS coordinates.]
[Brand and type of camera or camera phone]
[Settings, including type of lens, relevant camera settings, and "flash" or "no flash"]
[Insect Order – Common Name (if applicable)]
[Brief description of life stage, behavior, or adaptation]
 - Second year entomology photography exhibits are judged on the following categories: Identification, description of life stage, behavior, or adaptation, Labels, Quality of Photographs. Check with county 4-H Agent for point distribution on score sheet.
 - Identification to order is necessary for any nymphs, larvae, pupae, and adult insects in the project; common name identification is necessary for at least one-half of adult insects in the project.
 - No images from the first-year insect photography may be reused for this project.
- 689C CLOVERBUD Insect or Spiders – Design and make your own insect or spider.
- 689 Third year project (Three 9" x 13" official cardboard boxes, or two 18" x 24" wooden boxes, with a minimum of 10 orders and 100 insects, a maximum of 150 insects.)
- 690C CLOVERBUD Butterfly – Design and make your own butterfly using tissue paper.
- 690 Fourth year project (Three 9" x 13" official cardboard boxes, or two 18" x 24" wooden boxes, with minimum of 12 orders and 150 insects, no maximum) An additional cardboard or wooden box with an example of insect damage, the stage of the insect causing the damage and any other stage of the insect that helps identify the problem. Include information in the display that tells how the insect is controlled. Life cycle of two insects may be displayed if desired.
- 691C CLOVERBUD Bird Collection – Make a notebook using photographs, drawings, and pictures you colored. Label what type of Bird it was on each page.
- 691 Fifth year project (may be repeated for successive years of eligibility but must be a different exhibit. No exhibit that has been judged in any previous State Fair may be entered.) Any type of display that pertains to experiences beyond those of previous projects. Special collections of native and/or exotic butterflies, beetles to some other insect order; a study in depth of one insect or small group of insects:



a display of insect camouflage: a display of plastic embedded insects: a collection of insect larvae and nymphs are examples. Charts, photographs, models or any other visual aids may be used. 4-H'ers are encouraged to write a short (1 or 2 paragraphs) statement developing the theme of their fifth year display.

HIVES and HONEY

Honey will show better in oval, flat sided to square clear glass containers. 4-H'ers should use standard Queenline or Classic honey jars. Mason jars are not ideal for entering honey because of the cast-in decoration. The jars and lids must be **clean**. **Fill jars to the "fill line"**. **The "fill line" is the continuous ring that circles the jar and not necessarily the threads that help hold the lid.**

Note: Two jars must be submitted for the following classes.

Display cases for capped honey may be made by 4-H'ers or bought from a store but, they must be bee-proof and have a removable top in order for the judge to check moisture. One frame per container.

Observation hives shall be secure from opening to the satisfaction of the superintendent. This shall include the top of the observation hive and all holes and openings. Openings should be secure by screws or locks. Observation hives may be picked up after the end of judging on Tuesday of the fair.

Class No.

- 692 **Two one pound** glass Queenline or Classic jars **of white extracted honey**
- 693 **Two one pound** glass Queenline or Classic jars **of light amber extracted honey**
- 694 **Two one pound** glass Queenline or Classic jars **of amber extracted honey**
- 695 **Two one pound** glass Queenline or Classic jars **of dark amber extracted honey**
- 696 **Two wide mouth** pints or Classic jars **of chunk honey, any color**
- 697 Any frame of capped honey suitable for comb honey (Light)
- 698 Any frame of capped honey suitable for comb honey (Amber)
- 699 Any frame of capped honey suitable for extraction (Light)
- 700 Any frame of capped honey suitable for extraction (Amber)
- 701 Best display of **one-frame** observation hive of honey bees consisting of worker bees, a properly-marked queen, and brood.

DIVISION 6027 - 4-H FORESTRY

1. See General Rules applying to all 4-H Exhibitors and general rules applying to all exhibits other than livestock listed previously in this catalog.
2. Only one entry per 4-H member permitted in the Forestry Division.
3. Exhibitors are not to exceed the number of specimens listed for each class. If an exhibitor exceeds these numbers, the entry will be judged for blue, red and white ribbons, but will not be considered for top awards. If exhibit contains less than the correct number, it will be disqualified.

FIRST YEAR:

Class No.

- 703 Leaf Collection - Collection of 10 leaves representing 10 forest trees found in Kentucky. Mounting instructions in the forestry book, "4-H Forestry Project Unit I - Introducing Yourself to Trees" **(4DF-01PA or most recent version)** Activity #1 are to be followed.
- 704 Leaf Print Collection - Collect and print 10 leaves representing 10 forest trees found in Kentucky. Instructions in the forestry book, "4-H Forestry Project Unit I - Introducing Yourself to Trees" **(4DF-01PA or most recent version)** Activity #3 are to be followed.

SECOND YEAR:

Class No.

- 705 Leaf Collection-2nd year - Collection of 20 leaves representing 20 forest trees

and found in Kentucky. Mounting instructions in the forestry book, "4-H Forestry Project Unit I - Introducing Yourself to Trees" **(4DF-01PA or most recent version)** Activity #1 are to be followed.

- 706 Educational Exhibit - Develop a creative educational exhibit on some phase of forestry. The exhibit may utilize any visual technique. The total exhibit is not to exceed dimensions of 2' x 2', or four (4) square feet.

THIRD YEAR AND OVER:

Class No.

- 707 Educational Exhibit - Develop a creative educational exhibit on some phase of forestry. The exhibit may utilize any visual technique. The total is not to exceed dimensions of 3'x3', or nine (9) square feet.
- 708 Stem, Leaf, Fruit display - Collect and mount 5 stems, leaves and fruit representing 5 forest trees found in Kentucky. **Follow closely the instructions in the forestry book**, "4-H Forestry Project Unit I - Introducing Yourself to Trees" **(4DF-01PA or most recent version)** Activity #2 is to be followed, including the 2' x 3' **exact** size.
- 709 Leaf Collection-3rd-year - Collection of 50 leaves representing 50 forest trees found in Kentucky. Mounting instructions in the forestry book, "4-H Forestry Project Unit I - Introducing Yourself to Trees" **(4DF-01PA or most recent version)** Activity #1 are to be followed.

DIVISION 6028 - GEOLOGY

1. See General Rules applying to all 4-H Exhibitors and general rules applying to all exhibits other than livestock listed previously in this catalog.
2. Only one entry per 4-H member permitted in Geology.
3. 4LO-11S0 Identification Card should be securely attached to the lower right hand corner of the front of the box. **Leave room to accommodate this ID Card.**
4. Display boxes must be no less than 16" no more than 20" vertically and no less than 22" no more than 24" horizontally.
5. All boxes must have Plexiglas cover that can be easily removed for judging.
6. Each exhibit must be secured with a lock. Attach a key to box with your name and county firmly attached to key. Keep another key in case this key is misplaced.
7. Hinges and Locks: Make flush or mount on sides or top of boxes so boxes will sit level.
8. Fabric: If fabric is used, use a fabric glue to adhere entire piece of fabric to box. Suggested fabrics are felt or velveteen.
9. Rocks, Minerals, and Fossils: Should be firmly attached to the box, and should be numbered to correspond with the number on the Geology Identification Labels. See Rule 11 for label information.
10. Boxes will be displayed on their side, not flat. Therefore, larger specimens must be attached near the lower portion of the box.
11. Geology Identification Labels are available from KY Geological Survey website (<http://www.uky.edu/KGS/education/4H.htm>). These are the only labels acceptable.
12. Exhibits will be disqualified for class champion if:
 - a. Box does not fit in the size stated in rule 5
 - b. Box contains too few or too many specimens
 - c. Box does not have a Plexiglas cover that can be opened
 - d. Labels not correctly filled out.
 - e. Specimen is mounted jewelry
 - f. Specimen is mounted and polished
 - g. Specimen and label are not numbered
 - h. Specimens are not arranged in numerical order
 - i. Duplicate specimens are used to reach minimum number. However, varieties of the same rock or mineral are acceptable if the specimen is identified by a different name (i.e., quartz, smoky quartz, amethyst, agate, chert, flint or calcite, Iceland spar, aragonite, travertine). Also acceptable if the duplicate specimen has an adjective in front of the specimen (i.e., calcite, red calcite, or limestone, fossiliferous limestone, oolitic limestone). If each entry in that class has duplicate

- named specimens, then each entry may qualify for class champion, but will not be eligible for grand champion.
13. The following score card will be used to judge geology exhibits:
- Correct identification and labeling - 5 points for each specimen. (Collections will be judged more favorably that have different types of specimens, rather than many different varieties of the same rock, mineral, or fossil; i.e., gray limestone, light gray limestone, dark gray limestone, or red calcite, blue calcite, green calcite).
 - Cards/specimen: 1 point each that each specimen has the label completely filled out, along with specimen number,
 - Found on site: Since this is an exercise in becoming familiar with rocks, minerals, and fossils, an extra 1 point will be given for specimens that are found rather than purchased or given as gifts. (Be sure to ask permission if you have to enter private property. The Internet is a good place to search for rock clubs and geological surveys of your and other states for information on collecting localities.
 - Neatness, arrangements, background - 20 points for total exhibit.
14. 4-H'ers entering fifth year and up cannot enter the same exhibit that has been judged in any previous State Fair.

For each of the classes, specimens may consist of rocks, minerals, and or fossils. There is a separate label for rocks, minerals, and or fossils (three different labels).

Class No.

- 715 First year geology - consisting of 15 different specimens.
- 716 Second year Geology - consisting of 25 different specimens (up to 12 may be from previous project year) (no more than 2 boxes)
- 717 Third Year Geology - consisting of 35 different specimens (up to 17 may be from previous project year) (no more than 2 boxes)
- 718 Fourth Year Geology - consisting of 50 different specimens (up to 25 may be from previous project year) (no more than 2 boxes)
- 719 Special collection for fifth year or more members - creative, advanced display of member's choosing which depicts a geological process, theme, story, or manufacturing process. Posters, notebooks and written narratives may be included.

DIVISION 6029 – 4-H ARTS & CRAFTS

1. See General Rules applying to all 4-H Exhibitors and general rules applying to all exhibits other than livestock listed previously in this catalog.
2. All classes are from Portfolio Pathways (Section A) and Sketchbook Crossroads (Section B) 4-H Core Curriculum except for Trends and Heritage Crafts.
3. **Seniors must submit an artist statement.** Please write a paragraph minimum about your piece of art. Please include the following information typed and attached to your piece of art.
- Name
 - Fair Entry Class
 - Title of Work
 - Medium (What is it made of?)
 - Explanation of where you got your inspiration or ideas from in creating this work
 - Explanation of elements and principles of design that pertain to your work
 - What kind of message were you trying to communicate to the viewer (mood, feeling, emotion, etc.)?
 - How does this represent you as an artist?

4. **Each Exhibitor may enter only two (2) classes per Sections A, B, and C per year.**

5. Tags (4LO-11SO) must be attached to the lower right front corner of paintings, drawings, etc. For all other exhibits, neatly secure the ID card where it can be seen when displayed. For items with more than one piece, a description on the

back of the ID card is suggested with number of pieces, color, etc. In addition, label each item in an inconspicuous location with name and county (clothing label 4LO-12SO may be utilized)

6. Appropriate hangers for project work is any hardware permanently attached to the project that can be displayed on a metal grid work wall via metal S hook, binder clip, or zip tie. Mat board can be displayed utilizing binder clips while stretched canvas can be displayed using S hooks.
7. Small items, which are easily separated or destroyed, may be placed in small plastic bags. For items with more than one piece, a description on the back of the ID card is suggested with the number of pieces, color, etc. In addition, label each piece in an inconspicuous location with name and county (clothing label 4LO-12SO may be utilized).

SECTION A: PORTFOLIO PATHWAYS

PAINING:

Class No.

- 727a Junior Acrylic Still Life: (pg.12) Using acrylic paint to create a Still Life.
- 727b Senior Acrylic Still Life: (pg.12) same as Junior.
- 727C CLOVERBUD decorated plate - decorate a plate with your hand print or original work using acrylic paint and construction paper.
- 728a Junior Water Color: (pg.14) Using watercolors and a variety of techniques to complete a painting on watercolor paper.
- 728b Senior Water Color: (pg. 14) same as Junior.
- 729a Junior Abstract: (pg.18) Using acrylic paints experiment with abstract designs to complete a painting.
- 729b Senior Abstract: (pg. 18) same as Junior
- 730a Junior Sand Painting: (pg.20) On an 8"x10" x1/4" sanded plywood or particle board. Explore painting with colored sand mixed with glue.
- 730b Senior Sand Painting: (pg.20) same as Junior.
- 731a Junior Self Portrait: (pg.22) Using acrylic or watercolor paints. Complete a self-portrait using any drawing or painting technique.
- 731b Senior Self Portrait: (pg. 22) same as Junior.
- 732a Junior Human Action: (pg.24) Using acrylic or watercolor paints, capture human action through the use of vivid colors, lines, and texture when painting.
- 732b Senior Human Action: (pg.24) same as Junior.
- 733a Junior Oil Painting: (pg.26) Using oils on canvas or canvas board. Experiment with different techniques of laying oil to canvas to create a finished painting.
- 733b Senior Oil Painting: (pg.26) same as Junior.
- 734a Junior Oil Landscape: (pg.30) On a 16"x18" stretched and primed canvas, canvas board or sheet of Masonite coated in gesso. Lay out a one -point landscape perspective drawing and use oil paints to show atmosphere and distance.
- 734b Senior Oil Landscape: (pg.30) same as Junior.

PRINTING:

Class No.

- 735a Junior Intaglio Collagraph Print: (pg.38) On 8 ½" x 11" paper. Create a collagraph block at least 6" wide and create any color print using intaglio printing method.
- 735b Senior Intaglio Collagraph print: same as Junior.
- 736a Junior Blueprint Paper Print: (pg.40) On blueprint paper create a sun print; at least 5 ½ x 8 ½ in. using cyanotype or Light or sun sensitive paper.
- 736b Senior Blueprint Paper Print: same as Junior.
- 737a Junior Etched Plexiglas: (pg. 42) Create an original print using an etched Plexiglas plate. The print should be at least 5 ½"x 8 1/2" in. Plexiglas etching uses the intaglio method of printing.
- 737b Senior Etched Plexiglas: same as Junior.
- 738a Junior Wax Resist Print: (pg.44) Create intricate designs for printing using a wax resist method.
- 738b Senior Wax Resist Print: same as Junior.
- 739a Junior Tire Stamp Print: (pg.46) Cut pieces of inner tube tire, glue it onto a wood block, and print using a stamp pad.
- 739b Senior Tire Stamp Print: same as Junior.



- 740a Junior Linoleum Print: (pg.48) Create linoleum print using linoleum block on paper.
- 740b Senior Linoleum Print: same as Junior
- 741a Junior Hand Drawn Negative Photograph: (pg.51) You will draw a negative on frosted acetate, then print onto photographic paper (8"x10" in.) as a positive, using a photographic process.
- 741b Senior Hand Drawn Negative Photograph: same as Junior.

GRAPHIC DESIGN:

Class No.

- 743a Junior 5 Color Design: (pg.62-63) Create (2) two 8"x 10" in. landscapes. 5 color designs are identical except for (1) one color. Change (1) one color to create a second design. Use paint, paper or computer graphics program. Mount on a matt board.
- 743b Senior 5 Color Design: same as Junior
- 744a Junior Computer Drawing: (pg.70) Explore the use of computer tools and techniques to doodle, draw and replicate images. Print out each design showing the use of various tools.
- 744b Senior Computer Drawing: same as Junior.

SECTION B: SKETCHBOOK CROSSROADS

DRAWING:

Class No.

- 745a Junior Contour Drawing: (pg.12) Draw objects using the contour drawing method. Do 2-3 drawings of the same object from different angles.
- 745b Senior Contour Drawing: same as Junior
- 746a Junior Two Point Perspective: (pg. 16) On sketch paper, draw a two point perspective that has a point at each end of a horizontal segment.
- 746b Senior Two Point Perspective: same as Junior.
- 747a Junior Circular Shape Object: (pg.18) Draw a subject to fit a circular shape.
- 747b Senior Circular Shape Object: same as Junior.
- 748a Junior Color Pencil: (pg.20) Draw with colored pencils and use turpenoid to blend the colors.
- 748b Senior Color Pencil: same as Junior.
- 749a Junior Pen and Ink: (pg.22) Sketch animals or other objects using pen and ink.
- 749b Senior Pen and Ink: same as Junior
- 750a Junior Calligraphy: (pg. 24) On 8 ½ by 11 paper, rewrite a quote, poem or pledge using Calligraphy. Make sure to include the author on the piece.
- 750b Senior Calligraphy: Same as Junior
- 751a Junior Cartooning: (pg.27) Cartooning is a simple process of making line drawings show sequential motion. Create your own cartoon character showing motion. Must create at least three blocks.
- 751b Senior Cartooning: same as Junior.

FIBER ARTS:

Class No.

- 752a Junior Felted Wool Applique Mat: (pg31) Felt wool to create a design. Applique design to a felted wool mat. Max size of mat 18" x 24" in. Use 100% wool to felt.
- 752b Senior Felted Wool Applique Mat: same as Junior.
- 753a Junior Cotton Linter Bowl: (pg. 34) Experiment with cotton linter using molds and shaping the linter to form bowls. Enhance the cotton with colored pencils, threads, floss, dried flowers to make a unique creation.
- 753b Senior Cotton Linter Bowl: same as Junior.
- 754a Junior Batik Fabric: (pg.37) Using natural fiber fabric. Create a unique fiber artwork using dyes and the wax resist method.
- 754b Senior Batik Fabric: same as Junior.
- 755a Junior Lap Loom Woven Place Mat: (pg.40) Set up a lap Loom. Using several colors or types of yarn create a woven placemat.
- 755b Senior Lap Loom Woven Place Mat: same as Junior
- 756a Junior Inkle Loom Basket: (pg.44) Weave 4-6 stripes that are identical. Sculpt a basket out of several woven strips by stitching them together in a spiral. Manip-

- ulate the strips to form the bottom of the basket.
- 756b Senior Inkle Loom Basket: same as Junior.

SCULPTING:

Class No.

- 757a Junior Clay Container: (pg.55) Create a functional container from clay either self-hardening or firing required.
- 757b Senior Clay Container: same as Junior.
- 757C CLOVERBUD Ceramics – Design and make your own animal with modeling clay.
- 758a Junior Clay Bust: (pg.57) Sculpt a head with facial features out of clay.
- 758b Senior Clay Bust: same as Junior
- 759a Junior Mask: (pg.61) Create a mask using clay emphasizing unique form and texture to portray feelings.
- 759b Senior Mask: same as Junior.
- 760a Junior Cardboard Sculpture: (pg.65) Create a piece of textured relief sculpture using corrugated cardboard stacked and glued together. Sculpt with an Exacto® knife.
- 760b Senior Cardboard Sculpture: same as Junior.
- 761a Junior Flower Wire Sculpture: (pg.67) Using wire and nylon cloth create a free-standing flower sculpture.
- 761b Senior Flower Wire Sculpture: same as Junior.
- 762a Junior Plaster of Paris Carving: (pg.69) Using a plaster of paris block, carve a form that has a concave and convex surface and allows space to flow around and through it.
- 762b Senior Plaster of Paris Carving: same as Junior. 758 Senior Black and White Drawing - same as above.

SECTION C: ART TRENDS AND TRADITIONS

This section will be highlighting the latest trends in art while honoring our heritage. Art trends will be selected every two years. Heritage arts will have specific areas as well as an "Other" category where youth may choose what they exhibit. Documentation for the Heritage Craft Classes is REQUIRED. If required documentation is not attached the item will be disqualified. You may enter two entries per year in this section.

TRENDS:

Class No.

- 763a Junior Art Trends – Mixed Media. Mixed media is defined employing more than one medium.
- 763b Senior Art Trends—Mixed Media

TRADITIONS:

Class No.

- 764a Junior Heritage Arts Other - See below for definition.
- 764b Senior Heritage Arts Other: same as junior.
- 764c Junior Basket Making – Natural materials, any size, shape, or design. Non-natural materials may be woven into design.
- 764d Senior Basket Making: same as junior.
- 764e Junior Jewelry – One piece of jewelry created by youth (Jewelry quality only). No kits or pony beads allowed. Glass, clay, or wooden beads (painted or carved) permitted only.
- 764f Senior Jewelry – One set (at least two items) of jewelry created by youth (Jewelry quality only). No kits or pony beads allowed. No elastic material used to string beads. Glass, clay, or wooden beads (painted or carved) permitted only. Note earrings (set) count as one item.
- 764g Junior Leather Craft – Item made from leather. May or may not be tooled. Kits allowed.
- 764h Senior Leather Craft – Item made from leather. May or may not be tooled. No kits allowed.

HERITAGE CRAFTS

According to various sources, heritage can refer to practices or characteristics that are passed down through the years, from one generation to the next. Kentucky 4-H believes

in celebrating one's heritage through recognition of crafts that may be representative of one's culture examples may be baskets, brooms, etc. To successfully enter Heritage Crafts the 4-H'er must create the Heritage Craft piece after the Daviess County Fair of the previous year. Details on this class can be obtained at the Daviess County Cooperative Extension Office.

Division 6030 – 4-H PHOTOGRAPHY

1. See General Rules applying to all 4-H exhibitors and general rules applying to all 4-H exhibits other than livestock listed previously in this catalog.
2. Specifications for exhibits:
 - a. All general photography classes are taken from 4-H Photography Core Curriculum (Focus on Photography, Controlling the Image, and Mastering Photography).
 - b. General photography (levels 1, 2 & 3): 4-H'ers can enter only 3 classes in any one level per year.
 - c. Horticulture photography: a 4-H'er may enter any of the classes in addition to general photography.
 - d. All pictures must be made since the last Daviess County Fair.
 - e. All classes (*including Horticulture*) with **ONE PHOTOGRAPH MUST BE MOUNTED ON WHITE 10" x 16" MAT BOARD** (no poster board or foam core board accepted). Single photographs are limited to up to a maximum size of 8" x 12". Pictures cannot be framed or matted with colored mat board.
 - f. All classes (*including Horticulture*) with **MULTIPLE PHOTOGRAPHS** (More than 1 photograph) **MUST BE MOUNTED ON WHITE 16" x 20" MAT BOARD** (no poster board or foam core board accepted). Pictures cannot be framed or matted with colored mat board. Mat board may be purchased at the Daviess County Cooperative Extension Office.
 - g. Each picture must be mounted securely. Rubber cement or dry mounting tissue is recommended. Do not use photo mounting corners.
 - h. Entries must use current identification tag securely mounted to front of the mat board in the **Lower right corner**. Note: Identification tag should NOT cover photo or hang over edge of the board.
 - i. If labels are required for pictures, it must be typed, on white paper, and placed directly below the photograph it is identifying.
 - j. Absolutely nothing on front of mat board except photographs and ID tag. Any other required materials are to be mounted on the back.
3. Appropriate hangers for project work is any hardware permanently attached to the project that can be displayed on a metal grid work wall via metal S hook, binder clip, or zip tie. Mat board can be displayed utilizing binder clips while stretched canvas can be displayed using S hooks.
4. Photography will be judged on, but not limited to: Technical, impact, composition, creativity, presentation, sequence or collection and the ability of the picture to tell a story.

LEVEL 1 FOCUS ON PHOTOGRAPHY- CLASS DESCRIPTIONS IN CURRICULUM: **CLASS NO.**

- 764a Fun with Shadows, pg. 22 Photograph shadows to create a mood or element of surprise. Two (2) photographs of shadow shapes
- 764b Fun with Shadows, pg. 22 Photograph shadows to create a mood or element of surprise. Display (3) photographs that show how the shadow of a subject can

"grow" or shrink over time.

- 764C CLOVERBUD Photography – Plants, pets and people.
- 765 Directing the Light, pg. 26 Four (4) Photographs. Using either natural or artificial light take photographs of subject with; Front lighting, Back lighting, Side lighting, and Top lighting (overhead).
- 766a What Do You See?, pg. 34 Landscape with foreground, middle ground, and background, labeled 1, 2, 3
- 766b What Do You See?, pg. 34 Landscape with a foreground object that frames the photograph
- 766c What Do You See?, pg. 34 Portrait of a person without background clutter
- 767a Bird's Eye View, pg. 46 Display one (1) photograph lying on your stomach
- 767b Bird's Eye View, pg. 46 Display one (1) photograph lying on your back
- 767c Bird's Eye View, pg. 46 Display one (1) photograph leaning over
- 767d Bird's Eye View, pg. 46 Display one (1) photograph bending sideways
- 768a Hat Tricks and Magic, pg. 50 Hat Trick: Have a plant growing out of the subject
- 768b Hat Tricks and Magic, pg. 50 Hand Stand: Have it look like someone is holding a person in their hand
- 768c Hat Tricks and Magic, pg. 50 Magic: Set up the photograph to look like a person is hanging from the ceiling
- 768d Hat Tricks and Magic, pg. 50 Bad Hair Day: Position a person to look like their hair is sticking straight up
- 769 Photos Can Tell a Story, pg. 58 A sequence of 3-5 photographs that tell a story. There should be a beginning, a middle and end.
- 770 Black and White, pg. 62 3-5 Black and White photographs that show texture, shape and composition. The interest is in the contrast, light and shadows.

LEVEL 2 CONTROLLING THE IMAGE-CLASS DESCRIPTION IN CURRICULUM: **CLASS NO.**

- 771a Golden Photo, pg. 38 Display one (1) photograph showing the Rule of Thirds
- 771b Golden Photo, pg. 38 Display one (1) photograph using the Golden Triangle
- 771c Golden Photo, pg. 38 Display one (1) photograph using the Golden Rectangle
- 772 The Space Tells a Story, pg. 46 Display 1 photograph that shows good use of positive and negative space.
- 773 Capture a Candid Photo, pg. 48 Create a candid collection (3-5) photos. Take photographs at a party, parade, sporting event or family reunion. Try to capture the emotions of the event.
- 774a Freeze the Moment, pg. 54 Display one (1) photograph using setting # 1 – Set shutter speed 1/250 to freeze action for a clear photograph.
- 774b Freeze the Moment, pg. 54 Display one (1) photograph using setting #2—set the shutter speed at 1/30
- 775a Panning the Action, pg. 58 Display one (1) photograph showing panning technique
- 775b Panning the Action, pg. 58 Display one (1) photograph showing blurring of motion
- 776 Bits and Pieces, pg. 62 Display one (1) photograph. Fill the frame with small parts of a whole subject. Choose bits and pieces for close-ups.
- 777 Panoramas, pg. 66 Take a series of photographs to create a panorama.

LEVEL 3 MASTERING PHOTOGRAPHY-CLASS DESCRIPTION IN CURRICULUM: **CLASS NO.**

- 778 Reflections, pg. 30 One (1) picture of a reflection as a subject
- 779a Still-Life, pg. 42 Display one (1) photograph that includes similar themes – arrange similar objects (food, toys, glassware) against a neutral background
- 779b Still-Life, pg. 42 Display one (1) photograph that includes similar colors – arrange items of similar colors (brown eggs, loaf of bread, cutting board, and brown crackers)
- 779c Still-Life, pg. 42 Display one (1) photograph that includes different lighting – use a colored light, light coming through blinds or faint light shining on clear vases or glasses
- 779d Still-Life, pg. 42 Display one (1) photograph that includes your interest – gather objects that are related in some way such as cooking tools, baseball equipment, books, etc.



- 780a Say "Cheese", pg. 46 Display one (1) formal portrait
 780b Say "Cheese", pg. 46 Display one (1) informal portrait
 781a Mastering Composition, pg. 50 Display one (1) photograph that shows symmetry vs asymmetry
 781b Mastering Composition, pg. 50 Display one (1) photograph that shows pattern and texture
 781c Mastering Composition, pg. 50 Display one (1) photograph that shows shape and form
 781d Mastering Composition, pg. 50 Display one (1) photograph that shows visual rhythms
 782a Expression Through Color, pg. 54 Display one (1) photograph that shows monochromatic color techniques
 782b Expression Through Color, pg. 54 Display one (1) photograph that shows contrasting color techniques
 782c Expression Through Color, pg. 54 Display one (1) photograph that shows complementary color techniques
 783 Details! Details!, pg. 58 Display three (3) to five (5) examples that highlight details in a subject you explored.
 784 Pictures With a Purpose, pg. 62 Display 2-3 photographs that could be part of a brochure. Include words that market the product, event or the organization.
 785 How Did They Get That Picture? pg. 66 Display 3-5 Photographs taken with advanced or specialized equipment.

HORTICULTURAL PHOTOGRAPHY EXHIBITIONS

Horticulture is the science, art, technology and business concerned with intensively cultivated plants that are used by people for food, for medicinal purposes, and for aesthetic gratification.

Horticulture is divided into two categories:

The cultivation of plants for food (pomology and olericulture):

1. Pomology deals with fruit and nut crops. (not included in photography classes)
2. Olericulture deals with herbaceous plants for the kitchen, including, for example, carrots (edible root), asparagus (edible stem), lettuce (edible leaf), cauliflower (edible flower), tomatoes (edible fruit), and peas (edible seed). (included in photography classes)

Plants for ornament (floriculture and landscape horticulture).

1. Floriculture deals with the production of flowers and ornamental plants; generally, cut flowers, pot plants, and greenery. (included in photography classes)
2. Landscape horticulture is a broad category that includes plants for the landscape, including lawn turf, but particularly nursery crops such as shrubs, trees, and climbers. (not included in photography classes)

For the purposes of the Kentucky 4-H Horticulture Photography Contest, only photographs representing the areas of Olericulture and Floriculture will be accepted.

NJHA Contest: Entries in the following classes may also participate in the National Junior Horticulture Association Photography Exhibition. It is the responsibility of the individual to submit all required entry forms and follow all rules set out by NJHA organization to participate. States are not limited in the number of entries. See web site for details: www.njha.org

HORTICULTURAL PHOTOGRAPHY :

CLASS NO.

- 786 Single black and white. Horticultural subject or activity. (Maximum size: 8" x 12")
 787 Single color. Horticultural subject or activity. (Maximum size: 8" x 12")
 788 Sequence of 4 photographs. B&W or Color representing a horticultural event or activity that tells a visual story, chronologically, without the use of words.
 789 Horticulture collection (B&W or color), consisting of 6 photographs.

DIVISION 6032 - 4-H SEWING

1. See General Rules applying to all 4-H Exhibitors and general rules applying to all exhibits other than livestock listed previously in this catalog.
2. **Classes in Division:** Junior Classes 790A-799B; Senior Classes 800-810.
3. A member may enter up to two classes in their age division in the Sewing Division.
4. Items must be "handmade"; no ready-to-wear/factory made items will be accepted for judging.
5. Items must be **CLEAN**, however it is permissible for garment to show wear.
6. Articles of clothing for "Clothing Option" classes are to be made by and constructed for the 4-H member to wear. Doll clothing does not meet the requirement for Clothing Option classes.
7. Send **NO additional** accessories or undergarment with any sewing entry unless it was constructed as a part of the project.
8. Specific number of items: In classes where there is to be a specified number of articles exhibited and the entry contains more, the 4-H'er will be asked to make the decision on which item(s) are to be judged. In those cases where the situation was not discovered before entry was made, the article(s) to be judged will be left to the discretion of the judges.
9. Complete outfit: The definition of a "complete outfit" is an item or items that cover the top and bottom of the body. To be considered a top, a jacket or robe, it must include a front closure. Open front tops that require an under shirt do not count as a complete outfit unless the under shirt is also constructed by the member.
10. Labeling: A small label (4LO-12SA) should be safety pinned to the inside of each article. Do not use straight pins.
11. Additional Documentation Required:
 - a. 4-H Sewing Project Card: no longer required.
 - b. Documentation is required only in Junior Unit VI non-clothing option and Up Cycle Jr & Sr, and Smart Clothing Jr & Sr projects.
 - i. Documentation may be handwritten or printed by computer on 8.5" X 11" paper.
 - ii. Insert documentation into an inexpensive folder or plastic sheet protector. Attach it to the item using a safety pin or binder clip.

JUNIOR DIVISION FOR 4-H'ERS AGES 9-13

Junior members may complete the projects in any order and may repeat a level more than one year. The curriculum includes instructions for making "practice" items; the practice items do not fit in classes in the Clothing Division.

UNIT I – LET'S LEARN TO SEW: BEGINNER SKILLS; See Publication: <http://www.ca.uky.edu/agc/pubs/4jd/4jd01pb/4jd01pb.pdf> , pages 3-20 and 55-56.

Class No.

- 790A Unit I Clothing Option: Shorts, pants, or skirt with casing waistline (elastic and/or drawstring). Garment must be made from woven fabric and include the following: straight machine stitching, appropriate visible seam finish, and machine stitched hem. This class is for ages 9-13.
- 790B Unit I Non Clothing Option: Apron or drawstring backpack/shoulder bag OR tote bag with fabric handles OR a laundry bag. Item must be made from woven fabric and include the following: straight machine stitching, appropriate visible seam finish, and a casing or machine stitched hem. Practice projects (travel kit and tissue holder) are not to be entered. This class is for ages 9-13.
- 790C CLOVERBUD Fringed Scarf – Cut a fringe on the end of a scarf demonstrating your cutting and measuring skills.
- 790.1C CLOVERBUD Sit Upon – Make a pad using vinyl, newspaper, and yarn to use when sitting on the ground, bleachers, etc. Directions are available from the Daviess County Extension Office.

UNIT II – LET'S GET TO THE BOTTOM: BEGINNER SKILLS; See Publication: <http://www.ca.uky.edu/agc/pubs/4jd/4jd01pb/4jd01pb.pdf> , pages 21-38 and 55-56.

Class No.

- 791 Unit II Clothing Option: Skirt, shorts or pants. Exhibit must be made from woven

RICK'S TIRE & SERVICE

2727 Veach Rd.

(270) 685-3272

Tires

Brakes

Alignments

Motorcycle Tires

Accessories

Oil Changes

Spray on Bed Liners



Owner - Rick A. Durbin



WILKERSON

PLASTERING & ACOUSTICS, INC.

Acoustics • Ceilings
Metal Studs • Drywall

Plastering • EIFS
Painting • Flooring



Raymond Smith
300 Lucas Ave.
Owensboro, KY 42301

Ofc (270) 926-8170
Fax (270) 683-5795
raymond@wilkersonpa.com



©2009-2018 Messenger-Inquirer. All Rights Reserved

HAYDEN ELECTRIC, INC.

Your Hometown Electrical Contractor

Serving the Area Over 50 Years

**P.O. Box 129
Philpot, KY 42366**

270-281-4765

Fax: 270-281-4760



VORTEX

AIR

(270) 315-2520

792 fabric and include the following: enclosed seams, appropriate seam finish, interfacing, zipper, and a facing or waistband. This class is for youth ages 9-13.
Unit II Non Clothing Option: Zippered tote bag, purse, garment bag, or duffel/gym bag. Exhibit must be made from woven fabric and include the following: enclosed seams, appropriate seam finish, interfacing, and 14" or longer zipper. (Pre-quilted woven fabric and recycled woven fabric are acceptable fabric choices but use is not required.) Practice projects (book cover, zippered travel bag) are not to be entered. This class is for youth ages 9-13.

UNIT III – TOP IT OFF: BEGINNER SKILLS; See Publication: <http://www.ca.uky.edu/agc/pubs/4jd/4jd01pb/4jd01pb.pdf> , pages 39-52 and 55-56.

Class No.

793 **Unit III Clothing Option:** Shirt, simple jacket, one piece dress with no waistline, cape with a hood or collar, bathrobe, or vest with lining or facing. Garment must be made from woven fabric and include the following: buttons and buttonholes. A simple lining, trim, collar, and sleeves may be included but are not required. This class is for youth ages 9-13.

794 **Unit III Non Clothing Option:** Backpack with lining, applied trim, and button/buttonhole closure. Practice projects (hanger cover, pillow case with button closure, gift bag) are not to be entered. This class is for youth ages 9-13.

UNIT IV – STRETCH YOUR KNIT SKILLS: BEGINNER SKILLS; See Publication: <http://www.ca.uky.edu/agc/pubs/4jd/4jd01pb/4jd01pb.pdf> , pages 45-48 and 55-56.

Class No.

795 **Unit IV Stretch Your Knit Skills:** 1 or 2 piece complete outfit made from knit fabric; such as a dress, top and bottom, pajamas, or nightshirt. All garment pieces must be made from knit fabric with a limited amount of one-way stretch; rib knit may be included for neckband and arm/leg band trim only. This class is for youth ages 9-13.

UNIT V – MOVING ON UP: INTERMEDIATE SKILLS; See publication: http://4-h.ca.uky.edu/sites/4-h.ca.uky.edu/files/junior_unit_v_moving_on_up.pdf

Class No.

796 **Unit V Moving on Up:** one-piece complete outfit made from woven fabric; such as a dress, coveralls, or jumpsuit. Item must include at least a zipper and/or buttons and buttonholes. A waistline simple lining, trim, collar, and sleeves may be included but are not required. This class is for youth ages 9-13.

UNIT VI – PUT IT ALL TOGETHER; See Publication: <http://www.ca.uky.edu/agc/pubs/4jd/4jd01pb/4jd01pb.pdf> , pg. 49-56.

Class No.

797 **Unit VI Put It All Together Clothing Option:** 2 or 3 piece complete coordinating outfit; such as warm up suit; dress with jacket or coat, swimwear with cover-up, jacket or shirt with slacks/ skirt. *At least one piece must include sleeves and a collar/hood.* No simple casings. Fabric choice may be woven, knit or a combination of the two. *This class is for ages 9-13.*

798 **Unit VI Put It All Together Non Clothing Option:** Original design tote bag or bicycle carrier and documentation folder – made using Wild Ginger Software, Inc. **Wild Things!** Software program, download free at: <https://www.wildginger.com/products/wildthings.htm>. Select the "Tote Bag" or "Bicycle Carrier" option and design a bag that includes at least 2 pockets. Be creative with your design. Required elements: at least 2 pockets; minimum size of 12 inches in height and 12 inches in width. Item must have at least one functional zipper; and creative stitchery or applied trim to personalize your bag. If bag is not lined, the seam allowances must be finished with a bound seam finish. Optional elements: lining, other type closure as design dictates [button(s), hook and loop tape, or snap(s)]. This class is for ages 9-13. **In the documentation include:** your name, your county, the name of the unit, class entered, number of years you have been sewing, cost, and the printed design sheets (one for each pocket selected) from

the program, and answers to the following questions:

1. How did you choose the size of your tote bag? Did you use any of the default settings in the program?
2. Did you have any trouble using the software or printing your pattern? Explain
3. Did you download the Wild Things! Program to your home computer or use the program at your county extension office?
4. Did you make any changes to your pattern after it was printed? If so, tell what you changed.

UNIT: UP CYCLE IT!—FOR YOUTH AGES 9-13 WITH ADVANCED SEWING SKILLS; See publication: https://4-h.ca.uky.edu/sites/4-h.ca.uky.edu/files/upcycle_project_jr_and_sr.p

Class No.

799A **Up Cycle It! Junior**—item sewn from recycled/repurposed garments and documentation folder: Sew a garment or fashion accessory from previously worn garments. Recycled fabric is to be the major component of the item. Recycled garments may be cast-offs from the member's family/friends or purchased at a yard sale or similar low cost source. **Documentation is required.** In documentation include the following: your name, your county, the name of the unit, class entered, number of years you have been sewing; a **"before" photo** of all recycled items used; source of the recycled garment; how the design was created; and any design drawings that were used in the creation. Place documentation in a folder or plastic sheet protector. "Deconstructed" t-shirts which do not include sewing skills do not fit this class. Items for the home do NOT fit this class. Items which do not include sewing as a major means of reconstruction are not eligible for this class. See publication. This class is for ages 9-13 with sewing skills.

UNIT: STYLE ENGINEERS – FOR GUYS AND GIRLS AGES 9-13; See website: <http://styleengineers.org/module/smart-clothing/>

Class No.

799B **Smart Clothing and documentation:** One soft circuit item created using conductive thread and hand sewing and/or machine sewing skills, LEDs, and battery pack. May include items such as an LED bracelet, an illuminating fashion applique, an illuminating fashion accessory, or an illuminating garment constructed by the member. This class is for ages 9-13. Documentation: Attach a diagram of the circuitry in your item. Website: <http://styleengineers.org/module/smart-clothing/>.

Senior Division for 4-Hers, age 14-18

Senior members may complete the projects in any order and may repeat a level more than one year.

UNIT: LET'S BE CASUAL- FOR AGES 14-18. (Ask your county 4-H agent for a copy or see publication: http://4-h.ca.uky.edu/sites/4-h.ca.uky.edu/files/senior_unit_1_a_lets_be_casual.pdf)

Class No.

800 **Let's Be Casual--Clothing Option:** 1 or 2 piece complete outfit made from knit or woven fabric such as a dress, top and bottom, simple pajamas, or robe. This class is for ages 14-18.

801 **Let's be Casual--Non Clothing Option:** 2 coordinating fabric accessories from the following: apron, oven or BBQ mitt, wallet, garment bag, purse, backpack or duffel bag. This class is for ages 14-18.

UNIT: DRESS IT UP- FOR AGES 14-18. (Ask your county 4-H agent for a copy or see publication: https://4-h.ca.uky.edu/sites/4-h.ca.uky.edu/files/senior_unit_1_b_dress_it_up_0.pdf)

**Class No.**

802 Dress It Up--1 or 2 piece complete “dressy” outfit, such as a dress, suit, pantsuit, sport coat and slacks. Fabric choice may be woven, knit or a combination of the two. This class is for ages 14-18.

UNIT: MATCH IT UP- FOR AGES 14-18. (Ask your county 4-H agent for a copy or see publication: https://4-h.ca.uky.edu/sites/4-h.ca.uky.edu/files/senior_unit_1_c_match_it_up.pdf)

Class No.

803 Match It Up--Clothing Option: Choose at least one item from each group to make a complete 3 or 4 piece coordinated outfit:

- Shorts, pants, or skirt
- Top, blouse, or shirt
- Vest, jacket, or sweater

At least one piece is required to have regulation set in sleeves. Fabric choice may be woven, knit or a combination of the two. An accessory item may be included as the fourth piece. This class is for ages 14-18.

804 Match It Up--Non Clothing Option: 3 or 4 piece coordinating sport/luggage/travel or fashion accessories set. Ideas include, but are not limited to: wallet, purse, device carrier, backpack, duffel bag, gym bag or bag for bike or vehicle. Among the items chosen, the set must include the use of applied trim, pockets, and at least one 14” or longer zipper. This class is for ages 14-18.

Unit: Creative Expressions- for ages 14-18. (Ask your county 4-H agent for a copy or see publication: https://4-h.ca.uky.edu/sites/4-h.ca.uky.edu/files/senior_unit_1_d_creative_expressions.pdf)

Class No.

805 Creative Expression--Clothing Option: Construct a complete outfit for one of the following activities:

- Halloween, theater, or historic costume
- Uniform for medical profession, cheerleader, dancer, etc.
- Riding apparel

This class is for ages 14-18.

806 Creative Expression--Non Clothing Option: Select one of the following and construct a:

- Fabric doll or animal with a wardrobe of two outfits
- Machine appliquéd specialty flag or decorative banner (minimum size 24 inches x 24 inches)

THIS CLASS IS FOR AGES 14-18.

UNIT: LEISURE TIME- FOR AGES 14-18 WITH ADVANCED SKILLS. (Ask your county 4-H agent for a copy or see publication: https://4-h.ca.uky.edu/sites/4-h.ca.uky.edu/files/senior_unit_2_a_leisure_time_1.pdf)

Class No.

807 Leisure Time--Clothing Option: 2 or 3 piece complete outfit. Choose from the following:

- Athletic wear such as leotard, cycling wear, warm-up suit, bathing suit and cover-up, tennis wear
- Pajamas and robe (must use specialty fabric such as terry cloth, flannel, fleece, nylon tricot)
- Raincoat and hat or rain suit

This class is for ages 14-18.

UNIT: FORMAL AFFAIR- FOR YOUTH AGES 14-18 WITH ADVANCED SKILLS. (Ask your county 4-H agent for a copy or see publication: https://4-h.ca.uky.edu/sites/4-h.ca.uky.edu/files/senior_unit_2_b_formal_affair_2.pdf)

Class No.

808 Formal Affair--1 or 2 piece complete outfit, such as a prom dress, bridesmaid dress, or tuxedo. Fabric choice may be woven, knit or a combination of the two. This class is for ages 14-18.

UNIT: UP CYCLE IT!—FOR YOUTH AGES 14-18 WITH ADVANCED SEWING SKILLS; See publication: https://4-h.ca.uky.edu/sites/4-h.ca.uky.edu/files/upcycle_project_jr_and_sr.pdf

Class No.

809 Up Cycle It! Senior—item sewn from recycled/repurposed garments and documentation folder: Sew a garment or fashion accessory from previously worn garments. Recycled fabric is to be the major component of the item. Recycled garments may be cast-offs from the member’s family/friends or purchased at a yard sale or similar low cost source. **Additional documentation is required.** In documentation include the following: your name, your county, the name of the unit, class entered, number of years you have been sewing; a “**before**” photo of all recycled items used; source of the recycled garment; how the design was created; and any design drawings that were used in the creation. Place documentation in a folder or plastic sheet protector. “Deconstructed” t-shirts which do not include sewing skills do not fit this class. Items for the home do NOT fit this class. Items which do not include sewing as a major means of reconstruction are not eligible for this class. See publication. This class is for ages 14-18 with sewing skills.

UNIT: STYLE ENGINEERS – FOR GUYS AND GIRLS AGES 14-18; See website: <http://styleengineers.org/module/smart-clothing/>

Class No.

810 Smart Clothing and documentation: One soft circuit item created using conductive thread and hand sewing and/or machine sewing skills, LEDs, and battery pack. May include items such as an LED bracelet, an illuminating fashion applique, an illuminating fashion accessory, or an illuminating garment constructed by the member. This class is for ages 14-18. Documentation: Attach a diagram of the circuitry in your item. Website: <http://styleengineers.org/module/smart-clothing/>.

DIVISION 6033 - 4-H Needlework Department

1. See General Rules applying to all 4-H Exhibitors and general rules applying to all exhibits other than livestock listed previously in this catalog.
2. Member may enter ONE class per category (categories are crochet, knitting, tatting, embroidery, and quilting) in the Needlework Division.
3. Items must be “handmade” by the 4-H member.
4. Item(s) must be clean to be accepted for judging. Previous wearing/using is acceptable (and strongly encouraged!), but item must be clean.
5. **Additional Documentation Required:**
 - a. If the pattern/instructions are not from the Kentucky 4-H Needlework Notebook, a copy of the pattern must be submitted with the exhibit. Label the pattern with entrant’s name and county and attach to exhibit. Attach to item with a safety pin or binder clip. Patterns will be returned in county packets.

CROCHET CATEGORY:**CLASS NO.**

813A **Small crochet item(s) made of medium (4) weight yarn:** Must include rows of single, half double and/or double crochet stitches. Such as: scarf, purse, belt, hat, pillow, two wash cloths (made from cotton yarn), afghan, shawl, vest, or pair of slippers. Scarf must be at least 24” long.

813B **Large Crochet Item(s) made of medium (4) weight yarn:** Must include rows of single, half double and/or double crochet stitches. Such as: afghan, shawl, or vest.

814 **Crochet Item made entirely with novelty yarn:** Do not use standard medium

- (4) weight yarn. Must include rows of single, half double, and/or double crochet stitches: Such as: scarf, purse, belt, hat, pillow, pair of slippers, afghan, shawl, or vest. or pair of slippers. Scarf must be at least 24" long. Novelty yarn is any yarn other than medium (4) worsted weight yarn.
- 815 **Crocheted Item(s) made using the Granny Square technique of granny squares:** May use any weight yarn, single or multiple colors of yarn. Such as: purse, shawl, afghan, or hat.
- 816A **Crocheted Item(s) made using intermediate skills/pattern crochet stitches:** Such as: toy, hat, belt, scarf, pair of mittens, pillow, sweater, vest, shawl or baby blanket, doily (made from bedspread (0) weight thread) or set of 5 different ornaments (made from bedspread (0) weight thread using intermediate skills/ stitches). Include one or more pattern stitches—shell, arch, diamond, bobble, snapdragon, popcorn, cross, puff, cluster, or seed/granite. Can include one or more colors in alternating rows (stripes). Scarf must be at least 24" long.
- 816B **Crochet Item using intermediate skills for shaping and fitting multiple pieces together:** Items must include increase and decrease. Such as stuffed toys or pair of slippers.
- 817 **Item or pair of items using advanced crochet skills:** include one or more of the following advanced skills: afghan stitch, beadwork, camel crochet, filet crochet, Irish crochet, Cro-knit/hook, Cro-tat, hairpin lace, or broomstick lace; combining pattern stitches with crocheted buttons and/or buttonholes; creating plaids, geometric designs or checks; making novelty crochet articles; or creating your own design. Original designs must include a copy of directions, notes and diagrams used to create the items(s). Suggested items include: multi-colored hat, purse, collar (made with bedspread-weight cotton thread), sweater, jacket, afghan or coat. or toy.

HAND EMBROIDERY CATEGORY

All embroidery projects are to be a "finished" item (for example: the stitchery is framed or made into an item such as a pillow, wall hanging, pot holder, eyeglass holder, etc.) The stitchery can be created on a purchased item, such as a pillowcase, clothing, tote bag, purse, bib, or dishtowel. Items may be made from purchased kits that meet the individual project guidelines.

The sizes mentioned in the classes below (such as 5" X 7") relate to the amount of stitching, not the size of the fabric, frame, or finished item.

Class No.

One type of embroidery stitch:

- 818A **Redwork:** Embroidery item made with a single color of floss such as "Redwork," using red floss. Must use the stem stitch and have an embroidered area equivalent to 5 x 7 inches or larger.
- 818B **Stamped Cross Stitch:** Cross stitched design stamped (printed/drawn) on plain woven fabric and have an embroidered area equivalent to 5 x 7 inches or 2" x 16" border or larger.

Multiple types of embroidery stitches: from the following:

- 819A **Candlewicking:** Candlewicking design stamped on plain woven fabric. Must include stem/outline, satin and colonial knot stitches and have an embroidered area equivalent to 5 x 7 inches or larger.
- 819B **Stamped Embroidery:** Embroidery design printed/drawn on plain woven fabric or felt. Must include three or more of the following different stitches (stem/outline, lazy daisy, running, straight, French knot, satin, blanket, chain, or back stitch). May use more than one color of floss. Must have an embroidered area equivalent to 5 x 7 inches or larger.
- 819C **Free Embroidery:** Embroidery design used to embellish a base fabric without the design being drawn on the fabric. Must include three or more of the following different stitches (stem/outline, lazy daisy, running, straight, French know, satin, blanket, chain, or back stitch). May use more than one color of floss. Must have an embroidered area equivalent to 5 x 7 inches or larger. Embroidery may embellish design lines on the item.

Charted embroidery using large cross or snowflake stitches

- 820A **Cross Stitch on Gingham:** Cross stitch on ¼-inch gingham and have an

em-broidered area equivalent to 5 x 7 inches or larger.

- 820B **Counted Cross Stitch on 11 Count Aida Cloth:** Must have an embroidered area equivalent to 5 x 7 inches or larger.
- 820C **Chicken Scratch (on gingham):** Chicken Scratch (also known as Snowflake embroidery) on ¼ inch or smaller checked gingham fabric.

Crewel embroidery:

- 821 **Crewel Embroidery:** design on linen or cotton twill fabric using crewel or Persian yarn. Must have an embroidered area equivalent to 5 x 7 inches or larger.

Charted embroidery using specialty cloth:

- 822A **Counted cross stitch on 14 count Aida cloth:** Must have an embroidered area equivalent to 5 x 7 inches or larger.
- 822B **Counted Cross Stitch using Waste Canvas:** Must have an embroidered area equivalent to 5 x 7 inches or larger.
- 822C **Huck embroidery:** Huck embroidery on huck towel/toweling creating a minimum 2 inch wide border design.
- 822D **Swedish weaving:** Swedish weaving on monk's cloth creating a minimum of 6 inch wide border design.

Embroidery using advanced skills:

- 823A **Ribbon embroidery using silk ribbon for 5 or more embroidery stitches:** Design may also include use of embroidery floss in addition to silk ribbon.
- 823B **Crazy quilt patchwork:** Constructed of irregularly shaped fabric pieces embellished with a combination of ribbon work, specialty thread, embroidery stitches, and/or beadwork creating a finished crazy quilt design.
- 823C **Counted cross stitch on 18 or 22 count even weave or Aida cloth:** Must have an embroidered area equivalent to 5 x 7 inches or larger.
- 823D **English smocking:** Smocked area must be equivalent to 4 x 6 inches or larger. Design must include at least 5 different smocking/embroidery stitches.

KNITTING CATEGORY:

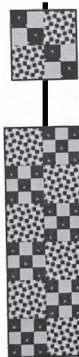
The objective is for youth to learn the skills involved in hand knitting with needles. Therefore items made on a knitting loom or knitting machine are NOT to be entered and will not be judged.

Class No.

- 824 **Small/simple knitted item(s):** Items such as a hat, pillow, purse, scarf, belt, doll afghan, or two washcloths; Use medium (4) worsted weight yarn. Solid color or variegated yarn is acceptable. Wash cloths should be made from worsted weight cotton yarn. Items are limited to those that include garter stitch, stockinette stitch, and/or ribbing stitch. Scarf must be at least 24" long. Items made on a knitting machine or looms do not fit in this class.
- 825 **Knitted Item Novelty Yarn:** Use some yarn other than medium (4) worsted weight yarn. Examples include purse, scarf, hat, leg warmers, etc. Scarf must be at least 24" long. Items made on a knitting machine or looms do not fit in this class.
- 826 **Larger/simple knitted item(s):** Items such as a pair of mittens; pair of slippers, shawl; or afghan (minimum size equivalent to 36" x 36"). May use yarn other than worsted weight yarn. Two colors and one pattern stitch may be used in addition to garter stitch, stockinette stitch, and/or ribbing stitch. Items made on a knitting machine or looms do not fit in this class.
- 827A **Knitted project focused on Shape – Exhibit one item or a pair of items using pick up stitches, and/or knitting in the round. Item must include increase or decrease. May use yarns other than medium (4) worsted weight yarn. May include simple color changes (stripes or duplicate stitch). Ideas such as: gloves, hat, mittens, socks, leggings, skirt, sweater, or vest. Items made on a knitting machine or looms do not fit in this class.**
- 827B **Knitted project focused on Shape – Stuffed Toy:** Exhibit one item using pick up stitches, and/or knitting in the round. Item must include increase or decrease. May use yarns other than medium (4) worsted weight yarn. May include simple color changes (stripes or duplicate stitch). Items made on a knitting machine or looms do not fit in this class.
- 828 **Knitted project focused on Color Design:** Exhibit one item or a pair of items using charted designs or design your own. Chartist designs may include color changes such as Fair Isle Intarsia, and Mosaic knitting. Original designs must in-



using charted designs or design your own. Chartist designs may include color changes such as Fair Isle Intarsia, and Mosaic knitting. Original designs must include a copy of directions, notes, and any diagrams used to create the item. Ideas such as: pillow, afghan (minimum size 45-x 60-inches), holiday stocking (minimum 18-inches in length), purse, pair of socks, sweater. Items made on a knitting machine or looms do not fit in this class.



Knitted project focused on Textural Design: Exhibit one item or pair of items using charted designs or design your own. Chartist designs must include multiple pattern stitches such as Aran Isle knitting or lace knitting. Knitting with beads is also acceptable. Original designs must include a copy of directions, notes, and any diagrams used to create the item. Ideas such as: cell phone holder, amulet, pillow, afghan (minimum size 45-x 60-inches), holiday stocking (minimum 18-inches in length), purse, pair of socks, sweater. Items made on a knitting machine or looms do not fit in this class.

LACEWORK – TATTING CATEGORY:

Class No.

One thread tatting: Tatted item or item embellished with tatted edging or tatted motifs using a tatting needle or shuttle and single thread. Item should include rings with picots and double stitches only. Item to which the tatting is attached may be purchased, made by member or by someone else. Judging is based on tatting and quality of workmanship in attaching it to the item.

Two thread tatting: Bookmark, jewelry, tatted embellishment on clothing or other item using size 5 needle or shuttle and 2 appropriate sized threads. Item must include chains and rings with picots and double stitches, may use one or two colors of thread. Item to which the tatting is attached may be purchased, made by member or by someone else. Judging is based on tatting and quality of workmanship in attaching it to the item.

Advanced Tatting: Exhibit one of the following items:

- Item of shuttle tatting using size 20 or 30 tatting thread. Options: Bookmark, jewelry, embellishment on clothing or other item. Item must include chains and rings with picots and double stitches, may use one or two colors of thread.
- Item of needle tatting using size 7 needle and appropriate sized tatting thread. Options: Bookmark, jewelry, embellishment on clothing or other item. Item must include chains and rings with picots and double stitches, may use one or two colors of thread.
- Item using either shuttle or needle tatting with the use of two threads and beads. Options: jewelry, advanced motif as embellishment on clothing or other item.

Item to which the tatting is attached may be purchased, made by member or by someone else. Judging is based on tatting and quality of workmanship in attaching it to the item.

QUILTING CATEGORY:

All projects are to be a completed item that includes a pieced top, batting, backing fabric, and a finished outer edge. Quilting on long arm quilting machines or hooped embroidery machines is not an option for the Needlework-Quilting project. Quilting or tacking should be done by hand or with the use of a conventional sewing machine. Refer to 4-H Quilting publications.

Piecing technique: stitch by hand or sewing machine

Quilting technique: Stitch by hand or conventional sewing machine using stippling or patterned/stenciled motifs. (Do NOT use a long arm quilting machine or hooped embroidery machine.)

Edge finishing technique: Applied binding with mitered corners, hanging sleeve optional.

Class No.

Quilted Mat (12" x 12" finished size): Exhibit a 2 x 2 "quilt" made with four six-inch squares. At least two of the 6-inch squares must be patchwork designs in which square and/or rectangle pieces are pieced together (do not include triangle pieces).

Piecing technique: stitch by hand or sewing machine

Quilting technique: machine tack or hand tie, stitch by hand or use a conventional sewing machine (Do NOT use a long arm quilting machine or hooped embroidery machine.)

834 Quilted Runner—machine tacked or hand tied (12" x 36" finished size): Exhibit a 1 x 3 four-block runner "quilt". Each four-block must include at least two 6-inch square patchwork blocks made with square and/or rectangle pieces (do not include triangle pieces).

Piecing technique: stitch by hand or sewing machine

Quilting technique: machine tack or hand tie.

835 Quilted Runner—quilted by hand or sewing machine (12" x 36" finished size): Exhibit a 1 x 3 four-block runner "quilt". Each four-block must include at least two 6-inch square patchwork blocks made with square and/or rectangle pieces (do not include triangle pieces).

Piecing technique: stitch by hand or sewing machine

Quilting technique: stitch by hand or use a conventional sewing machine (Do NOT use a long arm quilting machine or hooped embroidery machine.)

836 Hand Quilted Wall Hanging or Small Quilt (36" x 36"): Exhibit a 4 or 9 block quilt or quilted wall hanging. Each block must measure 12 inches by 12 inches for the 4-block version or 9 inches by 9 inches for the 9-block version. Finished project must include appliqué and/or triangle pieces with sashing and/or borders. Finished quilt not to exceed 36 inches by 36 inches.

Piecing technique: stitch by hand or sewing machine

Quilting technique: stitch by hand using cross hatching, stitching in the ditch, or echo/outline quilting.

Edge finishing technique: Applied binding with mitered corners, hanging sleeve optional.

837 Machine Quilted Wall Hanging or Small Quilt (36" x 36"): Exhibit a 4 or 9 block quilt or quilted wall hanging. Each block must measure 12 inches by 12 inches for the 4-block version or 9 inches by 9 inches for the 9-block version. Finished project must include appliqué and/or triangle pieces with sashing and/or borders. Finished quilt not to exceed 36 inches by 36 inches.

Piecing technique: stitched by hand or sewing machine

Quilting technique: stitch using a conventional sewing machine using cross hatching, stitching in the ditch, or echo/outline quilting. (Do NOT use a long arm quilting machine or hooped embroidery machine.)

Edge finishing technique: Applied binding with mitered corners, hanging sleeve optional.

838 Creative Quilt or Quilted Wall Hanging (at least 24" x 24" up to 48" x 48"): Exhibit a creative quilt, minimum finished size 24 inches by 24 inches, maximum size 48 inches by 48 inches. Quilt top should include advanced piecing techniques joined by hand and/or machine that may include dimensional pieces, appliqué, foundation piecing, English paper piecing, miniature scale, and/or landscape design.

DIVISION 6035 - 4-H FOOD EXHIBITS

1. See General Rules applying to all 4-H Exhibitors and general rules applying to all exhibits other than livestock listed previously in this catalog.
2. Member may enter up to 3 classes in the Food Division.
3. Recipes: Entries are to be made using recipes specified in the class description. All recipes can be found in the 4-H Fair Recipe Book at <http://4-h.ca.uky.edu/content/food-and-nutrition> in the **4-H Cooking 101-401 Series**.
4. Place the baked product on a disposable plate. Place the plate inside a re-closable zip-type bag to maintain freshness and prevent damage.
5. Use of plastic film or aluminum foil to wrap product is discouraged but will not cause the product to be disqualified.
6. To prevent damage, wrapped cakes should be transported in a sturdy container such as a cardboard box. *Containers, pie pans, etc. may not be returned to the exhibitor.*

MUFFINS:

Class No.

841 Three Oatmeal Muffins: Use recipe in **4-H Cooking 101**, p. 54.

842 Three Cheese Muffins: Use recipe in **4-H Cooking 201**, p. 49.

BISCUITS:

Class No.

- 843 Three **Rolled Biscuits**: Use recipe in **4-H Cooking 201**, p. 50.
 844 Three **Scones**: raisins may be substituted for dried cranberries. Use the recipe at <http://4-h.ca.uky.edu/content/food-and-nutrition>.

QUICK BREADS:

Class No.

- 845 Three **Cornmeal Muffins**: Use the recipe at <http://4-h.ca.uky.edu/content/food-and-nutrition>.
 846 Three pieces of **Coffee Cake with Topping**: Use recipe in **4-H Cooking 101**, p. 59. Nuts are optional.

COOKIES:

Class No.

- 847 Three **Chewy Granola Bars** (gluten-free): Use recipe in **4-H Cooking 101**, p. 35.
 848 Three **Brownies**: Use recipe in **4-H Cooking 101**, p. 67. Nuts are optional.
 849 Three **Snickerdoodle Cookies**: Use the recipe in **4-H Cooking 201**, p. 88

CAKES:

Class No.

- 850 Half of one 8" or 9" layer **Rich Chocolate Cake** (no icing): Use recipe in **4-H Cooking 301**, p. 116.
 851 Half of one 8" or 9" layer **Carrot or Zucchini Cake** (no icing): Use recipe in **4-H Cooking 301**, p. 119. May use carrots or zucchini.
 852 $\frac{1}{4}$ of a **Basic Chiffon Cake**: Use recipe in **4-H Cooking 401**, p. 118. Do not use variations.

PIES:

Class No.

- 853 One whole **Double Crust Apple Pie**: Use recipes in **4-H Cooking 401**, p. 105 and 97. Leave pie in the disposable pie pan and place all in a zip-type plastic bag. May use spice variation if desired.

YEAST BREADS:

Class No.

- 854 Three **Cinnamon Twists** (no icing): Use recipe in **4-H Cooking 301**, p. 42 & 44.
 855 Three **Soft Pretzels**: Use recipe in **4-H Cooking 301**, p. 48. Use any one topping listed.
 856 One loaf **Oatmeal Bread**: Use recipe in **4-H Cooking 401**, p. 25.

BREAD MADE IN A BREAD MACHINE:

Class No.

- 857 One loaf **Honey Whole Wheat Bread** made in a bread machine: Use the recipe at <http://4-h.ca.uky.edu/content/food-and-nutrition>. May be a 1-pound or $\frac{1}{2}$ -pound, or 2-pound loaf.

CANDY:

Class No.

- 858 Three pieces **Classic Chocolate Fudge**: (size: about one inch square) Use recipe in **4-H Cooking 401**, p. 89. Nuts are optional.

DIVISION 6036 - 4-H FOOD PRESERVATION EXHIBITS

- See General Rules applying to all 4-H Exhibitors and general rules applying to all exhibits other than livestock listed previously in this catalog.
- A member may enter **one class** in the Food Preservation division.
- Recipes: Entries are to be made using recipes found at <http://4-h.ca.uky.edu/content/food-and-nutrition>.

- Canned entries must be prepared from raw produce. Re-canning of commercially processed foods **is not permitted**.
- Helpful information for the following classes can be found on the National Center for Home Food Preservation website.
- Jars not processed by the correct method will not be judged. Open kettle processing is not acceptable for any product.
- Jars must be clear, clean STANDARD jars specifically designed for home canning. If mayonnaise or similar non-standard jars are used, the product will not be judged.
- Two-piece screw bands and lids specifically designed for home canning should be left on containers.
- If judges open the jar for judging purposes, do NOT eat contents of containers upon return.
- Labeling:**
 - All entries: Will have 2 labels. Attach both securely to the outside of the container.
 - Identification card (4LO-11SO): The State Fair Entry system will generate this label.
 - Preserved food label: Use the 4-H labels located at the Daviess County Cooperative Extension Office. Fill out the label completely.

Class No.

- 861 Dried Apples: Dry apples according to the instructions at <http://4-h.ca.uky.edu/content/food-and-nutrition>. Place 12 pieces of dried fruit in a container which is an example of a container suitable for long term storage of dried fruit. Label package with kind of fruit and date processed. Size of the container is not being judged. Publication HE 3-501 may be helpful: <http://www2.ca.uky.edu/agc/pubs/FCS3/FCS3501/FCS3501.pdf>
- 862 Salsa: (pint jar or smaller) canned using a boiling water canner. Use the recipe at <http://4-h.ca.uky.edu/content/food-and-nutrition>. The USDA recommended headspace for salsa is $\frac{1}{2}$ inch. Canning label must be completed by member and affixed to the jar. Publications Home Canning Salsa (FCS3-581) at <http://www2.ca.uky.edu/agc/pubs/FCS3/FCS3581/FCS3581.pdf>, Home Canning Tomatoes and Tomato Products (FCS3-580) at <http://www2.ca.uky.edu/agc/pubs/FCS3/FCS3580/FCS3580.pdf> and USDA Complete
- 863 Dill Pickles: (pint jar or smaller), canned using a boiling water canner: Use the recipe at <http://4-h.ca.uky.edu/content/food-and-nutrition>. The USDA recommended headspace for pickles: $\frac{1}{2}$ inch. Canning label must be completed by member and affixed to the jar. Publications Home Canning Pickled and Fermented Foods (FCS3-582) at <http://www2.ca.uky.edu/agc/pubs/FCS3/FCS3582/FCS3582.pdf> and USDA Complete Guide to Home Canning: http://nchfp.uga.edu/publications/publications_usda.html may be helpful
- 864 Strawberry Jam: (half pint or smaller jar), canned using a boiling water canner. Use the recipe at <http://4-h.ca.uky.edu/content/food-and-nutrition>. The USDA recommended headspace for jam is $\frac{1}{4}$ inch. Canning label must be completed by member and affixed to the jar. Write the type of fruit used on the canning label. Publications FCS3-579 at <http://www2.ca.uky.edu/agc/pubs/FCS3/FCS3579/FCS3579.pdf> and USDA Complete Guide to Home Canning: http://nchfp.uga.edu/publications/publications_usda.html may be helpful. Refrigerator and freezer jams are not appropriate for this class.
- 865 Green Beans: (One pint), canned using a pressure canner. Use the recipe at <http://4-h.ca.uky.edu/content/food-and-nutrition>. Beans may be 'raw packed' or 'hot packed' but the packing method used must be indicated on the label. The USDA recommended headspace for green beans is 1 inch. Canning label must be completed by member and affixed to the jar. Publication FCS3-583 Home Canning Vegetables (<http://www2.ca.uky.edu/agc/pubs/FCS3/FCS3583/FCS3583.pdf>) and USDA Complete Guide to Home Canning: http://nchfp.uga.edu/publications/publications_usda.html may be helpful.

DIVISION 6039 - 4-H HOME ENVIRONMENT

- See General Rules applying to all 4-H Exhibitors and general rules applying to all exhibits other than livestock listed previously in this catalog.



2. A member may enter up to two classes within ONE of the Units I through Advanced and one class in Changing Spaces in the Home Environment Division.
3. Items normally hung on the wall, such as pictures and bulletin boards must be ready to hang with appropriate hardware permanently attached. Items will be exhibited on a wall made of metal grids using S hooks, binder clips, or zip ties if moving on to the State Fair. Entries mounted on mat or foam core board do not require hardware, they will be hung on the wall using binder clips.
4. "Refinished" item refers to an item already in use which has been given a new finish using paint or some type of seal.
5. Write the member's name, county, and class number on the front of the sheet, folder or notebook of documentation.
6. **Labeling:**
 - a. Identification Card (4LO-11SO): The Fair Entry system will generate this label. Attach it in the most visible place on the exhibit, preferably on the **lower right-hand corner**. Labels may be securely taped, attached with a rubber band through a hole in the corner or safety pinned (fabric items). Do NOT use straight pins.
 - b. Small label: To insure that all parts of the exhibit make it back to the participant, "hide" a small label (with a minimum of the 4-H'er's name and county) on EVERY part that might become separated from others; these should not be visible to the public when displayed.

UNIT I EXHIBITS FROM EXPLORING YOUR HOME PROJECT BOOK:

Class No.

- 887 **Color Collage** (pp. 7-8, activity 3): A collage of color created by the member to depict colors liked by the member. A collage is made up of a collection of objects (such as paper, fabric, wrapping paper, wallpaper, carpet, or other materials) artistically arranged and adhered to a mat board or foam core board.
- 888 **Texture Collage** (pp. 8-9, see activities 1 & 2): A collection of textured items or rubbings of textured items artistically arranged and adhered to mat board or foam core board.
- 889 **Transparent finish applied to small wood object** (pp. 13-14): Apply a clear finish such as Tung oil, penetrating seal or polyurethane which does not include stain to a small wood object such as a bowl, tray, board game or box. A transparent finish allows the wood grain to show through. Judging emphasis will be on how well the object is prepared for the finish and how well the finish has been applied, not the construction of the wood object. The wood object may be made by the member, made by someone else, purchased or found. Items that are stained or finished with paint do not fit in this class.
- 890 **Simple cloth item for the home** (Sewing machine may be used but is not required): Examples: decorative pillow, tablecloth, laundry bag, place mats; footstool with a seat made of woven fabric; fabric applied to an item such as a box, plate, or lampshade. Unacceptable: purses, tote bags, backpacks, duffle bags.
- 891 **Wastebasket** (pp. 10-12) decorated by member
- 892 **Bulletin board** (must be ready to hang with appropriate hardware attached)

UNIT II EXHIBITS FROM LIVING WITH OTHERS PROJECT BOOK:

Class No.

- 893 **Decorative item for the home & photo**: decorative item created by the member as part of a 4-H Home Environment Project. Include a photo showing how the item fits into the home's décor.
- 894 **Simple wood item refinished by the 4-H member** (pp. 14-15): Item should have straight lines with no elaborate carvings or turnings. (The idea is to learn how to apply a new finish such as paint, stain, varnish, polyurethane, etc. to a simple wooden furnishing that's already in use.) Documentation is to include a "before" photo with explanation of how the item was refinished must be securely attached. Examples: refinished footstool, children's furniture, small box, tray, picture frame, bookshelves, and plant stand.
- 895 **Cloth item for the home created using a sewing machine** (Unit II, p. 12-14): Examples: hemmed tablecloth or table runner, wall hanging, pillow, pillow case, throw, embellished towels, shower curtain, chair cover, laundry bag, pet bed, valence, and curtains. Unacceptable: purses, tote bags, backpacks, duffle bags.

- 896 **Invitation and thank you letter/note**: Design an invitation and thank you letter/note for a sleepover, birthday party or other occasion of your choice. (p. 6-7) Cards/letters may be created with computer software or handwritten. Decorations on the cards/letters may be member's original artwork, computer-generated art, purchased or found decorative items. The message written in the card or letter is more important than the decorations. Write your name and county on the back of each card/letter and place each card/letter in a plastic sheet protector. (For the fair, it is best to use a fictitious address and contact information on the invitation or thank you.) Envelopes are not required for exhibit.

UNIT III EXHIBITS FROM WHERE I LIVE PROJECT BOOK:

Class No.

- 897 **Accessory for the home created by the 4-H member**: This exhibit is to be made up of two parts: 1) the accessory and 2) a sheet or folder of documentation. Documentation is to include: a sketch or photo to show how the accessory is used in the home and a description of how the design and colors fit in with the other furnishings and color used in the home. Examples: stitchery or appliqué wall hanging, latch hook items, pillow with applied design (stitchery, appliqué or other media), rug, picture in appropriate frame and ready to hang.
- 898 **Individual place (table) setting**: This exhibit is to be made up of two parts: 1) one individual place setting appropriate to a theme or event chosen by the 4-H member and 2) a color photo or diagram of the place setting showing how it should be arranged. (pp. 11-13) Include plate, beverage container(s), placemat, and napkin. Additional decorative item(s) are optional. All items that make up the place setting are to fit on the surface of the placemat. Flatware (knife, fork and spoon) must be included in the photo/diagram showing how all the items are arranged, but do NOT send flatware to the state fair. To insure that all pieces get returned to the member, write the name and county of the exhibitor on tape and place it on every part of the table setting in a location hidden to the public when exhibited at the fair.
- 899 **Piece of furniture refinished** (stripped, sanded, and painted or stained/sealed) by the 4-H member (pp. 16-20): This exhibit is to be made up of two parts: 1) the furniture and 2) Documentation is to include a "before" photo with explanation of how the item was refinished must be securely attached. Examples: rocker, table, chair or chest.
- 900 **Old or discarded item made useful in a new way as a home accessory** (pp. 20): This exhibit is to be made up of two parts: 1) the accessory and 2) a sheet or folder of documentation. Documentation is to include a "before" photo; an explanation of how the item was made useful again in a new way; materials used, cost, and time involved in project. Examples: old silverware flattened and made into wind chimes; scrap wood pieces made into wall art; old lace doily attached to a pillow or framed; old tool box cleaned up and made into a TV stand.

UNIT IV EXHIBITS FROM IN MY HOME PROJECT BOOK:

Class No.

- 901 **An accessory for the home, made with member's original or adapted design**: This exhibit is to be made up of two parts: 1) the accessory and 2) a sheet or folder of documentation. Documentation is to include an explanation of how the item was created/adapted and a description of how and where item is used in the home. Examples: latch hooked rug or wall hanging; pillow with stitchery design; wall hanging of natural dyed yarns, or drawing with mat and finished or refinished frame.
- 902 **Heritage item refinished, restored, or made by the 4-H member**: This exhibit is to be made up of two parts: 1) the item and 2) a sheet or folder of documentation. Documentation is to include information on the history or meaning of the item to the member, how the item was refinished, restored, or made by the member and how it is used in the home. Examples include antique or collectible furniture, memory box, scrapbook that reflects family history/home/house/farm/land of several generations, quilt with heritage design, wall hanging showing family tree.
- 903 **Purchased article selected by 4-H member to solve a home decorating problem**: This exhibit is to be made up of two parts: 1) the purchased article and 2) a folder of documentation. Documentation is to include a description of the problem to be solved, alternatives considered in the solution of the problem, how the plan

was carried out, resources used (time, money) and member's evaluation of the results (satisfaction with purchased article, how article is used in the home), and photos illustrating the before and after effect. Examples include wall decoration, lamp, vase, storage item, desk accessories, bedspread, rug, table linens, pillow, and draperies.

904 **A cloth article made by the 4-H'er showing a major home improvement:** This exhibit is to be made up of two parts: 1) the cloth article and 2) a folder of documentation. Documentation is to include a written description, "before" and "after" pictures /showing how cloth article is used in home, other colors used in room, time and costs involved, and care required. Examples: bedspread, quilt, window treatment and boxed bench pad. **Unacceptable: purses, tote bags, backpacks, duffle bags.**

UNIT ADVANCED: SELF-DIRECTED PROJECT:

The intent of the following classes is to give members an opportunity to put everything they have learned in Units I-IV of the home environment projects into practice.

Class No.

905 **Furniture Experience:** Furniture which has been refinished, reupholstered, recovered, recycled, reused or remodeled - Exhibit is to be made up of two pieces: 1) the piece of furniture and 2) a folder describing the original condition of the furniture (include a picture if possible), work required in completing project, time and cost involved, and how item is used in the home. **DO NOT INCLUDE NEWLY CONSTRUCTED FURNITURE.**

906 **Design Experience:** Create a plan for or actually complete a design experience. The exhibit is to be made up of two pieces: 1) a home furnishing item which is representative of the design experience (item may be made by the member or purchased) and 2) a folder or notebook describing the plan. Examples of project ideas: a plan for redecorating a room; creation of an accessory item using an original design of 4-H member; notebook with pictures and descriptions of architectural styles used in Kentucky homes.

907 **Heritage Experience:** Complete a heritage project. The exhibit is to be made up of two pieces: 1) an item representative of the heritage experience and 2) a folder or notebook describing the overall experience, the significance of the project to your family. Examples of project ideas: Restoration of a family heirloom (could include caning, reseating, etc.) including who it belonged to and the significance to the family; study of furniture styles including pictures and history; study of old buildings in the community including photos and descriptions of the architectural significance, period of history, uses of the buildings; create an item after learning a heritage or craft skill...especially from an older family member or friend and describe how skill was learned, how interest was stimulated and how you will use item and skill.

908 **Major Home Improvement Experience:** Complete a major home improvement project. The exhibit is to be made up of a notebook which describes the project, tell whether project was an individual project or a group or family project, describe the do-it-yourself skills learned time and cost involved. Include before, during, and after photographs, if possible. Examples: improve storage areas in the house or garage; paint the house; wallpaper and decorate a room; remodel the basement.

CHANGING SPACES:

Class No.

909. **Room Floor Plan:** This exhibit is to be made up of two parts: 1) a mounted printout of a room and 2) folder of the documentation described below. Use the Better Homes and Gardens web site www.bhg.com/decorating/arrange-a-room/ or similar software to draw a room (scale: 1 square = 1 foot). Include a door(s), window(s), and furniture. Print in color or black and white (Minimum size 8 ½ x 11 inches. Maximum size 11 x 17 inches). Mount the printout on mat board or foam core board. Documentation should include answers to these questions: 1. Is the room you have drawn similar to a room in your house? What are its dimensions? How many square feet are in the room? 2. Did you have problems with the web

site or software? If so, how did you solve them? 3. Tell about how you worked with the items in your room such as walls, windows, doors and furniture.

910. **House Floor Plan:** This exhibit is to be made up of two parts: 1) mounted printout of house plan and 2) folder of the documentation described below. Use any software program to draw a house plan. Include bedroom(s), bath(s), living space, kitchen, door(s) and window(s). Including a garage is optional. Print in color or black and white (Minimum size 8 ½ x 11 inches. Maximum size 11 x 17 inches.). Mount the printout on mat board or foam core board. Documentation should include answers to these questions: 1. Does your floor plan resemble the house you live in? If not, did you look at other floor plans for inspiration? What type of roof does your house have? 2. Did you consider how a family member who is disabled (for instance, a wheelchair user) might get around in your home? 3. Describe any problems you had with the software and how you solved them. Tell how you worked with additional items required to create a floor plan.

911. **Presentation Board – Color Scheme for One Room:** This exhibit is to be made up of two parts: 1) a presentation board as described below and 2) a folder of the documentation described below. Create a presentation board which illustrates a color scheme for any room in the home. On mat board or foam board, mount color pictures or actual swatches of fabric, wall covering, paint, and flooring. (Color pictures may be downloaded and printed or cut from magazines to represent these items. The mounting board should be 15" or 16" X 20" inches. In the folder, describe the person who lives in the room and the decisions required in selecting the color scheme

912. **Presentation Board – Floor Plan & Color Scheme for Bedroom:** This exhibit is to be made up of two parts: 1) a presentation board as described below and 2) a folder of the documentation described below. Create a presentation board which includes a floor plan (with placement of furniture) and color scheme for a bedroom. Use the Better Homes and Gardens web site www.bhg.com/decorating/arrange-a-room/ or similar software to draw the bedroom (scale: 1 square = 1 foot). Include a door(s), window(s), and furniture. Print in color or black and white. On mat or foam board, mount the floor plan and color pictures or actual swatches of fabric, wall covering, paint, and flooring. (Color pictures may be downloaded and printed or cut from magazines to represent these items.) The mounting board should be 15" or 16" X 20." In the folder, describe the person who lives in the room and the decisions required in selecting the color scheme, flooring, wall, and window treatments; describe the furniture and how the furniture was arranged to accommodate traffic flow; describe the floor, wall, and window treatments selected, etc.; and describe what you like most about the room.

913. **Presentation Board – Floor Plan & Color Scheme for Great Room or Family Room:** This exhibit is to be made up of two parts: 1) a presentation board as described below and 2) a folder of the documentation described below. Create a presentation board which includes a room floor plan (with placement of furniture) and color scheme for a great room/family room. Use the Better Homes and Gardens web site www.bhg.com/decorating/arrange-a-room/ or similar software to draw the room (scale: 1 square = 1 foot). Include a door(s), window(s), and furniture. Print in color or black and white. On mat or foam board, mount the floor plan and color pictures or actual swatches of fabric, wall covering, paint, and flooring. (Color pictures may be downloaded and printed or cut from magazines to represent these items.) The mounting board should be 15" or 16" X 20." In the folder, describe the family who uses the room and the decisions required in selecting the color scheme, flooring, wall, and window treatments; describe the furniture and how the furniture was arranged to accommodate traffic flow; describe the floor, wall, and window treatments selected, etc.; and describe what you like most about the room.

DIVISION 6040 - CONSUMER AND FINANCIAL EDUCATION

1. See General Rules applying to all 4-H Exhibitors and general rules applying to all exhibits other than livestock listed previously in this catalog.
2. **Classes in Division:** Classes 914-915 for grades 4-5; Classes 916-917 for



grades 6-8; Classes 918-920 for grades 9-12

3. A member may enter only **one class** in the Consumer and Financial Education Division.
4. Create poster on 20" wide X 30" high foam core board or sturdy cardboard (vertical direction).
5. Judging criteria will be based on theme, poster design (lettering, attractiveness, how well it conveys a message), and narrative. Posters will not be considered for class champion if they do not include the narrative or do not conform to the topics specified in the class description.
6. Information for the following classes can be found in the 4-H Consumer Savvy project manuals—The Consumer in Me, Consumer Wise, and Consumer Roadmap.
7. Posters that do not include a narrative or do not conform to the topics specified in the class description will not be judged.
8. Labeling:
 - a. **Identification Card (4LO-11SO):** The Fair Entry system will generate this label. Attach the Identification Card securely to the front of the poster, in the **bottom right corner**. It must not protrude beyond edge of poster.

Level 1 (Grades 4-5): The Consumer in Me:

Class No.

- 914 **Poster on "Bargain Shopping"** –For grades 4-5; complete a cost comparison chart for one product you and your family use as outlined in the activities under "Bargain Shopping" on pp. 20-21. Use 20" X 30" foam core board or cardboard, turned in a vertical direction. Write a narrative telling how the decision making process was used to reach your final choice; include answers to the questions in "Check This Out!" on p. 21. At the end of the narrative, list the sources of information used in researching the topic. Make a poster on "comparison shopping." Include name, age, and county at top of narrative. The narrative can be handwritten or a computer printout; single or double spaced; on plain white or notebook paper—one to two pages, written/printed on front side only. Place the narrative in a plastic sleeve. Attach the sleeve to the back of the poster with tape or a binder clip.
- 915 **Poster on "What is the Best Buy?"** – For grades 4-5; complete a cost comparison chart for two products in three different sizes as outlined in the activities on pp. 22-23. Use 20" X 30" foam core board or cardboard, turned in a vertical direction. Write a narrative telling how the decision making process was used to reach your final choice; include answers to the question in "Check This Out!" on p. 23. At the end of the narrative, list the sources of information used in researching the topic. Make a poster on "checking prices". Include name, age, and county at top of narrative. The narrative can be handwritten or a computer printout; single or double spaced; on plain white or notebook paper—one to two pages, written/printed on front side only. Place of the narrative in a plastic sleeve. Attach the sleeve to the back of the poster with tape or a binder clip.

Level 2 (Grades 6-8): Consumer Wise:

Class No.

- 916 **Poster on "Media and the Marketplace"** –For grades 6-8; complete a commercial comparison as outlined in the activities on pp. 18-19. Use 20" X 30" foam core board or cardboard, turned in a vertical direction. Write a narrative of your answers to the questions in "Check This Out!" on p. 19 and tell what conclusions you were able to draw from the experience. At the end of the narrative, list the sources of information you used in researching your topic. Make a poster related to "advertising aimed at young people"—Include name, age, and county at top of narrative. The narrative can be handwritten or a computer printout; single or double spaced; on plain white or notebook paper—one to two pages, written/printed on front side only. Place of the narrative in a plastic sleeve. Attach the sleeve to the back of the poster with tape or a binder clip.
- 917 **Poster on "Decision! Decisions! Decide!"** —For grades 6-8; complete the 6-Step Decision Making process on any item you wish to purchase as outlined in the activities on pp. 12-13. Use 20" X 30" foam core board or cardboard, turned in a vertical direction. Write a narrative of your answers to the questions in "Check This Out!" on p. 13 and tell what conclusions you were able to draw from the experience. At the end of the narrative, list the sources of information you used in researching your topic. Make a poster related to "the consumer decision-making process". Include name, age, and county at top of narrative. The narrative can

be handwritten or a computer printout; single or double spaced; on plain white or notebook paper—one to two pages, written/printed on-front side only. Place the narrative in a plastic sleeve. Attach the sleeve to the back of the poster with tape or a binder clip.

Level 3 (Grades 9-12): Consumer Roadmap:

Class No.

- 918 **Poster on "How to Write a Wrong"** –For grades 9-12; write a complaint letter as outlined in the activities on pp 22-23. Use 20" X 30" foam core board or cardboard, turned in a vertical direction. Write a narrative of your answers to the questions in "Check This Out!" on p. 23 and tell what conclusions you were able to draw from the experience. At the end of the narrative, list the sources of information you used in researching your topic. Make a poster related to "resolving a consumer complaint". Include name, age, and county at top of narrative. The narrative can be handwritten or a computer printout; single or double spaced; on plain white or notebook paper—one to two pages, written/printed on front side only. Place of the narrative in a plastic sleeve. Attach the sleeve to the back of the poster with tape or a binder clip.
- 919 **Poster on "I Own a Car or Does It Own Me?"** –For grades 9-12; calculate and illustrate the costs of owning a car as outlined in the activities on pp. 28-31. Use 20" X 30" foam core board or cardboard, turned in a vertical direction. Write a narrative of your answers to the questions in "Check This Out!" on pp. 29-30 and tell what conclusions you were able to draw from the experience. At the end of the narrative, list the sources of information you used in researching your topic. Make a poster related to "consumer decision-making in buying a car." Include name, age, and county at top of narrative. The narrative can be handwritten or a computer printout; single or double spaced; on plain white or notebook paper—one to two pages, written/printed on front side only. Place of the narrative in a plastic sleeve. Attach the sleeve to the back of the poster with tape or a binder clip.
- 920 **Poster on "What Does Real Life Cost?"** –For grades 9-12; identify and illustrate the true costs of living on your own as outlined in the activities on pp. 32-33. Use 20" X 30" foam core board or cardboard, turned in a vertical direction. Write a narrative of your answers to the questions in "Check This Out!" on p. 33 and tell what conclusions you were able to draw from the experience. At the end of the narrative, list the sources of information you used in researching your topic. Make a poster related to "the financial responsibilities of living on your own. Include name, age, and county at top of narrative. The narrative can be handwritten or a computer printout; single or double spaced; on plain white or notebook paper—one to two pages, written/printed on front side only. Place of the narrative in a plastic sleeve. Attach the sleeve to the back of the poster with tape or a binder clip.

DIVISION 6041 – 4-H LEADERSHIP & WORKFORCE PREPARATION PROJECT

1. See General Rules applying to all 4-H Exhibitors and general rules applying to all exhibits other than livestock listed previously in this catalog.
2. Appropriate hangers for project work is any hardware permanently attached to the project that can be displayed on a metal grid work wall via metal S hook, binder clip, or zip tie. Mat board can be displayed utilizing binder clips while stretched canvas can be displayed using S hooks.
3. Exhibits **MUST** correspond to:
 - a. Any project or activity from the Leadership or Workforce Preparation Curriculum. This curriculum includes: 4-H Step Up to Leadership, Unlock Your Leadership Potential, and Kentucky 4-H Workforce Preparation.
 - b. Only pages relevant to project are needed. Additional pages are allowed but will not be considered by the judges.
 - c. The 4-H ID card (4LO-11SO) should be securely attached to the lower right corner of the first page of resume or pages to be judged for the scrapbook.
 - d. **THIS IS NOT A GENERAL SCRAPBOOKING CATEGORY.** (For scrapbooking, see Division 6029, Class 745/746) The scrapbook format is a method of recording the leadership experiences of youth. Fair projects that do not demonstrate a clearly stated correspondence to the Workforce Preparation curriculum will not be considered for judging or will receive a white ribbon.



4. An exhibitor is limited to one entry in each division for a total of three (3) entries.
5. Exhibit format must meet the following guidelines:
 - a. Leadership scrapbook must be 12"x12" or 8 ½" x11" scrap book or notebook format
 - b. Resume must be in sheet protector on 8 ½" x11" paper
6. Photos should clearly address the theme or activity corresponding to the selected leadership project. Each photo should be explained with a 2-3 sentence caption.
7. The Leadership Project should contain the following:
 - a. Two (2) or more photos on each page with captions for each photo
 - b. One to two (1-2) paragraphs of narrative on one of the pages
8. Photos can be taken by the 4-H'er or another person. The pictures should clearly address the Leadership project that is selected. Pictures may be cropped as desired.
9. Pages will be scored on: organization of project (easy to follow and relevant to a Leadership project), neatness, narrative content, caption content, photo content, and overall effectiveness of the project.
10. Resume should contain the following
 - a. Completed resume (only the first page of the resume will be judged)
 - b. Resume will be judged based on visual appeal, organization, reverse chronological format, grammar/spelling
 - c. Resume should follow guidelines from the Kentucky 4-H Workforce Preparation Curriculum

DIVISION 6041-A 4-H WORKFORCE PREPARATION PROJECT:

CLASS NO.

- 925 Junior Division: Resume – one page resume using Microsoft Word. See the Kentucky 4-H Workforce Preparation Curriculum <https://4-h.ca.uky.edu/rg/workforce-prep>.
- 926 Senior Division: Resume – one page resume using Microsoft Word. See the Kentucky 4-H Workforce Preparation Curriculum <https://4-h.ca.uky.edu/rg/workforce-prep>.

DIVISION 6041-B 4-H LEADERSHIP PROJECT:

CLASS NO.

- 927 Junior Level – 2 pages based on an activity, program or project from the 4-H Leadership Curriculum. All activities must be conducted as part of your 4-H year.
- 928 Senior Level – 4 pages based on an activity, program or project from the 4-H Leadership Curriculum. All activities must be conducted as part of your 4-H year.

DIVISION 6041-C 4-H Club Scrapbook:

CLASS NO.

- 929 4-H Club Scrapbook – Using pictures and captions tell about your 4-H Club's year focusing on leadership, communications and community service activities. (No limit on page numbers) All activities must be conducted as part of your 4-H year.

DIVISION 6042- KENTUCKY 4-H TRENDS

1. See General Rules applying to all 4-H Exhibitors and general rules applying to all exhibits other than livestock listed previously in this catalog.
2. A member may enter **up to 3** classes within the 4-H Trends Division.
3. Each exhibit must be properly labeled. Place ID tag (4LO-11SO) in the most visible place on the exhibit, preferably on the **lower right-hand corner**. Labels may be securely taped, attached with a rubber band through a hole in the corner or safety pinned (fabric items). To insure that all parts of the exhibit make it

back to the 4-H'er, "hide" a small label (with a minimum of the 4-H'ers name) on EVERY parts that might become separated from others; these should not be visible to the public when displayed.

4. All photography classes with one photograph must be mounted on 10"x 16" MAT BOARD (no poster board or foam core board accepted). Single photographs are limited to up to a maximum size of 8"x 12".
5. Each picture must be mounted securely. Rubber cement or dry mounting tissue is recommended. **Do not use photo** mounting corners.

CLOVER PHOTOGRAPHY:

1. Exhibit is limited to a single photograph.
2. Subject of photograph must include 4-leaf clover. (Photographs of 3-leaf clovers will NOT be accepted.)
3. 4-leaf clover may be real or created.
4. Photograph may be color or black and white.
5. Follow all mounting rules described in the Cloverville Photography division.
6. Maximum photograph size 8" X 12".
7. The 4-H identification tag should be located in the bottom right hand corner.

CLASS NO.

- 1010 Junior Clover Photograph
1011 Senior Clover Photograph

RECORDING HISTORY:

1. Judging criteria will be based on implementation of the 4-H theme. 4-H historical content, poster design, (lettering, attractiveness, how well it conveys the message.) As well as the effectiveness of the poster to promote 4-H.
2. Exhibit must be completed on a standard full size foam core board.
3. Posters may not include items or embellishments that make the poster 3-dimensional.
4. Any use of the 4-H Clover must adhere to the standards and guidelines of the registered 4-H clover.
5. Any color foam core board is acceptable.

CLASS NO.

- 1040C CLOVERBUDS Helping Others – Keep a poster showing the different ways you help others. Use pictures of you helping. Tell on each page how you helped someone. Your poster board should have 5-10 photographs, drawings, and/or colored pictures.
- 1040 Junior Historical Poster
1041 Senior Historical Poster

UPCYCLING PROJECT:

Upcycling is taking something that you are throwing away and making it into something that maintains or improves the quality of the materials. Example: There are coin purses made from sweaters, earrings cut out of vinyl records and an old travel case made into a clock. The designs will be judged on quality, use, and creativity. Entries are limited to one entry per class per county.

CLASS NO.

- 1050 Junior Upcycling Project
1051 Senior Upcycling Project

4-H CAKE DECORATING:

1. Entry consists of a decorated (Styrofoam) cake.
2. Styrofoam **MUST** be the base for the decorating. Real cakes will NOT be accepted.
3. Judging is based on decoration only not taste.
4. Exhibit is not limited to a color or design.
5. Refrigeration will NOT be provided.
6. Exhibit must be limited in size to no taller than 24" and no more than ½ sheet board.
7. Cakes may be returned, based on the condition at the end of the fair.



8. 4-H identification cards must be attached to bottom right hand corner of sheet board.

CLASS NO.

- 1060 Junior 4-H Cake Decorating (Cake must include the 4-H Clover either in design or decoration)
- 1061 Senior 4-H Cake Decorating (Cake must include the 4-H Clover either in design or decoration)
- 1062 Junior General Cake Decorating
- 1063 Senior General Cake Decorating

CUP CAKES:

1. Entry consists of a decorated (Styrofoam) cake.
2. Styrofoam MUST be the base for the decorating. Real cakes will NOT be accepted.
3. Judging is based on decoration only not taste.
4. Exhibit is not limited to a color or design.
5. Refrigeration will NOT be provided.
6. Exhibit must be limited to two cupcakes.
7. Cakes may be returned based on condition at the end of the fair.
8. 4-H identification cards must be attached to bottom right hand corner of sheet board.

CLASS NO.

- 1070 Junior 4-H Cup Cake Decorating
- 1071 Senior 4-H Cup Cake Decorating
- 1072 Junior General 4-H Cup Cake Decorating
- 1073 Senior General Cup Cake Decorating

NON TRADITIONAL NEEDLEWORK:

The objective for this class is for youth to learn the basic stitches of knitting either non traditional needles, arms, or looms.

CLASS NO.

- 1074 Junior loom knitting
- 1075 Senior loom knitting
- 1076 Junior arm knitting
- 1077 Senior arm knitting



315 Worthington Rd, Owensboro, KY
(270) 684-2339



**Come by and check out the latest in our
full line of John Deere Construction, Forestry, and
Commercial worksite equipment at our new
state-of-the-art-facility.**



*"Working Hard to Serve
You Better"*





ENVISION

CONTRACTORS, LLC





IN CONCERT

EXILE

JULY 27, 2019

BEER GARDEN

TICKETS ON SALE NOW!

TICKETS MAY BE PURCHASED AT OWENSBOROTICKETS.COM

PRESENTED BY:

DAVIESS COUNTY LION'S CLUB • DAVIESS COUNTY FAIRGROUNDS

WE WANT TO BE YOUR DEALER FOR LIFE.

STEVE JONES

CHRYSLER • DODGE • JEEP • RAM



DODGE



RAM

Jeep

**Shop
Downtown
Owensboro**

322 WEST 4TH STREET
OWENSBORO, KY 42301

(270) 685-9000

1-866-88-JONES

stevejoneschrysler.com



JOIN THE REVOLUTION.

The people have spoken. They've cried out for a revolt. One that will change the banking industry back to the way it was supposed to be. Now, it's here. And with our commitment to stay financially strong while putting our customers and communities first, the revolution is growing every day.

Demand better banking. Join the revolution at Independence Bank.

TO JOIN UP, VISIT 1776BANK.COM.



 **Independence Bank**
A REVOLUTION IN BANKING

2425 Frederica Street
270-686-1776

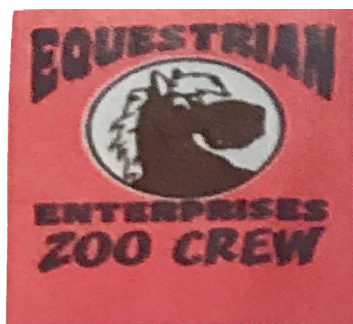
2465 Parrish Avenue
270-689-1696

3228 Highway 54
270-689-1979



Member FDIC





Equestrian Enterprises

Horses • Ponies • Donkeys & Exotic Animals

Petting Zoo
Pony Rides
Private Parties
Corporate Events

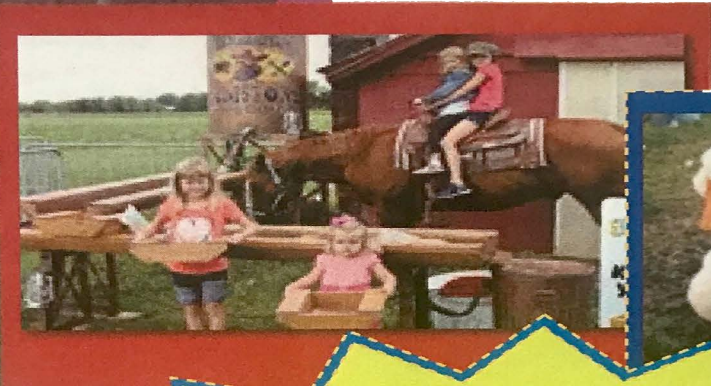
Debbi Taylor
(270) 929-4597
dtaylor3000gt@aol

CUSTOMIZE YOUR EVENT TODAY! NO PARTY TOO BIG OR TOO SMALL! FESTIVALS, PICNICS, CAMPS LIMITED SPACES BOOK EVENTS SOON

CELEBRATING OVER 30 YEARS OF SERVICE!!

BIRTHDAY PARTIES

SCHOOLS



OFF 231
IN UTICA, KY

SUMMER HORSE CAMPS!!
COME OUT FOR A LESSON AND ENJOY THE FARM ANIMALS WHILE YOU ARE HERE!
LESSONS: GROUP \$25 PER HOUR
PRIVATE \$30 PER HOUR
FULLY INSURED



Sponsored by Hayden Construction



Norman McDonald's
— COUNTRY DRIVE-IN —
270-729-4272
Dine In or Carry Out



REPUBLIC
SERVICES

We'll handle it from here.®

Jennifer Bartley
Territory Representative

100 Ellis Smeathers Rd.
Owensboro, KY 42303

jbartley@republicservices.com

c 270.929.0273 | f 270.686.7917

RepublicServices.com



Swedish Match®





So . . . what do you want to drive?

TAPP MOTORS

INC.

Tommy Tapp

4550 Hwy. 54 East
Owensboro, KY 42303

Ofc: (270) 926-0235
Fax: (270) 926-8172

T H E
H I N E S
C E N T E R

YOUTH CROP DIVISION

1. For Daviess County Youth 4 - 17 years of age.
2. Entries due Tuesday, July 9 from 4:00 - 6:00 p.m.
3. Maximum of 1 entry per class, 5 classes per youth.
4. Pickup exhibits and **premium** Sunday, July 14, from 2:00 p.m. to 4:00 p.m.

Total money allotted to Youth Classes listed below is \$400 with premium to be determined by using the Danish System. The value of "X" shall not exceed \$2.00. This is not a minimum or a guarantee, but the maximum.

- | | |
|--|--|
| 302 Beets Any Variety - 4 Topped | 329 Tomatoes – Heirloom, Any Type - 4 |
| 303 Blackberries - 1 Cup Cultivated | 330 Mixed Flowers, Small Arrangement
(under 10 inches tall) |
| 304 Bush Beans - Plate of 12 | 331 Mixed Flowers, Large Arrangement
(over 10 inches tall) |
| 305 Pole Beans - Plate of 12 | 332 Burley Tobacco - 1 Stick of 5 Stalks |
| 306 Cabbage Any Variety - 1 | 333 Dark Air Cured - 1 Stick of 5 Stalks |
| 307 Carrots Any Variety - 4 Topped | 334 Most Unusual Vegetable |
| 308 Corn Sweet White, Shucks - 4 Ears | 336 Largest Sunflower |
| 309 Corn Sweet Yellow, Shucks - 4 Ears | |
| 310 Corn Sweet Bicolor, Shucks - 4 Ears | |
| 311 Cucumbers - 4 | |
| 312 Eggplant - 2 | |
| 313 Okra - 7 | |
| 314 Onions Any Variety - 4 | |
| 315 Peppers Bell - 4 | |
| 316 Peppers Long, Hot Peppers - 4 | |
| 317 Peppers Pimento - 4 | |
| 318 Peppers Banana - 4 | |
| 319 Potatoes White - 4 | |
| 320 Potatoes Red - 4 | |
| 321 Squash Yellow Summer Straight Neck - 3 | |
| 322 Squash Crooked Neck - 3 | |
| 323 Squash Zucchini - 3 | |
| 324 Marigolds Any Type - 3 | |
| 325 Sunflowers - 3 Stems | |
| 326 Zinnia Any Type - 3 | |
| 327 Tomatoes Red Regular Size - 4 | |
| 328 Tomatoes Red Cherry Type 4 | |





STORM'S Trophies

Trophies • Plaques • Awards • FREE ENGRAVING

1238 Woodlawn Avenue • Owensboro, KY 42301

PHIL STORM, 270-683-9979 • Fax: 270-691-1125

Email: stotro@hotmail.com



Aflac[®]

Jennifer & Garrett Keller

BEEF 'O' BRADY'S[®]

GOOD FOOD, GOOD SPORTSSM

Check out our weekday specials starting at \$5.99

Check out our new craft beer selection with over 32 beers on tap!

Locally owned & operated by

The Bratcher Family since 2006


CELEBRATING 10 YEARS OF BUSINESS IN 2016

Off Hwy 54 at Fairview Dr.

270.685.4969

Celebrating
10
YEARS

Celebrating
10
YEARS



Eat @ Bill's

Bill Hughes • Chef/Owner

Bill's Restaurant

420 Frederica Street • Owensboro, KY 42301



FISCHER'S Keystop

"We pump your Gas"

4010 Highway 144 • Owensboro, KY 42302 • (270) 686-7608

MILES ENTERPRISES

Harlan Barnett
Grain & Material Handling

2760 Keller Road
P. O. Box 22879 (42304-2879)
Owensboro, KY 42301

Phone: (270) 926-8737
Fax: (270) 688-5937
Home: (270) 733-4016
Mobile: (270) 316-5638



DAVIESS COUNTY LIONS FAIR



UTV Shootout!!!

Thursday July 11th

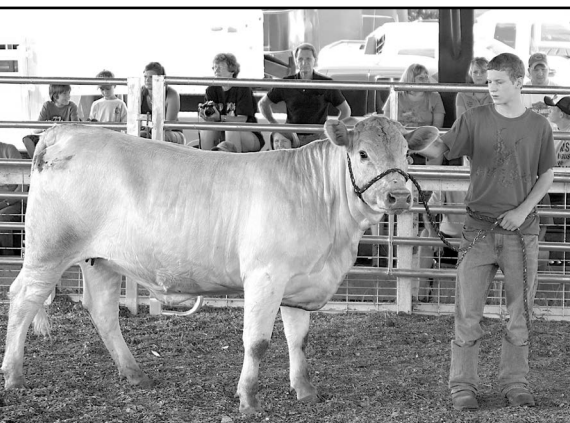
Featuring Gun Slinger, USA1, Stomper,
100% Monkey Business, and Quadzillia.
Also Monster Ride Truck and UTV Racing



SPONSORED BY CASTLEN STEEL

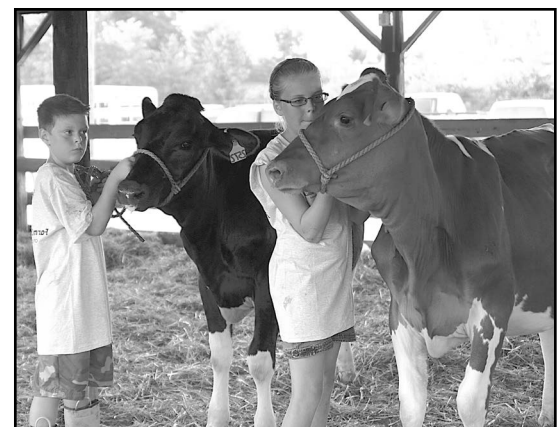
LIVESTOCK DIVISION

General Chairman - Daniel Hayden



RULES:

1. The management reserves the right to bar any exhibitor from competition for misconduct.
2. Every registered beef animal must have a readable tattoo.
3. The superintendent of the division will have charge of the assignment of the space, and exhibitors will obey the rules.
4. Check the general rule and regulations and current Health Requirements found elsewhere in this book.



4-H AND FFA

1. Members of 4H Clubs and FFA Chapters will be eligible to enter the Youth Division.
2. Showmanship classes will be divided in the Jr., Intermediate, and Sr. Division. Or divisions at the discretion of the show committee
3. During the youth show, all animals must be shown by members of 4H or FFA, or other person about the same age.
4. Club members must have project started at least 60 days prior to show.
5. For the Classes listed for each breed, there will be a Youth and an Open Show as outlined BEEF AND DAIRY
 - a. Judging will first be for the Open Show. Then any animals not entered in the Youth Show are dismissed.
 - b. A total of \$1200 is allotted to Youth Classes to be divided among the Exhibitors in each division on the 3X, 2X, and 1X system, provided that the value of "X" may not exceed \$4.00. This is not a minimum, or a guarantee, but a maximum.
6. Blue ribbon animals, Beef and Dairy, will receive the same premium.
7. All classes are open to the world.

KENTUCKY LIVESTOCK EXHIBITION REQUIREMENTS.

GENERAL PROVISIONS OUT OF STATE LIVESTOCK

1. All animals, except as noted, shall be accompanied by a certificate of Veterinary Examination. A certificate of Veterinary Examination shall be sold thirty (30) days after issuance. A certificate of Veterinary Examination means a legible record covering the requirements of the state of destination accomplished on an official form of a standard size from the state of origin or an equivalent form of the Animal and Plant Health Inspection Service, Veterinary Services, United States Department of Agriculture, which is prepared and issued by a licensed, accredited veterinarian.
2. If animals are from tuberculosis accredited or brucellosis certified herds, the certificate of Veterinary Examination shall show accreditation and certification number with date of last herd test for tuberculosis and brucellosis.
3. Livestock infected with warts, ringworm or any infectious or communicable diseases are not eligible for show.

LIVESTOCK HEALTH REQUIREMENTS

All livestock/animals offered for sale or exhibition at Kentucky County fairs shall meet the following regulations according to KRS Chapter 257:

- a. 302 KAR 20:040 (Entry into Kentucky)
- b. 302 KAR 20:065 (Sale and Exhibition of Kentucky Origin Livestock) Any questions concerning these health regulations should be directed to your local veterinarian or the Kentucky State Veterinarian's office at (502) 564-3956.

Livestock Health Regulations can be obtained on the Kentucky Department of Agriculture Web site: http://www.kyagr.com/state_vet/ah/index.htm
Please be advised that Livestock Health Regulations are subject to change any time.

Sponsored by: Farm Credit Mid-America & Tractor Supply



MISS DAVIESS COUNTY PAGEANT

Director ~ Haley London
270-297-9519 Ext 705

FRIDAY, JUNE 28, 2019 • 7:00 P.M.
Hines Center ~ Philpot, KY
~ Tickets available at the door ~
Adults \$6 • 6-12 \$4 • 5 & under FREE

*Come see who will
reign as
Miss Daviess
County 2019!*

**2018 MISS DAVIESS COUNTY
CELINE LE**

Flowers & Decorations Donated by:
WELBORN FLORIST

Sponsored by:

INDEPENDENCE BANK



MISS TEEN DAVIESS COUNTY

Director ~ Latasha Shemwell, 270-297-9519 Ext 703

SATURDAY, JUNE 29 • 7:00 P.M.

The Hines Center ~ Philpot, KY

~ Tickets available at the door ~

Adults \$6 • 6-12 \$4 • 5 & under FREE



*Come see who
will reign as
Miss Teen
Daviess County
2019!*

Flowers & Decorations Donated by:
WELBORN FLORIST

Sponsored by:

The Hines Center
One Wellness Drive
Philpot, Ky. 42366
270-729-3030

Balanced Life Wellness and Aesthetics
3240 Mt. Moriah Ave, Suite B.
Owensboro, KY. 42303
270-689-5433



2018 Miss Pre-Teen Daviess County

MISS PRE-TEEN DAVIESS COUNTY

Director ~ Latasha Shemwell, 270-297-9519 Ext. 702

THURSDAY, JUNE 27 • 7:00 p.m.

The Hines Center ~ Philpot, KY

~ Tickets available at the door ~

Adults \$6 • 6-12 \$4 • 5 & under FREE

*Come see who will reign as
Miss Pre-Teen Daviess County 2019!*

BABY AND TODDLER CONTESTS

SUNDAY, JUNE 30, 2019

1:00 PM

The Hines Center • Philpot, KY

For entry applications, go to www.daviesscountyfair.com

For more information contact:

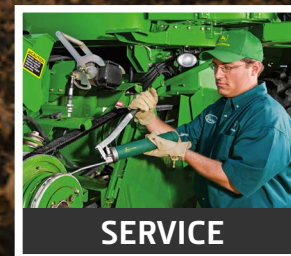
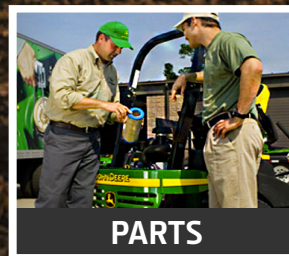
Amber Teasley: 270-297-9519, ext. 701

Admission: Adults, \$5.00; Children, 6-12 years, \$3.00; 5 & Under FREE

One parent FREE with each participants.



We've been Wright there for three generations



JOHN DEERE

WRIGHT
IMPLEMENT

OWENSBORO
3225 Carter Rd.
(270) 683-3606

HARDINSBURG
1220 Hwy 261 S
(270) 756-5152

BOWLING GREEN
1330 Plano Rd.
(270) 781-4747

GLASGOW
2750 New Bowling Green Rd.
(270) 678-9200

BROOKS
1389 E Blue Lick Rd.
(502) 251-1800

ORLEANS
2662 N State Road 337
(812) 865-3334

CORYDON
1129 Highway 62 NW
(812) 738-2162

SEYMOUR
1250 W 2nd Street
(812) 522-1922

SELLERSBURG
5311 County Road 403
(812) 246-6309



*Before operating or driving, always refer to the safety and operating information on the vehicle and in the operator's manual.

Visit wrightimp.com





STIHL • SNAPPER • ECHO • CUB CADET • TROY BILT • KUBOTA • HONDA • SCAG • TORO



SALES • SERVICE • PARTS

*325 Salem Drive
Owensboro Kentucky 42303
(270) 684-8488*

*5600 Old Hwy. 54
Philpot, Kentucky 42366
(270) 729-4721*



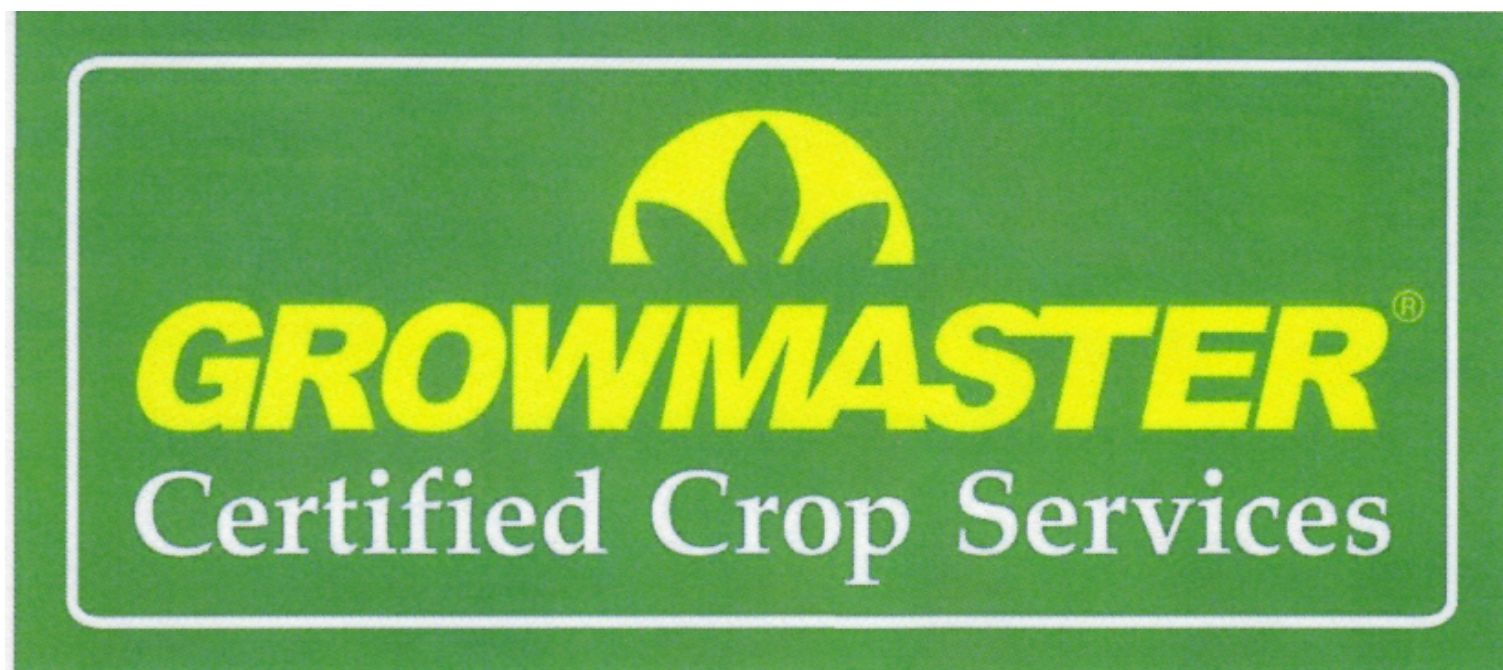
FIREWORKS OVER THE FAIR



**SATURDAY NIGHT DURING INTERMISSION
AT BATTLE OF THE BLUEGRASS**

TRUCK AND TRACTOR PULLS

SPONSORED BY: WILKERSON PLASTERING AND ENVISION CONTRACTORS



exclusively by



SOUTHERN STATES

Southern States can provide all of your crop needs including Seed, Fertilizer, Crop Protectants, Petroleum and Propane. Services include Crop Spraying and Fertilize Spreading, including with a high clearance Spreader for over the top of corn. Seed Treatment is available.



Southern States Owensboro Service
3231 Carter Road
Owensboro, KY 42301
(270) 684-9065

Including branches at Calhoun & Sebree



Glenn Family Services and the Daviess County Lions Club Fair

*Crafting family memories
for generations.*



G·L·E·N·N

FAMILY SERVICES

900 Old Hartford Road
Owensboro
270-683-1505

www.glenncares.com



4-H AND FFA FEEDER CALF EXHIBITION

WEDNESDAY, JULY 10, 2019

EXHIBITION: 5:00 p.m.

On Grounds – 4:00 p.m.

LIVESTOCK NEEDS TO ENTER FAIRGROUNDS FROM GATE 2 ON WINKLER ROAD

1. Exhibitors must be current members in good standing of 4H or FFA and registered participants in the Daviess County 4-H and FFA Feeder Calf Project.
2. Calves are to be exhibited clean; however, fitting of calves will not be allowed.
3. Calves are to be halter broken and trained to lead. If not halter broken, may still be exhibited in a pen to collect \$5.00 exhibitor premium.
4. Premiums will be awarded.
5. Youth may exhibit 1 steer and/or 1 heifer. .
6. Showmanship classes include the following divisions: **Junior** 9 -11 years old as of January 1, 2019, **Intermediate** 12 -14 years old as of January 1, 2019, **Senior** 15 years old and up as of January 1, 2019 (entries are not eligible for open youth showmanship)
7. All exhibitors will receive a \$5.00 premium
8. All calves due on grounds by **4:00 p.m.**

Feeder Steers

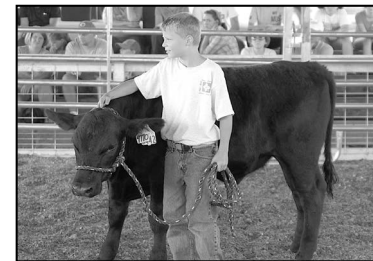
Class	Premiums
Class 1	1st: \$20.00
Class 2	2nd: \$15.00
Class 3	3rd: \$12.50

Champion Steer - \$25.00 plus trophy
Reserve Steer - \$20.00 plus trophy

Feeder Heifers

Class	Premiums
Class 4	1st: \$20.00
Class 5	2nd: \$15.00
Class 6	3rd: \$12.50

Champion Heifer - \$25.00 plus trophy
Reserve Heifer - \$20.00 plus trophy



The Eyecare Center

**DR. VAUGHN G. SANDERS &
 DR. CHARLES D. HECK**

Optometrists

1705 Frederica Street
 Owensboro, Kentucky 42301

270-683-2121

www.owensboroeyecare.com

Facebook: Owensboro Eyecare Center

CANNING DIVISION

Entries will be accepted on Tuesday, July 9 from 4 p.m. - 6 p.m. at the Fairgrounds. All entries must be in standard Mason canning jars and sealed to be judged. Paraffin is not recommended on sealing jellies or any canned goods. All items must be labeled and dated, any item over 1 year old will NOT be accepted. One entry per category per person maximum. Premiums will be awarded and entries may be picked up on Sunday, July 14 from 2 p.m. - 4:00 p.m. All items not picked up at this time will be donated.

JAMS, JELLIES, PRESERVES (Pints or Jelly Jars)

Class #.....	1st	2nd	3rd
350 Apple Butter	\$6.00	\$5.00	\$4.00
352 Apple Jelly	6.00	5.00	4.00
353 Apple Preserves	6.00	5.00	4.00
354 Blackberry Jam	6.00	5.00	4.00
355 Blackberry Jelly	6.00	5.00	4.00
356 Blackberry Preserves	6.00	5.00	4.00
357 Blueberry Jam	6.00	5.00	4.00
358 Blueberry Jelly	6.00	5.00	4.00
359 Cherry Jam	6.00	5.00	4.00
360 Cherry Jelly	6.00	5.00	4.00
361 Cherry Preserves	6.00	5.00	4.00
362 Citrus Marmalade	6.00	5.00	4.00
363 Grape Jelly	6.00	5.00	4.00
364 Peach Butter	6.00	5.00	4.00
365 Peach Preserves	6.00	5.00	4.00
366 Pear Butter	6.00	5.00	4.00
367 Pear Preserves	6.00	5.00	4.00
368 Pepper Jelly	6.00	5.00	4.00
369 Plum Jelly	6.00	5.00	4.00
370 Plum Preserves	6.00	5.00	4.00
371 Raspberry Jam	6.00	5.00	4.00
372 Raspberry Jelly	6.00	5.00	4.00
373 Raspberry Preserves	6.00	5.00	4.00
374 Strawberry Jam	6.00	5.00	4.00
375 Strawberry Jelly	6.00	5.00	4.00
376 Other Jams or Jellies	6.00	5.00	4.00
377 Other Preserves or Butters	6.00	5.00	4.00
378 Other Marmalade	6.00	5.00	4.00

CANNED FRUITS & VEGETABLES (Quarts or Pints)

379 Apples	6.00	5.00	4.00
380 Applesauce	6.00	5.00	4.00
381 Banana Peppers	6.00	5.00	4.00
382 Beets	6.00	5.00	4.00
383 Berries	6.00	5.00	4.00
384 Blackberries	6.00	5.00	4.00
385 Blueberries	6.00	5.00	4.00
386 Butter Beans	6.00	5.00	4.00
387 Carrots	6.00	5.00	4.00
388 Cherries	6.00	5.00	4.00
389 Chili Sauce	6.00	5.00	4.00
390 Corn	6.00	5.00	4.00
391 Grape Jucie	6.00	5.00	4.00

CANNED FRUITS & VEGETABLES (Cont.)

392 Green Beans	6.00	5.00	4.00
393 Green Peas	6.00	5.00	4.00
394 Green Tomato Ketchup	6.00	5.00	4.00
395 Lima Beans	6.00	5.00	4.00
396 Okra	6.00	5.00	4.00
397 Peaches	6.00	5.00	4.00
398 Pears	6.00	5.00	4.00
399 Peppers (Hot)	6.00	5.00	4.00
400 Pizza Sauce	6.00	5.00	4.00
401 Potatoes	6.00	5.00	4.00
402 Saurkraut	6.00	5.00	4.00
403 Soup Mixture	6.00	5.00	4.00
404 Spaghetti Sauce	6.00	5.00	4.00
405 Sweet Potatoes	6.00	5.00	4.00
406 Tomato Juice	6.00	5.00	4.00
407 Tomato Ketchup	6.00	5.00	4.00
408 Tomatoes, Red	6.00	5.00	4.00
409 Tomato Salsa	6.00	5.00	4.00
410 Canned Fruit, 4 kinds, 4 jars	6.00	5.00	4.00
411 Other Fruits (not listed above)	6.00	5.00	4.00
412 Canned Vegetables, 4 kinds, 4 jars	6.00	5.00	4.00
413 Other Vegetables (not listed above)	6.00	5.00	4.00
414 Other Salsa (not listed above)	6.00	5.00	4.00

CANNED PICKLES, RELISHES (Pints preferred)

415 Bread & Butter Pickles	6.00	5.00	4.00
416 Chow-Chow	6.00	5.00	4.00
417 Corn Relish	6.00	5.00	4.00
418 Dill Pickles	6.00	5.00	4.00
419 Green Tomato Pickles	6.00	5.00	4.00
420 Green Tomato Relish	6.00	5.00	4.00
421 Lime Pickles	6.00	5.00	4.00
422 Pepper Relish	6.00	5.00	4.00
423 Pickled Beets	6.00	5.00	4.00
424 Pickled Fruit	6.00	5.00	4.00
425 Pickled Okra	6.00	5.00	4.00
426 Pickled Peppers	6.00	5.00	4.00
427 Pickled Vegetables	6.00	5.00	4.00
428 Ripe Tomato Relish	6.00	5.00	4.00
429 Sandwich Stacker Pickles	6.00	5.00	4.00
430 Sweet Pickles	6.00	5.00	4.00
431 Sweet Relish	6.00	5.00	4.00
432 Other Pickles (not listed above)	6.00	5.00	4.00
433 Other Relishes (not listed above)	6.00	5.00	4.00

Schrecker

SUPPLY COMPANY

1100 Sweeney Street • Owensboro, KY 42303 • Phone: 270-684-6244

www.schreckersupply.com



OPEN BEEF CATTLE SHOW

Angus – Polled Hereford – Charolais – Hereford – Chianina – Simmental
Commercial – Limousine and other breeds

WEDNESDAY, JULY 10, 2019 - Following Feeder Calf Show

LIVESTOCK NEEDS TO ENTER FAIRGROUNDS FROM GATE 2 ON WINKLER ROAD

Chairman: Daniel Hayden, 270-570-2815

RULES:

1. Judging starts Wednesday, July 10 following Feeder Calf Exhibition and Youth Beef Steers.
2. All beef animals to remain on grounds until released by chairman.
3. All cattle must comply with health regulations found under Livestock Health Requirements for Exhibition in Kentucky.

PREMIUMS: 1st - \$25.00 2nd - \$20.00
3rd - \$15.00 **Supreme Champion - \$50.00**
Reserve Champion - \$25.00

CLASSES:

BULLS

- 501 Jr. Calf calved after January 1, 2019
- 270 Senior Calf between September & December 31, 2018
- 503 Late Summer Yearling between July 1 & August 31, 2018
- 504 Early Summer yearling calved between May 1 & June 30, 2018
- 505 Late Junior Yearling calved on or between March 1 & April 30, 2018
- 506 Early Junior Yearling calved on or between January 1 and February 28, 2018

- 507 Senior Yearling and 2 year old calved on or between January 1 and December 31, 2017
- 508 Champion
- 509 Reserve Champion Bull Second place animal in class from which Champion was selected is eligible to show for Reserve Champion.

FEMALES:

- 510 Jr. Calf after January 1, 2019
- 511 Sr. Calf calved between September & December 31, 2018
- 512 Late Summer Yearling calved on or between July 1 & August 31, 2018
- 513 Early Summer yearling calved on or between May 1 & June 30, 2018
- 514 Late Jr. yearling calved on or between March 1 & April 30, 2018
- 515 Early Jr. yearling calved on or between January 1 & February 28, 2018
- 516 Sr. yearling calved on or between September 1 and December 31, 2017
- 517 Cow/Calf
- 518 Champion Female
- 519 Reserve Champion Female Second Place animal in class from which Champion was selected is eligible to show for Reserve Champion.

YOUTH FAT STEERS SHOW

WEDNESDAY, JULY 10, 2019

LIVESTOCK NEEDS TO ENTER FAIRGROUNDS FROM GATE 2 ON WINKLER ROAD

Steer Show Starts Following Feeder Calf Show

Chairman - Martin Hayden

Must be on grounds by 5:00 P.M.

CROSSBRED AND PUREBRED

Judging on the Danish System. Each animal that exhibits receives **\$5.00** minimum.

Open to youth 9 – 19.

- 550 Steer - weighing 900 pounds and under
- 551 Steer - weighing 901 pounds and over
- 552 Grand Champion - \$50.00
- 553 Reserve Grand Champion - \$25.00

PREMIUMS: 1st - \$25.00
2nd - \$20.00
3rd - \$15.00



DAVISS CO. FAIR - PHILPOT, KY

WEDNESDAY, JULY 10 • 7:30 P.M.

Small Arena

ATV 4-WHEEL MUD BOGG

\$20.00 ENTRY FEE

1 Free Gate Admission per ATV

TROPHIES 3 PLACES

Must have 3 in a Class to have a Class



*Money Class - must be entered in a trophy class to be eligible
\$20 entry fee • 100% payback will pay back 1st, 2nd, & 3rd
\$250 added money sponsored by Jay's Lawn Care*

4x4 701 & Up
4x4 501 to 700 cc
4x4 501 to 700 cc
4x4 400 to 500 cc
4x4 400 to 500 cc
4x4 300 to 399 cc
4x4 0 to 299 cc

Any Tires
Mud Tires
Stock Tires
Mud Tires
Stock Tires
Any Tires
Any Tires

2x4 500 & Up
2x4 400 to 499 cc
2x4 300 to 399 cc
2x4 200 to 299 cc
2x4 0 to 199 cc

Any Tires
Any Tires
Any Tires
Any Tires
Any Tires

UTV

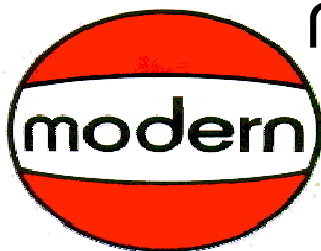
600cc
800cc
1000cc

Any Tires
Any Tires
Any Tires

Sports UTV

600cc
800cc
1000cc

Any Tires
Any Tires
Any Tires



modern welding company
of owensboro, inc.
metal supplies & fabrication
(270) 683-5323

"LET'S GO TO THE FAIR!"

modern supply company
welding supplies
(270) 684-1449



JULY 10-13, 2019

ADMIT ONE



RiverPark EyeCare, PLLC



OPTOMETRISTS

Dr. Robert A. Hamilton
Dr. Michael S. Shields
Dr. Elizabeth Mauzy-Martin

Corder of 3rd and Allen Sts.
221 Allen Street • Owensboro, Kentucky 42303
(270) 685-4966 Fax (270) 686-8058
www.riverparkeyecare.com

JAY'S LAWN CARE

Jay Bell
270-314-5731

jay_h_bell@yahoo.com

Quality Service and Customer Satisfaction Guaranteed
Licensed and Insured

842 Canterbury Road, Owensboro, KY 42303



Here to help you
grow

When it comes to farm equipment, nobody beats our service, selection and support. At Whayne Supply, you'll always find a complete selection of new and used farm machinery for sale in our inventory. Our experienced Ag team of sales representatives will help analyze your needs and identify the right equipment for your specific applications. And our parts and service staff will always be there to back it up.



WHAYNE.COM/AGRICULTURE

YEAH, WE RENT THAT!

Sure, we rent the heavy, earthmoving equipment you need for the first phase of construction. But we don't just stop there. We rent the equipment you need for every phase of the job.

- Backhoes
- Compact Excavators
- Compactors
- Cutoff Saws
- Telescopic Booms
- Skid Steers
- Generators
- Light Plants
- Pumps
- Dozers
- and more!



WHAYNE.COM/RENTAL



KID'S PEDAL TRACTOR



PULL



Free Event

Ages 3-12

SAT. JULY 13, 2019

6:00 P.M.



OPEN YOUTH MARKET SWINE SHOW

THURSDAY, JULY 11, 2019

LIVESTOCK NEEDS TO ENTER FAIRGROUNDS FROM GATE 2 ON WINKLER ROAD

On Grounds Weigh-In: 4:00 p.m.

Scales close at 5:30 p.m.

Showmanship: 6:00 p.m.

Show: 6:15 p.m.

Contact: BRAD EBELHAR 270-570-3553

RULES:

1. A novice market hog class will be available for ages 7 & 8 as of January 1 of the current year.
2. Showmanship – same as sheep
3. All hogs must comply with health regulations found under Livestock Health Requirements for Exhibition in Kentucky.
4. All exhibitors should be prepared to present health papers if requested.
5. Each youth may exhibit four hogs. Novice may exhibit one market hog. Novice will not show for championship or reserve.

MARKET HOG PREMIUMS

1st - \$15.00 2nd - \$10.00 3rd - \$8.00 4th - \$6.00 5th - \$5.00

All exhibitors will receive a \$5.00 premium per exhibitor.

Grand Champion Market Hog \$50.00

Reserve Champion Market Hog \$25.00

Class No.:

420 Novice Market Hogs

425 Market Hogs

4-H RABBIT SHOW

FRIDAY, JULY 12, 2019

6:30 p.m.

4H/FFA Livestock Area

Rabbits will be shown by sex in pure bred and mixed breed classes. Classes will be determined by entries on day of show.

Open to all youth ages 9 - 19 • Cloverbuds ages 5-8

Cloverbuds are not eligible to show for Best in Show or Reserve Best

Youth are limited to 4 rabbits each • Cloverbuds are limited to 2 rabbits each

PREMIUMS

Breed Classes:	1st: \$5.00	2nd: \$4.00	3rd: \$3.00	4th: \$2.00
Best of Show:	\$20.00	Reserve Best:	\$15.00	

4-H POULTRY SHOW

FRIDAY, JULY 12, 2019

7:00 p.m. • 4H/FFA Livestock Area

4-H Jr. Chairman: Sarah Berry and Cameron Casey

Entries Chair: Ellen Berry • Contact Angie Padgett: 270-685-8480

Open to all youth ages 9 - 19 • Cloverbuds ages 5-8

Limited to 2 per class per exhibitor Total of 6 birds per exhibitor

Classes include: chickens, ducks, turkeys, geese, pigeons, etc

Cloverbud division: no cash prizes.

Exhibitors must provide their own cages. Poultry must be caged!

Sick or injured birds will not be accepted. KDA May be on-site to test birds.

PREMIUMS

Breed Classes:	1st, \$5.00	2nd, \$4.00	3rd, \$3.00,	4th, \$2.00
Best in Show:	\$20.00			
Showmanship:	Novice Trophy	Junior Trophy	Senior Trophy	

Birds must be in free standing cages

DON MOORE IS YOUR TRUCK STORE

Get Your Moore Value Price at MooreDeals.com



MOORE

1919 100-YEAR ANNIVERSARY 2019

OWENSBORO | HARTFORD



RAM TOYOTA

GMC

Jeep



BUICK HYUNDAI





CONTACT US

*7549 ICELAND RD
MACEO, KY 42355*

NICK LITHERLAND

*Nick.Litherland@CastlenSteel.com
270-264-2734, ext. 401
270-702-5101 Cell*

KYLE POWERS

*Kyle.Powers@CastlenSteel.com
270-264-2734, ext. 403*



CASTLEN



CASTLEN

www.CastlenSteel.com

STEEL SALES AND PROCESSING



G.C.P.A

$\frac{1}{4}$ Scale Tractors & Mini Rod Pull

JULY 13, 2019 • 5 p.m.

CLASSES:

- 8hp Kids (under 13 years old)
- 12hp Kids (under 13 years old)
 - 12hp Stock
 - 12hp Open
- Stock Altered
- Stock Twin
- Open Twin
 - 750cc
 - 1150cc
- Light Outlaw
- Heavy Outlaw

***Additional classes will be added with a minimum of 3 tractors.**

For Additional Information please contact

Scott Kuegel (270) 903-0801

or

Dustin Burnett (270) 287-2708

(between 5pm-8pm ONLY)

RESIDENTIAL | COMMERCIAL | AGRICULTURAL



MILES L.P. GAS, INC.



- ▶ Miles LP Gas
- ▶ {866} 427-5469
- ▶ www.milespgas.com

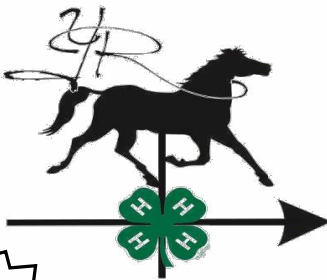


LASER TAG NIGHTLY!



**FREE with
Paid
Admission
to Fair**

**SPONSORED BY:
Mid America Grain Solutions**



***Concessions
Available***

**Daviess County Fair
Open Fun Show!
Sponsored by HARC!
Supporting the 4-H Young Riders
July 20, 2019**

***50/50
Raffle***

**Show Starts at 6 pm
(Gate Opens at 4 pm)
Gate Fee \$2 per Car or Donations
Class Entry \$3, All Breeds Welcome**

- | | |
|--|---------------------------------|
| 1. Showmanship | 11. Hunter Jumper |
| 2. Lead Line | 12. Egg and Spoon |
| 3. Special Needs Assisted/Saddlebred/TBA | 13. Toilet Paper Race |
| 4. Stick Horse | 14. Potato Race |
| 5. Special Needs Unassisted/Saddlebred/TBA | 15. Pantyhose Race |
| 6. Balloon | 16. Arena Race |
| 7. Cake/Soda Walk | 17. Pee Wee Barrel (12 & under) |
| 8. Country Pleasure | 18. Barrels (open) |
| 9. Western Pleasure | 19. Pee Wee Pole (12 and under) |
| 10. Walk Trot | 20. Open Poles |

**Call Before
You Haul**

Daviess County 4H Young Riders is a Notfor-Profit Entity
All proceeds will benefit the Daviess County Young Riders, Thanks to the HARC Sponsorship
All 4-H Members are required to wear helmets
Must show current Coggins & Health Cert. for each equine animal on property
Please No Dogs!

**For More Information Call:
Chris Wurth at 270-316-3326**

Under KY Law, a farm animal activity sponsor, farm animal professional or other person does not have the duty to eliminate all risks of injury of participation in farm animal activities. There are inherent risks that you voluntarily accept if you participate in farm animal activities.

Use main Entrance of Fairgrounds by Norman McDonalds Restaurant
No Alcohol Allowed on Premises

**All Baked Goods
for Cake Walk
are welcome!**



trophy house

511 Frederica Street • Owensboro, KY 42301

NICK CLEMENS

270-684-2305

1-800-468-2305

E-mail: nick@trophyhouseusa.com

www.trophyhouseusa.com

KENTUCKY PRIDE HAY FUTURITY

Clint Hardy - Tyler Miller

To promote the alternate farm income of quality hay production, the Daviess County Lions Club and the Daviess County Extension Service are cooperating with the Kentucky Department of Agriculture's Hay Marketing Program.

All entries must be rectangular machine field baled and cured alfalfa, alfalfa grass, grass and legumes or timothy hay weighing 45 pounds or more per bale. Kentucky produced hay only.

All entries will have a nutritional analysis made by the Kentucky Department of Agriculture prior to naming the winner. All entrants will be notified when analysis results, premium money and ribbons are available at the extension office.

Entries are due Tuesday, July 9 at the Exhibit Building between 4 p.m. to 6 p.m. and may be picked up Sunday, July 14, from 2 p.m. to 4 p.m.

PREMIUMS FOR EACH CLASS

Class Number	Type Hay	1st	2nd	3rd
A	Alfalfa	\$20.00	\$17.00	\$15.00
B	Alfalfa-grass	\$20.00	\$17.00	\$15.00
C	Grass and Legume	\$15.00	\$12.00	\$10.00
D	Timothy	\$15.00	\$12.00	\$10.00

FFA ENTRIES

PREMIUM MONEY - CROP

- 1000 2004 Yellow Corn - 8 Ears
- 1001 2004 White Corn - 8 Ears
- 1002 2005 Yellow Corn - 8 Ears
- 1003 2005 White Corn - 8 Ears
- 1004 Soybean Plant - Whole Plant
- 1005 Soybeans - Beans 1 Gallon
- 1006 Wheat - Grain 1 Gallon
- Hay - 1/2 Bale
- 1007 Mixed Legume and Grass
- 1008 Alfalfa
- 1009 Grass

HORTICULTURE

- 1040 House Plant
- 1041 Hanging Plant
- 1042 Dried Flowers
- 1043 Silk Flowers
- 1044 Fresh Flowers
- 1045 Terrarium
- 1046 Dish Garden

- 1047 Landscape Design
- 1048 Vegetable Display
- 1049 Banana Peppers
- 1050 Green Bell Peppers
- 1051 Specialty Bell Peppers
- 1052 Hot Peppers
- 1053 Cantaloupe
- 1054 Cucumbers
- 1055 Cabbage
- 1056 Free Stone Peaches
- 1057 Cling Peaches
- 1059 White Peaches
- 1060 White Potatoes
- 1061 Red Potatoes
- 1062 Yellow Potatoes
- 1063 Green Beans
- 1064 Lime Beans
- 1065 White Sweet Corn
- 1066 Yellow Sweet Corn
- 1067 Bi Color Sweet Corn
- 1068 Leaf Lettuce

- 1069 Head Lettuce
- 1070 Okra
- 1071 Pumpkin
- 1072 Sunflower
- 1073 Yellow Squash
- 1074 Red Tomatoes
- 1075 Yellow Tomatoes
- 1076 Cherry Tomatoes
- 1077 Zucchini Squash
- 1078 Most Unusual Vegetable

TOBACCO

- 1079 Burley - 1 Stick - 4-6 Plants
- 1080 Dark - 1 Stock - 4-6 Plants

FARM SHOP

- 1081 All Wood Construction
- 1082 All Metal Construction
- 1083 Both Metal and Wood



Preliminary Talent Show

**** OPEN TO ALL COUNTIES** SATURDAY, JULY 13, 2019 • Bittel Hall, Philpot, KY**

ENTRY FEE: \$20.00

Age Groups

Registration

Talent Show

6-12 Years Old
13-21 Years Old

5:30
6:30

6:00
7:00

**1st - \$100⁰⁰ • 2nd - \$50⁰⁰
3rd - \$25⁰⁰**

(The top 3 scores out of the 13 and up will advance to state)

There will be a 1st, 2nd and 3rd place winner in each age group.


Applications available at: Daymar College
Contact LaTasha Shemwell at: (270) 297-9519

MAIL APPLICATION WITH FEE TO:
3808 Placid Place West
Owensboro, KY 42301

Sponsored by
**Daviess County
Farm Bureau**

Make Check or Money Order to: Daviess County Lions Club

GATE ADMISSION REQUIRED FOR ENTRY - REGISTERED TALENT PARTICIPANTS FREE

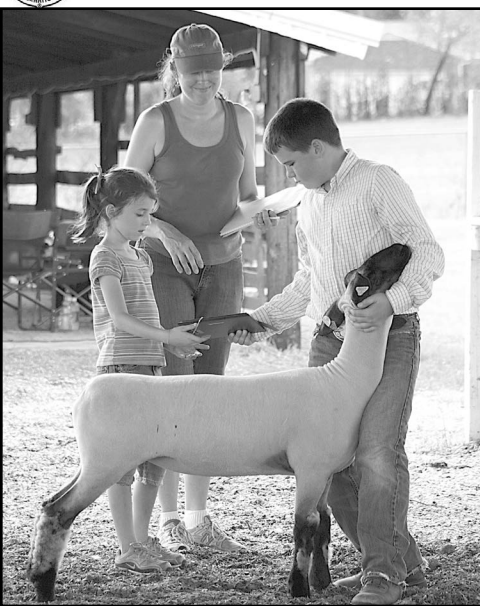


INFLATABLES

NIGHTLY

5PM - CLOSE

SPONSORED BY: HAGAN'S OUTDOOR EQUIPMENT



Junior Market Open Youth Lamb and Goat Show

FRIDAY, JULY 12, 2019

ON GROUND AND WEIGH IN: 4:00 - 6:00 p.m.

Livestock needs to enter Fairgrounds from Gate 2 on Winkler Road

(Ringworm check will be at weigh-in)

Scales will close at 6:00 p.m.

SHOW: 7:00 p.m.

Contact Stacey Potts • 270-685-8480

Chairperson: Michael Baird

RULES

1. Classes will be determined on the day of the show and will include a novice weight class (novice will not show for champion).
2. The show is open to youth 9-19 years of age that are enrolled in a 4H or FFA Market Lamb Project.
3. All exhibitors should be prepared to present health papers if requested.
4. Lambs must be slick shorn for show.
5. Showmanship classes will begin the show and include the following divisions:
Novice 6-8 years old as of **January 1, 2019**, **Junior** 9-13 years old as of **January 1, 2019**, **Senior** 14 years old as of **January 1, 2019**
6. Banners will be presented to the Grand and Reserve Champion lambs and Showmanship winners will receive plaques.
7. All market animals must have identification (KUIP not required) to be eligible to show.
8. The show committee shall rule on any question arising and not covered by other rules.
9. Lambs must be owned and cared for by youth exhibiting animal.
10. The same animal cannot be entered in both the Breeding and Market classes.
11. Exhibitors are limited to four market lambs; novice limited to one.
12. Each exhibitor will receive an exhibitor premium of \$5.

Market Lamb Premium:

1st, \$15.00 2nd, \$10.00 3rd, \$8.00 4th, \$6.00 5th, \$5.00

Class 13004: Grand Champion - \$50.00 + trophy

Class 13005: Reserve Grand Champion - \$25.00 + trophy

JUNIOR MARKET GOAT & COMMERCIAL DOE

1. Goat will show immediately following market lambs.
2. All goats must meet Kentucky Health requirements for exhibition.
3. Exhibitors may enter market wethers, or market does. All wethers must be clean castrated. Does that show in breeding division are not eligible to show in the market division.
4. All market goats must have been born after January 1, 2019.
5. All goats will be shown by weights. All goats must weigh a minimum of 40 lbs. on show day.
6. Breeding does will be shown by age.
7. Showmanship classes will be held following market and breeding classes and include the following divisions: Novice 6-8 years old as of January 1, 2019, Junior 9-13 years old as of January 1, 2019 and Senior 14 years old as of January 1, 2019.
8. Exhibitors are limited to 4 market goats; novice limited to one.
9. Each exhibitor will receive an exhibitor premium of \$5. (Tie breaker will be placing in show)
10. Plaques and trophies will be presented to the Grand and Reserve Champion and Showmanship winners.

13006 Market Goat Premiums

1st: \$15.00, 2nd: \$10.00, 3rd: \$8.00, 4th: \$6.00, 5th: \$5.00

Grand Champion \$50.00 + trophy

Reserve \$25.00 + trophy

13007 Commercial Doe Premiums

1st: \$15.00, 2nd: \$10.00, 3rd: \$8.00, 4th: \$6.00, 5th: \$5.00

Grand Champion \$35.00

Reserve \$20.00

Dairy Doe Champion: \$20.00

Supreme Doe: \$35.00



OWENSBORO, KY

Daviess Co. Fairgrounds

Fri-Sat July 12-13, 2019 - 7 PM



As Seen On
NBC Sports

U.S. Lube

RIVER CITY
TRUCK PARTS

Fast 900
rptr

BUBBA
burger

PIPM
Performance Products

ERSON
CAMS

WORLD
PRODUCTS

LIQUITUBE

Frank's America's
BLACK GOLD
KENTUCKY MOONSHINE

TRUCK ADDONS
A WORLD OF TRUCK AND AUTO CARE

Pit Passes \$20

FEATURED CLASSES

Light Limited Super Stock Tractors

Pro Street Diesel Trucks (2.6)

Work Stock Diesel Trucks (2.5)

Super Stock 2WD Trucks

Pro Farm Tractors

Outlaw Super Stock Tractors

Hot Farm Tractors



WWW.BLUEGRASSPULLING.COM

Sponsored by Western KY Minerals & Vortex Air

KURTZ

AUCTION & REALTY®

kurtzauction.com
270-926-8553

KSE

Ken Shourds Equipment

■ 4606 N CR 100 E
Rockport, IN 47635
(812)649-2821
kse@kenshourdsequipment.com
it *kenshourdsequipment.com*



America's **FOOD** *Favorites*

Stop by for
Ice Cream
After the Fair!

4527 Hwy. 54
Owensboro, KY 42303

270-852-8887

INDEX TO ADVERTISERS

54 Pizza Express	30
A & G Garden Center	30
Adam Jackson Excavating	38
Aflac	74
Alex Bryant	38
Alexander & Company CPAS PSC	29
Autry's Portable Toilets & Septic Tank Service	13
Beef 'O Brady	74
Big Dipper	15
Bill's Restaurant	75
Blue Moon	22
Bowen Tire	86
Builders Discount Lumber	11
Castlen Steel	94
C. G. Williams, Inc.	15
Daviess County Farm Bureau	23
DCHS Archery	51
DMC Graphics	4
Don Moore	93
Dr. Meagan Aull	71
Elder Pipe & Supply Co., Inc.	33
Electrical Equipment Repair, Inc.	25
Envision	65
Erb Equipment Company	64
Family Wellness Center	22
Farm Credit - Mid America	37
Fischer's Keystop	75
Gail Niehaus • Century 21	34
Glenmore Distillery	34
Glenn Funeral Home	85
GN Excavating	14
Gordon's True Value Hardware	13
Hagan's Outdoor Equipment	82
Hayden Construction Co., Inc.	Inside Back Cover
Hayden Electric, Inc.	53
Hilliard Lyons	36
Hines Center	72
Howard's Body Shop, Inc.	33
Independance Bank	68
James H. Davis Funeral Home	Back Cover
Jay's Lawn Care	90
Kelcas	16
Kellems	16
Kelly Rae's Country Cafe	71

Ken Shourd's Equipment	102
Kentucky State Fair	4
Kurtz Auction & Realty	102
Mid America Grain Solutions	21
Mils Dairy Drive-In	29
Miles Enterprises	75
Miles LP	96
Miles Transportation	20
Modern Supply	89
Morris Post Frame	39
Murphy's Appliance & Electronics Company	17
Norman McDonald's Country Drive-In	70
O'Bryan Contracting	20
Office Equipment Company	30
Ohio Valley 2 Way Radio	13
Old Hickory Pit Bar-B-Q	16
Ole South Bar-B-Q	24
Owensboro Archery Club	15
Owensboro Family Eye Care Center	86
Owensboro Health Regional Hospital	Inside Front Cover
O.Z. Tyler	71
R.C. Bratcher	31
Republic Services, Inc.	70
Rick's Tire & Service	51
Ritzzy's	102
Riverpark Eye Care	90
Rural King	35
Schrecker	87
South Central Bank	35
Southern States	84
Steve Jones Chrysler Dodge Jeep	67
Storm's Trophies	74
Swedish Match	70
Tapp Motor's	72
Tony's Carts & Parts	27
Trophy House	98
Vortex Air	54
Ward Family Dentistry, PSC	35
Western Kentucky Minerals	12
Western Kentucky Regional Blood Center	25
Wayne Supply	90
Wilkerson Plastering & Acoustics, Inc.	52
Wright Implement	81



Carnival FREE With Paid Admission to Fair!

GATES OPEN AT 5:00 P.M.

ADMISSION:

Wednesday/Thursday

Adults: \$10.00 • Children 3-12, \$8.00

Friday/Saturday

Adults: \$12.00 • Children 3-12, \$10.00

Children Under 3 FREE

Sponsored by:

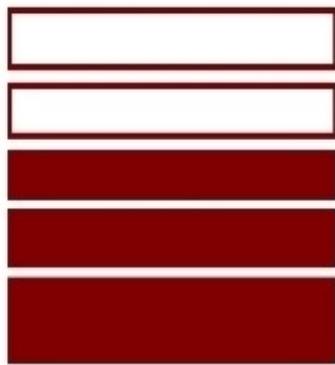


**Owensboro
Health**





HAYDEN



CONSTRUCTION CO., INC.

Owensboro, KY

270-683-3057



Names You Trust. People Who Care.

We are honored that so many citizens of our community trust us to care for their families in times of need. Thank you.



Billy Boyle, III
*President, Funeral Director
& Embalmer*



John Hill
*Vice President, Funeral Director
& Embalmer*



Mike Cecil
*Funeral Director
& Embalmer*



3009 Frederica Street • Owensboro
(270) 683-5377



10153 Kentucky 54 • Whitesville
(270) 233-4437

davisfuneralhome.com • cecilfuneralhome.com